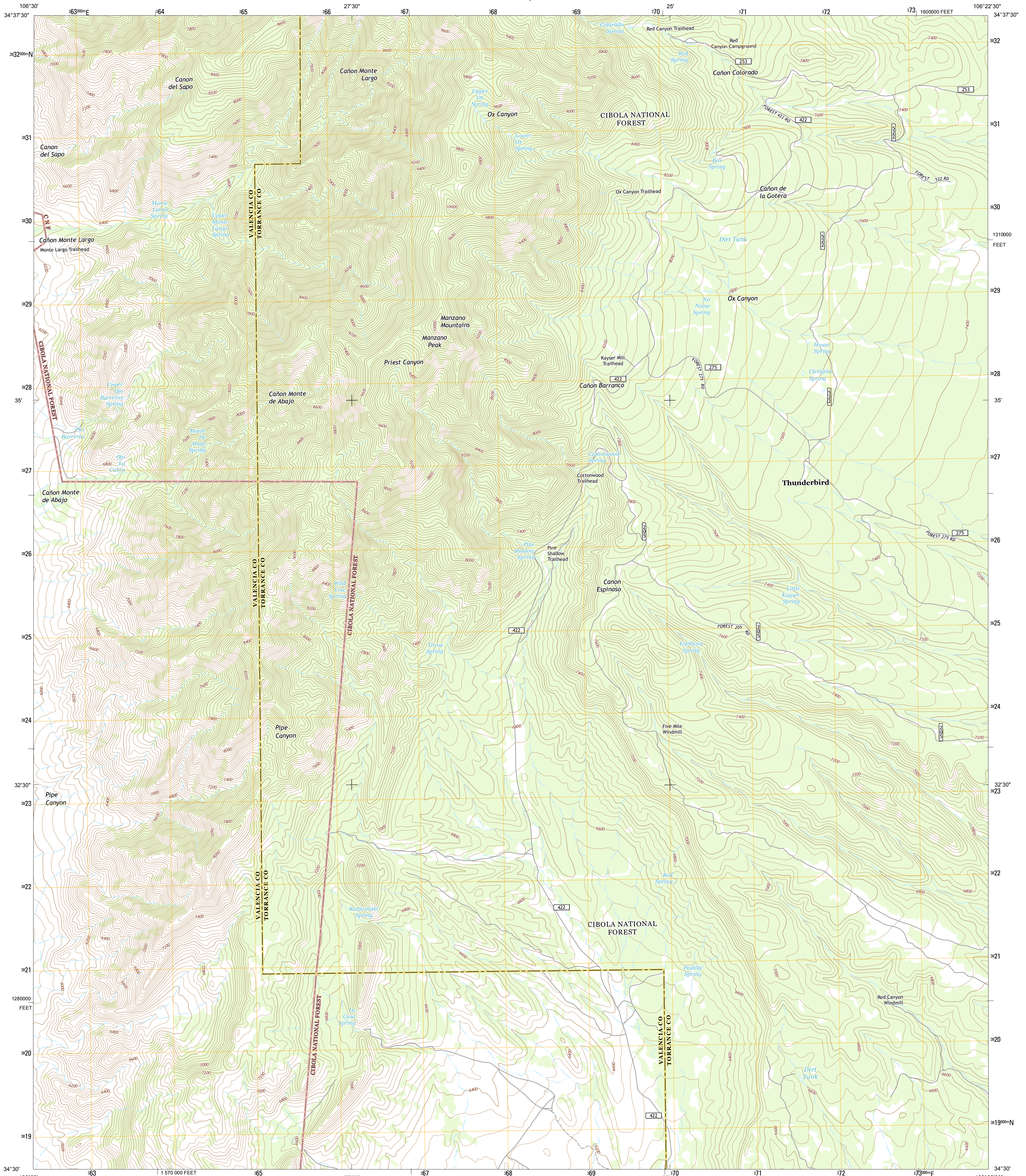




U.S. DEPARTMENT OF THE INTERIOR
U. S. GEOLOGICAL SURVEY



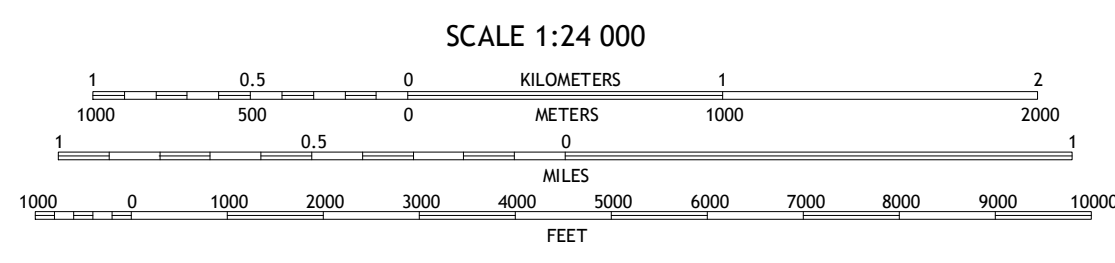
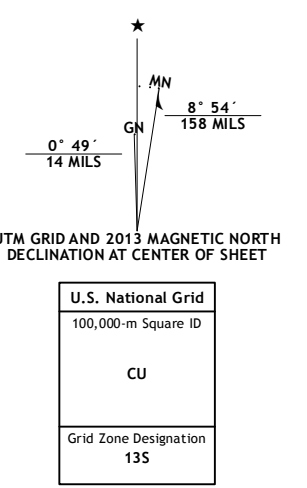
MANZANO PEAK QUADRANGLE
NEW MEXICO
7.5-MINUTE SERIES



Produced by the United States Geological Survey
North American Datum of 1983 (NAD83)
World Geodetic System of 1984 (WGS84) Projection and
1 000-meter grid: Universal Transverse Mercator, Zone 13S
10 000-foot ticks: New Mexico Coordinate System of 1983
(central zone)

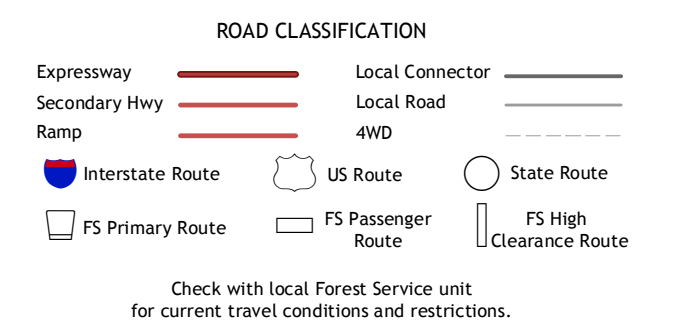
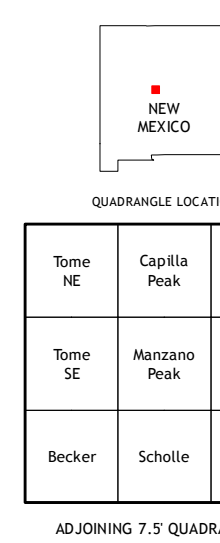
This map is not a legal document. Boundaries may be
generalized for this map scale. Private lands within government
reservations may not be shown. Obtain permission before
entering private lands.

Imagery.....N.A.P. May 2011
Roads.....©2006-2013 TomTom
Roads within US Forest Service Lands.....FS Topo Data
with limited Forest Service updates, 2013
Names.....National Hydrography Dataset, 2013
Hydrography.....National Hydrography Dataset, 2011
Contours.....National Elevation Dataset, 1999
Boundaries.....Census, IBWC, IBC, USGS, 1972 - 2012
Public Land Survey System.....BLM, 2011



CONTOUR INTERVAL 40 FEET
NORTH AMERICAN VERTICAL DATUM OF 1988

This map was produced to conform with the
National Geospatial Program US Topo Product Standard, 2011.
A metadata file associated with this product is draft version 0.6.15



MANZANO PEAK, NM
2013

ADJOINING 7.5 QUADRANGLES

