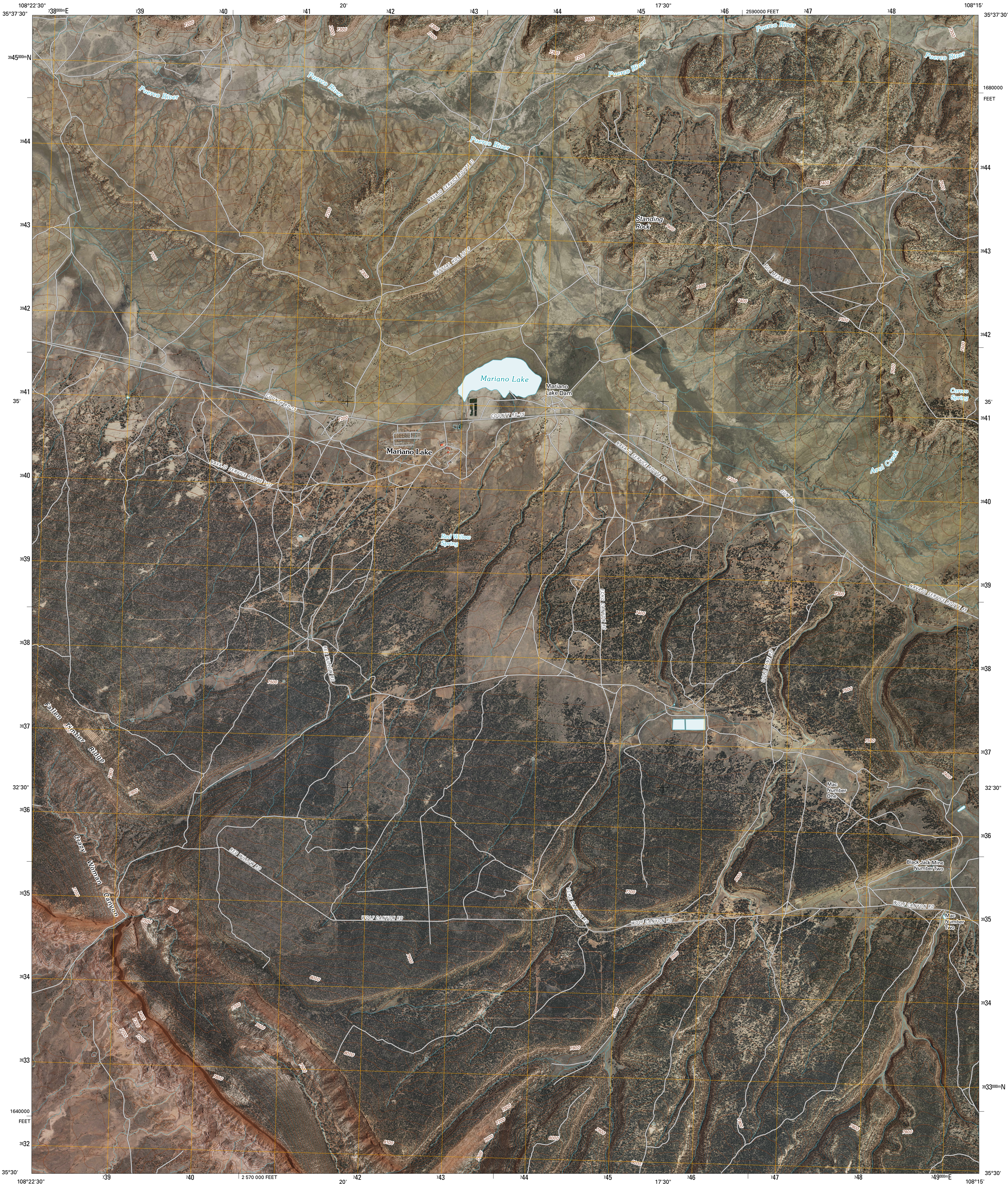




U.S. DEPARTMENT OF THE INTERIOR
U. S. GEOLOGICAL SURVEY



MARIANO LAKE QUADRANGLE
NEW MEXICO
7.5-MINUTE SERIES



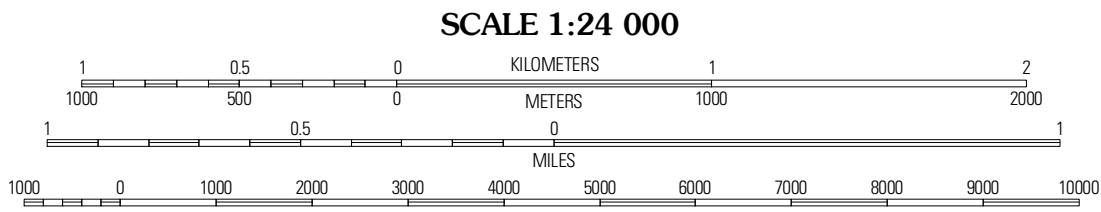
Produced by the United States Geological Survey
North American Datum of 1983 (NAD83)
World Geodetic System of 1984 (WGS84), Projection and
1 000-meter grid; Universal Transverse Mercator, Zone 12S
10 000-foot ticks; New Mexico Coordinate System of 1983
(west zone)

Imagery.....NAIP, January 2005 - May 2009
Roads.....G2006-2010 Tele Atlas
Names.....GNIS, 2008
Hydrography.....National Hydrography Dataset, 2005
Contours.....National Elevation Dataset, 1999

UTM GRID AND 2011 MAGNETIC NORTH
DECLINATION AT CENTER OF SHEET

MN
GN
1° 24' 7" N
180 MILS

U.S. National Grid
100,000-m Square ID
YE
Grid Zone Designation
12S



CONTOUR INTERVAL 20 FEET
NORTH AMERICAN VERTICAL DATUM OF 1988

This map was produced to conform with version 0.5.10 of the
draft USGS Standards for 7.5-Minute Quadrangle Maps.
A metadata file associated with this product is draft version 0.5.11



QUADRANGLE LOCATION			
Oak Spring	Dillon Pass	Crownpoint	
Pinedale	Mariano Lake	Horta Butte	
Ciniza	Continental Divide	Thoreau	

ADJOINING 7.5' QUADRANGLES

ROAD CLASSIFICATION			
Interstate Route	US Route	State Route	Local Road
Ramp		4WD	

MARIANO LAKE, NM
2010