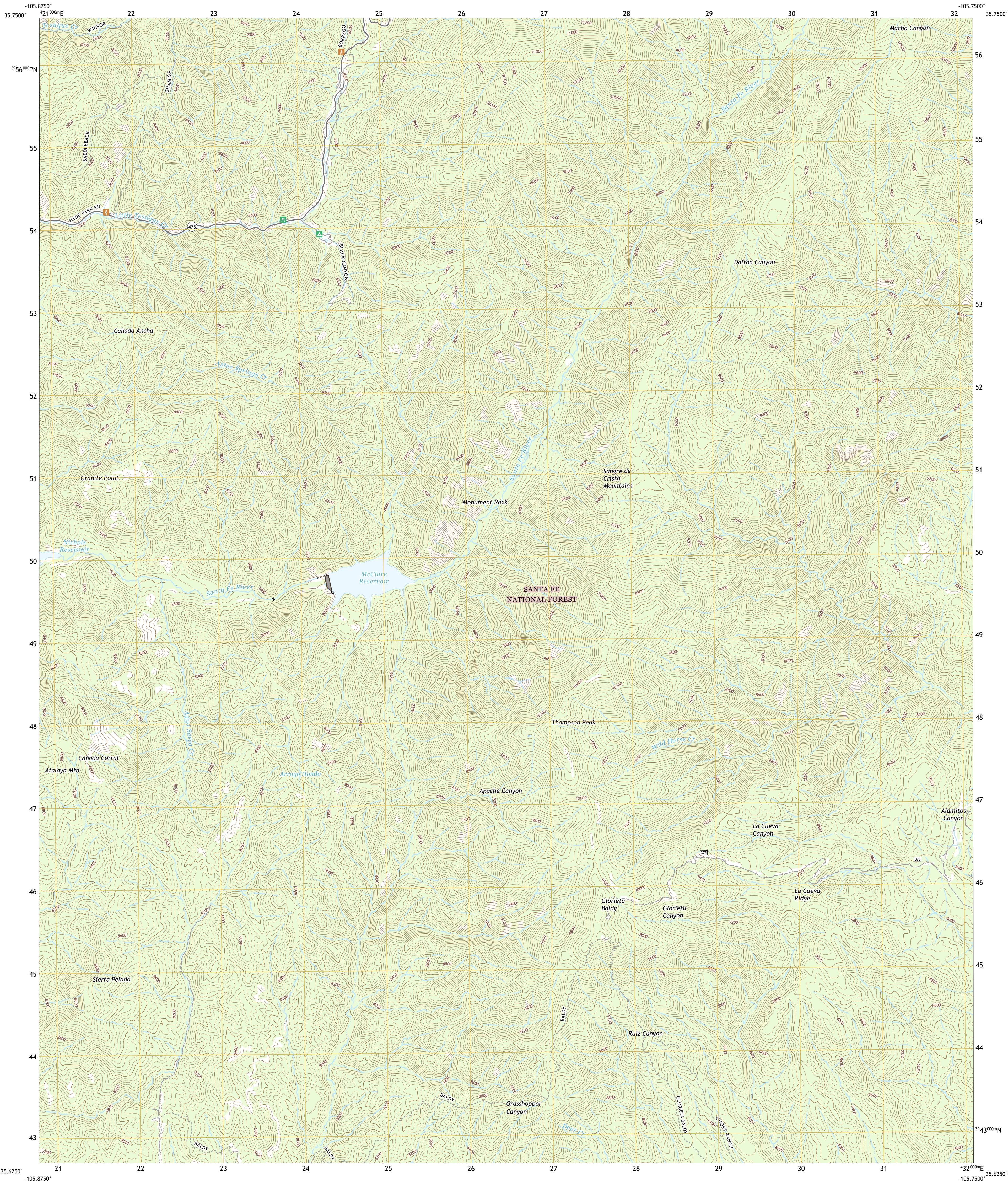




U.S. DEPARTMENT OF THE INTERIOR  
U.S. GEOLOGICAL SURVEY

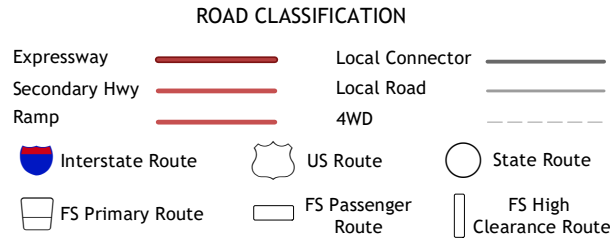
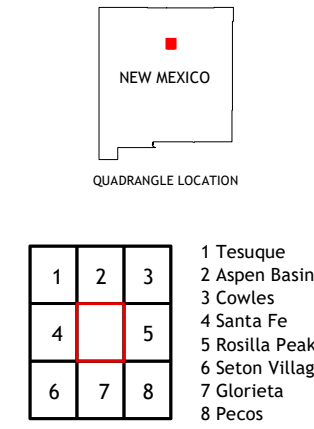
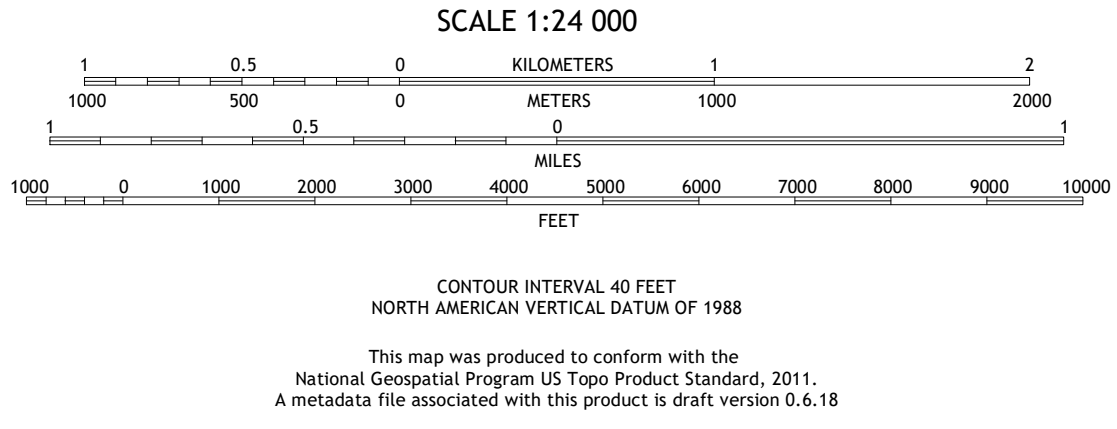
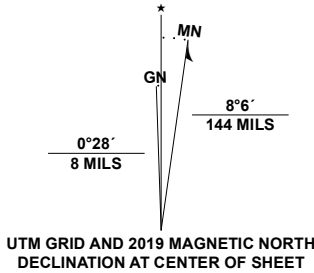


MCCLURE RESERVOIR QUADRANGLE  
NEW MEXICO - SANTA FE COUNTY  
7.5-MINUTE SERIES



Produced by the United States Geological Survey  
North American Datum of 1983 (NAD83)  
World Geodetic System of 1984 (WGS84). Projection and  
1 000-meter grid: Universal Transverse Mercator, Zone 13S  
This map is not a legal document. Boundaries may be  
generalized for this map scale. Private lands within government  
reservations may not be shown. Obtain permission before  
entering private lands.

Imagery.....NAIP, June 2016 - August 2016  
Roads.....U.S. Census Bureau, Not Available  
Roads within US Forest Service Lands.....FS Topo Data  
with limited Forest Service updates, 2013  
Names.....GNIS, 1980 - 2018  
Hydrography.....National Hydrography Dataset, 2004 - 2018  
Contours.....National Elevation Dataset, 2017 - 2018  
Boundaries.....Multiple sources; see metadata file  
Public Land Survey System.....BLM, 2019  
Wetlands.....FWS National Wetlands Inventory, 2009



Check with local Forest Service unit  
for current travel conditions and restrictions.

**MCCLURE RESERVOIR, NM**  
**2020**

