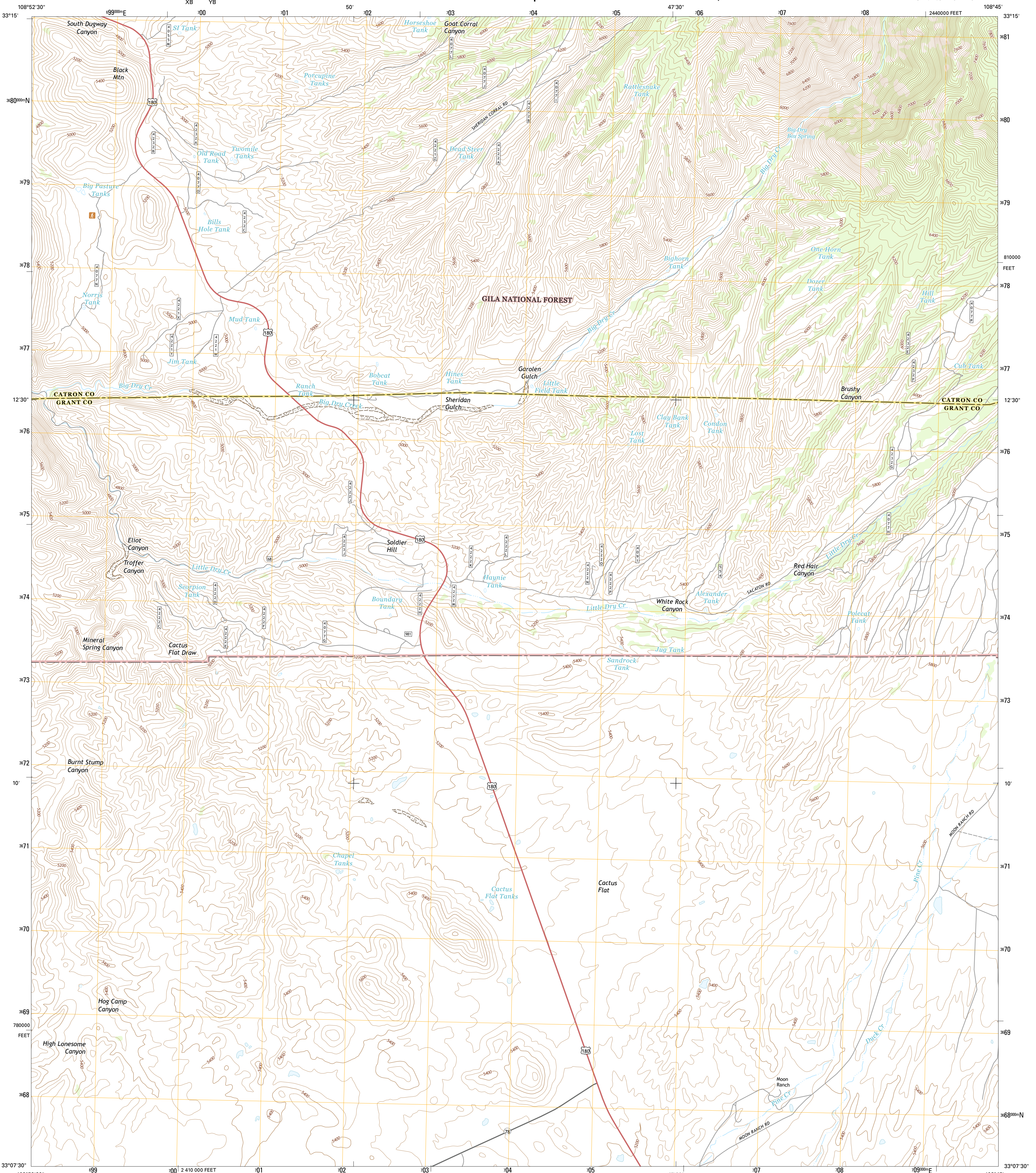




U.S. DEPARTMENT OF THE INTERIOR
U.S. GEOLOGICAL SURVEY



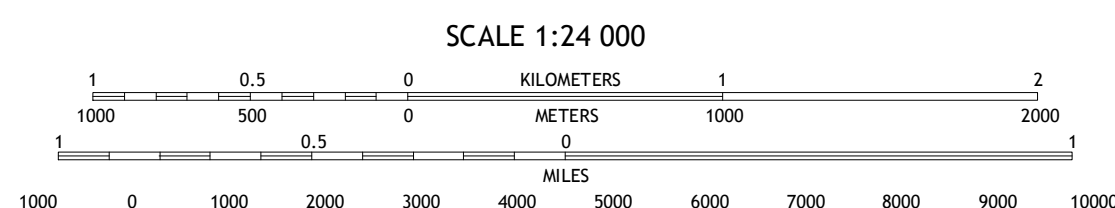
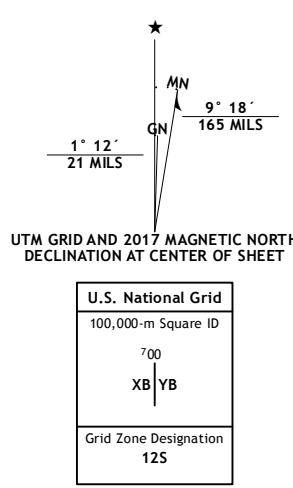
MOON RANCH QUADRANGLE
NEW MEXICO
7.5-MINUTE SERIES



Produced by the United States Geological Survey
 North American Datum of 1983 (NAD83)
 World Geodetic System of 1984 (WGS84) Projection and
 1 000-meter grid: Universal Transverse Mercator, Zone 12S
 10 000-foot ticks: New Mexico Coordinate System of 1983 (west zone)

This map is not a legal document. Boundaries may be generalized for this map scale. Private lands within government reservations may not be shown. Obtain permission before entering private lands.

Imagery.....NADP, October 2014
 Roads.....U.S. Census Bureau, 2015 - 2016
 Roads within US Forest Service Lands.....FSTopo Data with limited Forest Service updates, 2012 - 2016
 Names.....National Elevation Dataset, 2001
 Hydrography.....National Hydrography Dataset, 2014
 Contours.....National Elevation Dataset, 2001
 Boundaries.....Multiple sources; see metadata file 1972 - 2016
 Public Land Survey System.....BLM, 2016
 Wetlands.....FWS National Wetlands Inventory 1977 - 2014



CONTOUR INTERVAL 40 FEET
 NORTH AMERICAN VERTICAL DATUM OF 1988

This map was produced to conform with the National Geospatial Program US Topo Product Standard, 2011. A metadata file associated with this product is draft version 0.6.19

ROAD CLASSIFICATION

- Expressway
- Secondary Hwy
- Ramp
- Interstate Route
- FS Primary Route
- Local Connector
- Local Road
- 4WD
- US Route
- FS Passenger Route
- State Route
- FS High Clearance Route

Check with local Forest Service unit for current travel conditions and restrictions.

MOON RANCH, NM
2017

ADJOINING QUADRANGLES

1	2	3
4	5	6
7	8	

- Glenwood
- Holt Mountain
- Grouse Mountain
- Wilson Mountain
- Rice Ranch
- Mule Creek
- Bear Mountain
- Buckhorn

