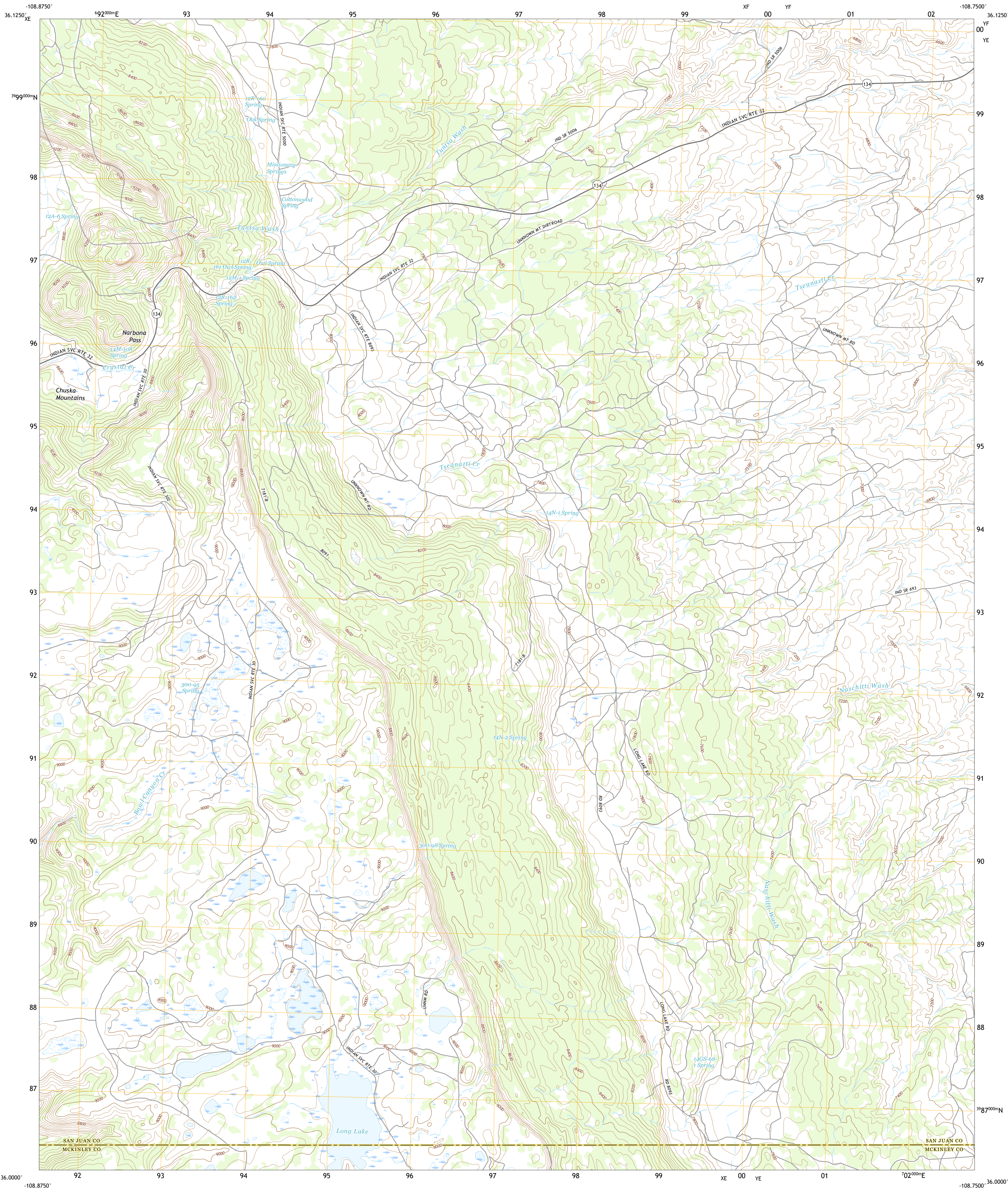




U.S. DEPARTMENT OF THE INTERIOR
U.S. GEOLOGICAL SURVEY



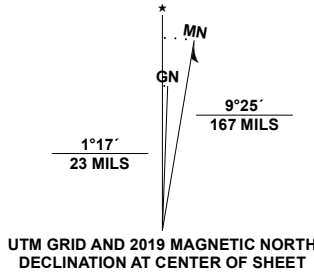
NARBONA PASS QUADRANGLE
NEW MEXICO
7.5-MINUTE SERIES



Produced by the United States Geological Survey

North American Datum of 1983 (NAD83)
World Geodetic System of 1984 (WGS84). Projection and
1 000-meter grid/Universal Transverse Mercator, Zone 12S
This map is not a legal document. Boundaries may be
generalized for this map scale. Private lands within government
reservations may not be shown. Obtain permission before
entering private lands.

Imagery.....NAIP, May 2016 - August 2016
Roads.....U.S. Census Bureau, 2016
Names.....GNIS, 1980-2011
Hydrography.....National Hydrography Dataset, 2002 - 2019
Contours.....National Elevation Dataset, 1999
Boundaries.....Multiple sources: see metadata file, 2017 - 2018
Public Land Survey System.....BLM, 2019
Wetlands.....FWS National Wetlands Inventory 2005 - 2009



U.S. National Grid	
100,000 - m Square ID	
XF	YF
XE	YE
Grid Zone Designation	
12S	



CONTOUR INTERVAL 40 FEET
NORTH AMERICAN VERTICAL DATUM OF 1988
This map was produced to conform with the
National Geospatial Program US Topo Product Standard, 2011.
A metadata file associated with this product is draft version 0.6.18



1	2	3
4	5	
6	7	8

- ADJOINING QUADRANGLES
- 1 Toadlena
 - 2 Two Grey Hills
 - 3 Sheep Springs
 - 4 Crystal
 - 5 Natchit
 - 6 Todito Park
 - 7 Chuska Peak
 - 8 Coyote Canyon NW

ROAD CLASSIFICATION	
Expressway	Local Connector
Secondary Hwy	Local Road
Ramp	4WD
Interstate Route	US Route
	State Route

NARBONA PASS, NM
2020

