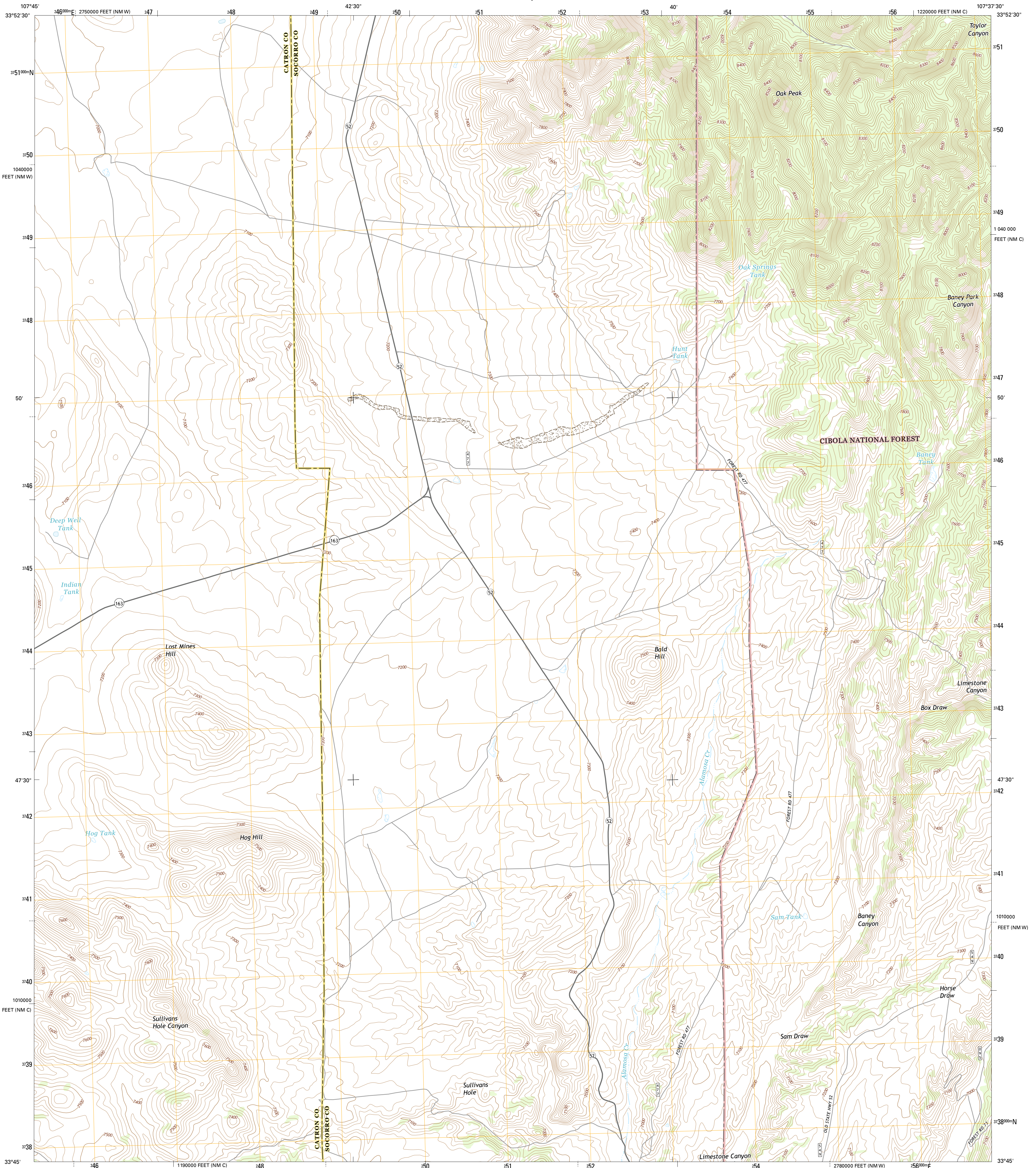




U.S. DEPARTMENT OF THE INTERIOR  
U.S. GEOLOGICAL SURVEY



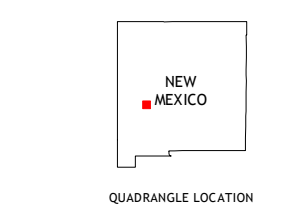
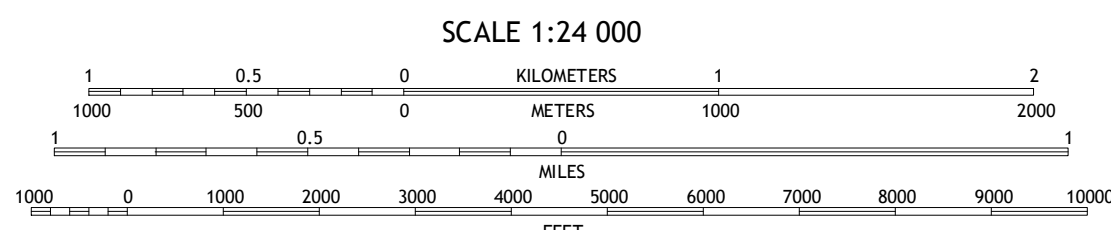
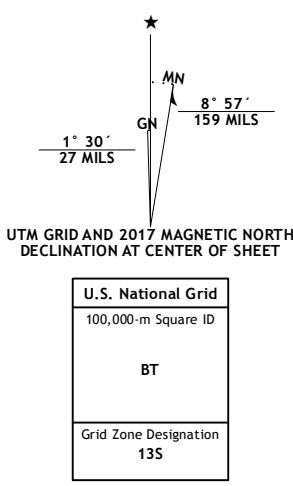
OAK PEAK QUADRANGLE  
NEW MEXICO  
7.5-MINUTE SERIES



Produced by the United States Geological Survey  
North American Datum of 1983 (NAD83)  
World Geodetic System of 1984 (WGS84) Projection and  
1 000-meter grid: Universal Transverse Mercator, Zone 13S  
10 000-foot ticks: New Mexico Coordinate System of 1983  
(central and west zones)

This map is not a legal document. Boundaries may be  
generalized for this map scale. Private lands within government  
reservations may not be shown. Obtain permission before  
entering private lands.

Image: U.S. National Grid, October 2014  
Roads: U.S. Census Bureau, 2015-2016  
Roads within US Forest Service Lands: FSTopo Data  
with limited Forest Service updates, 2012-2016  
Names: GNS, 2016  
Hydrography: National Hydrography Dataset, 2014  
Contours: National Elevation Dataset, 2000  
Boundaries: Multiple sources; see metadata file 1972-2016  
Public Land Survey System: BLM, 2016  
Wetlands: FWS National Wetlands Inventory 1977-2014



ROAD CLASSIFICATION

Expressway  
Secondary Hwy  
Ramp  
Interstate Route  
FS Primary Route

Local Connector  
Local Road  
4WD  
US Route  
FS Passenger Route  
State Route  
FS High Clearance Route

Check with local Forest Service unit  
for current travel conditions and restrictions.

1	2	3
4	5	6
7	8	

ADJOINING QUADRANGLES

1 C-N Lake  
2 Kellog Well  
3 Monica Saddle  
4 Luera Mountains East  
5 Bay Buck Peaks  
6 Paddys Hole  
7 Dusty  
8 Welty Hill

OAK PEAK, NM  
2017

