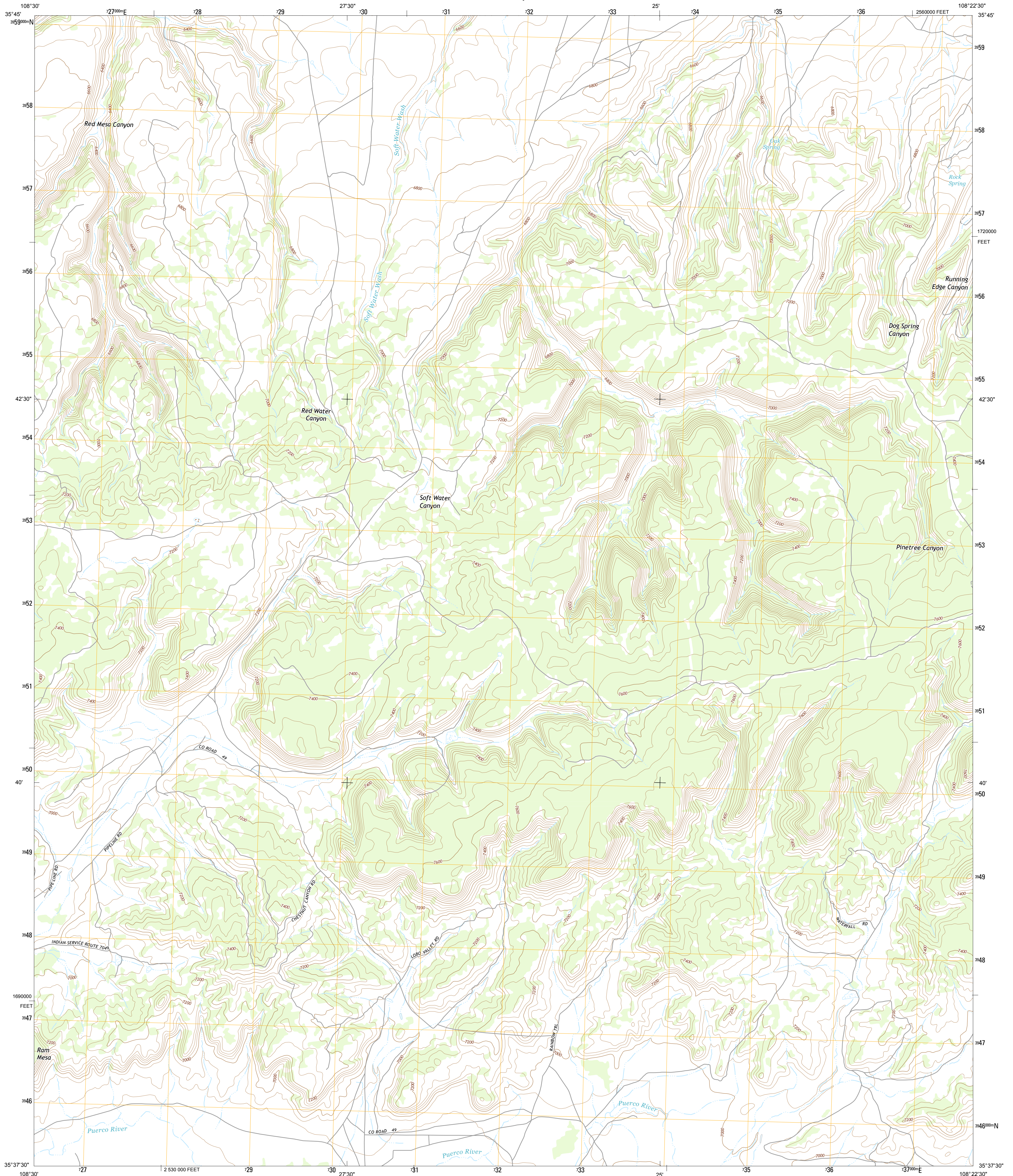




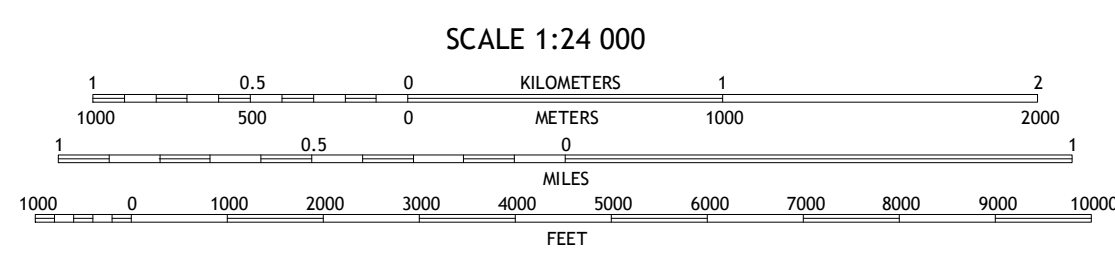
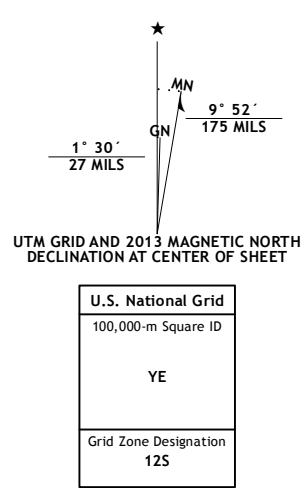
U.S. DEPARTMENT OF THE INTERIOR
U. S. GEOLOGICAL SURVEY



OAK SPRING QUADRANGLE
NEW MEXICO-MCKINLEY CO.
7.5-MINUTE SERIES



Produced by the United States Geological Survey
 North American Datum of 1983 (NAD83)
 World Geodetic System of 1984 (WGS84). Projection and
 1 000-meter grid: Universal Transverse Mercator, Zone 12S
 10 000-foot ticks: New Mexico Coordinate System of 1983 (west
 zone)
 This map is not a legal document. Boundaries may be
 generalized for this map scale. Private lands within government
 reservations may not be shown. Obtain permission before
 entering private lands.
 Imagery.....NAIP, May 2011
 Roads.....©2006-2013 TomTom
 Names.....GNIS, 2013
 Hydrography.....National Hydrography Dataset, 2011
 Contours.....National Elevation Dataset, 1999
 Boundaries.....Census, IBC, USGS, 1972 - 2012
 Public Land Survey System.....BLM, 2011



This map was produced to conform with the
 National Geospatial Program US Topo Product Standard, 2011.
 A metadata file associated with this product is draft version 0.6.15

ROAD CLASSIFICATION

- Expressway
- Secondary Hwy
- Ramp
- Interstate Route
- Local Connector
- Local Road
- 4WD
- US Route
- State Route

QUADRANGLE LOCATION

Coyote Canyon	Toye	Standing Rock
Hard Ground Flats	Oak Spring	Dalton Pass
Church Rock	Pinedale	Mariano Lake

ADJOINING 7.5 QUADRANGLES

OAK SPRING, NM
2013

