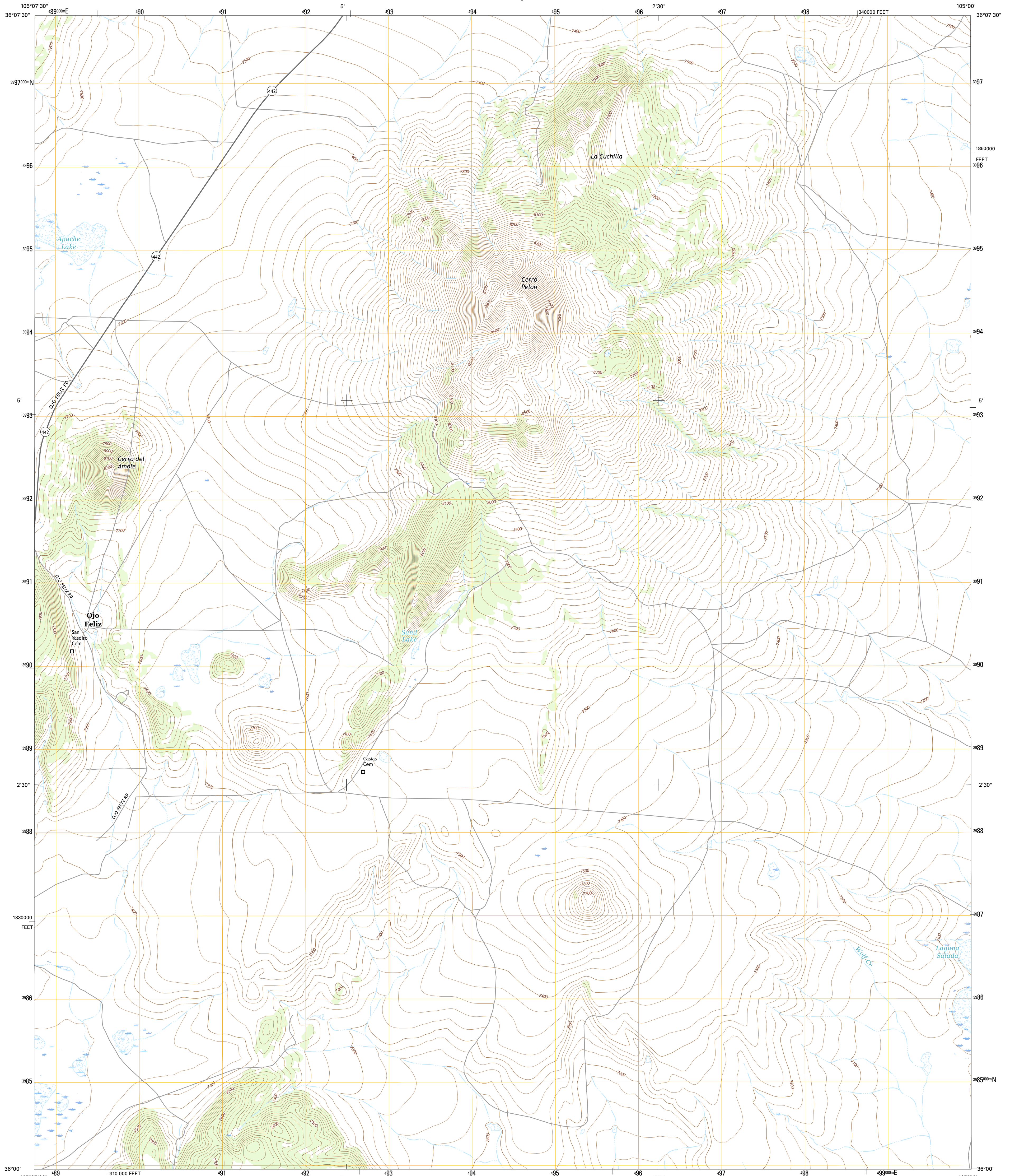




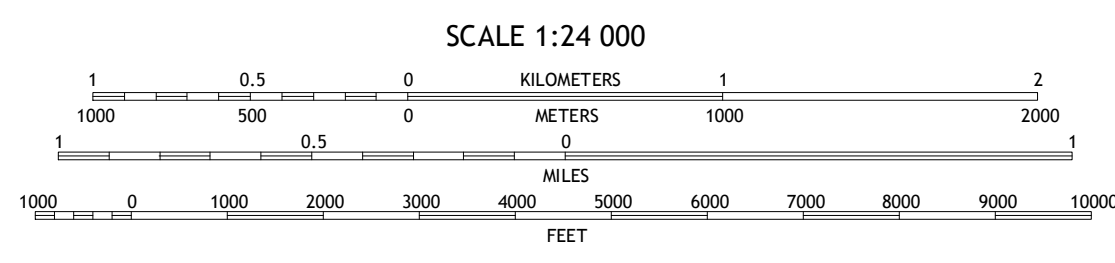
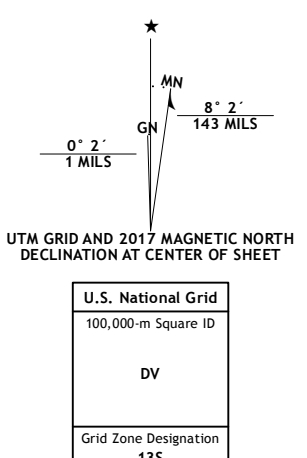
U.S. DEPARTMENT OF THE INTERIOR
U.S. GEOLOGICAL SURVEY



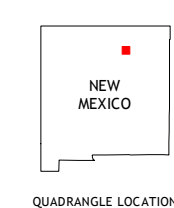
OJO FELIZ QUADRANGLE
NEW MEXICO-MORA CO.
7.5-MINUTE SERIES



Produced by the United States Geological Survey
 North American Datum of 1983 (NAD83)
 World Geodetic System of 1984 (WGS84). Projection and
 1 000-meter grid: Universal Transverse Mercator, Zone 13S
 10 000-foot ticks: New Mexico Coordinate System of 1983 (east
 zone)
 Imagery: NIP, October 2014
 Roads: U.S. Census Bureau, 2015 - 2016
 Names: GNIS, 2016
 Hydrography: National Hydrography Dataset, 2014
 Contours: National Elevation Dataset, 2001
 Boundaries: Multiple sources; see metadata file 1972 - 2016
 Public Land Survey System: BLM, 2016
 Wetlands: FWS National Wetlands Inventory 1977 - 2014



CONTOUR INTERVAL 20 FEET
NORTH AMERICAN VERTICAL DATUM OF 1988
 This map was produced to conform with the
 National Geospatial Program US Topo Product Standard, 2011.
 A metadata file associated with this product is draft version 0.6.19



ROAD CLASSIFICATION

Expressway	Local Connector
Secondary Hwy	Local Road
Ramp	4WD
Interstate Route	US Route
	State Route

ADJOINING QUADRANGLES

1	2	3
4	5	6
7	8	

- 1 Guadalupe
- 2 Ocate
- 3 Mora Ranch
- 4 Lucero
- 5 Cerro Negro
- 6 Rainsville
- 7 Fort Union
- 8 Maxson Crater

OJO FELIZ, NM
2017

