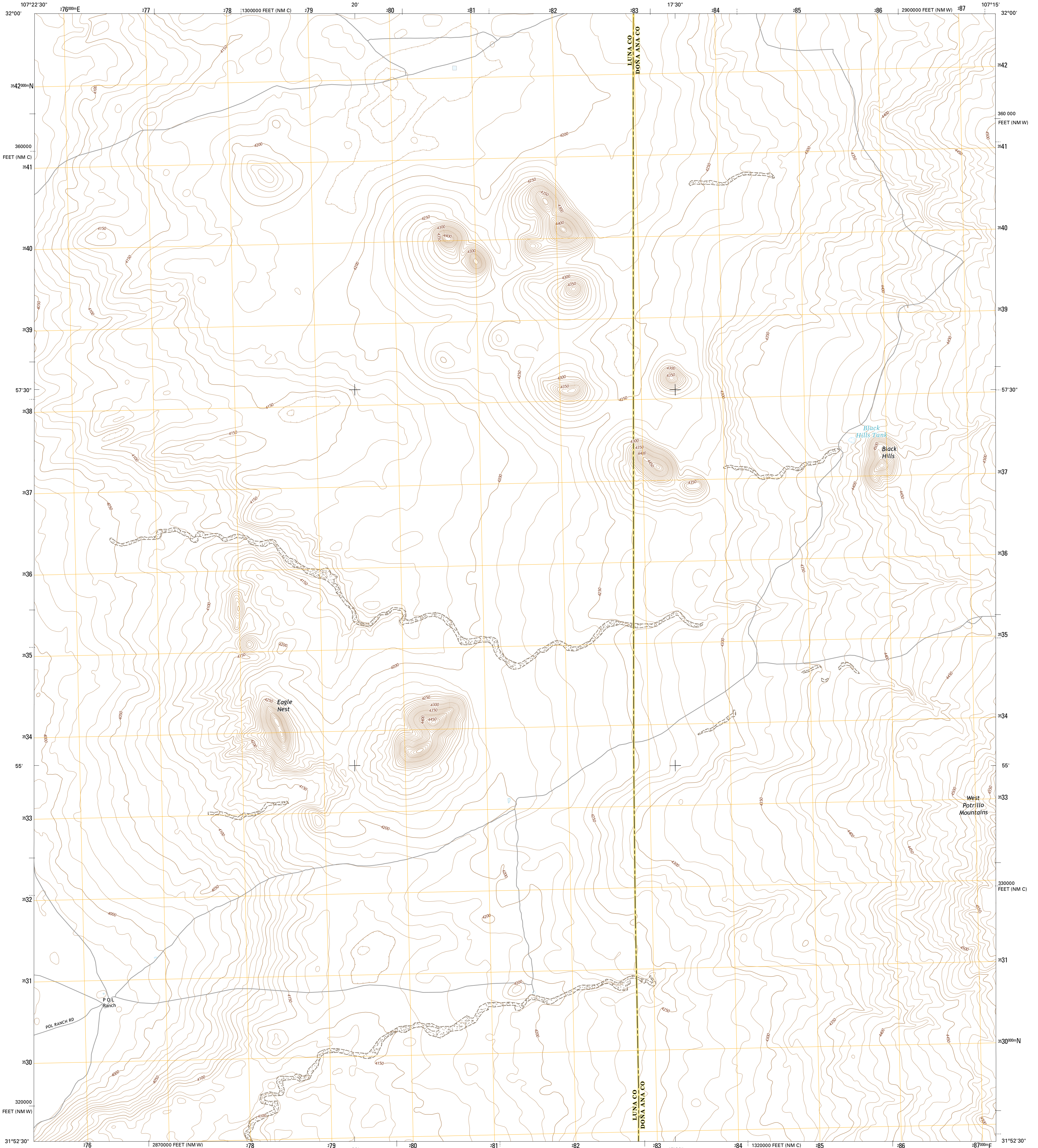




U.S. DEPARTMENT OF THE INTERIOR
U.S. GEOLOGICAL SURVEY



P O L RANCH QUADRANGLE
NEW MEXICO
7.5-MINUTE SERIES

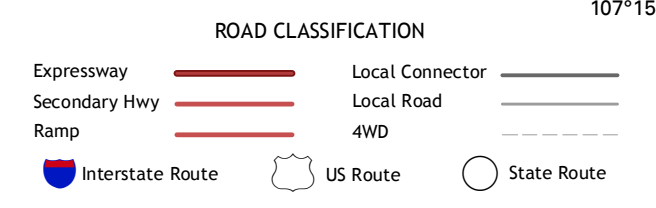
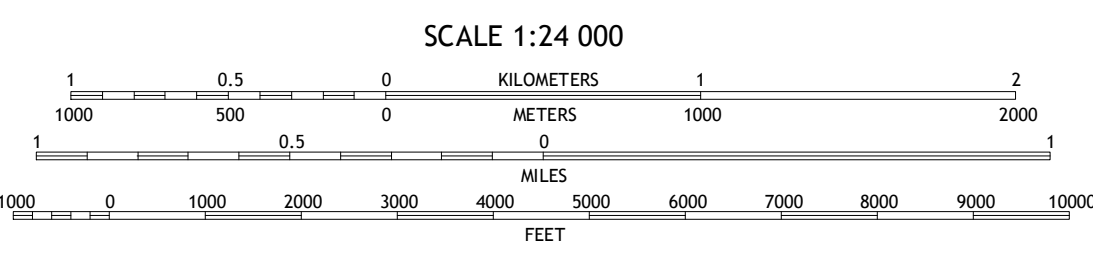
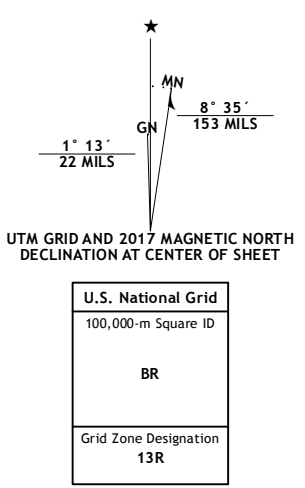


Produced by the United States Geological Survey

North American Datum of 1983 (NAD83)
World Geodetic System of 1984 (WGS84) Projection and
1 000-foot grid: Universal Transverse Mercator, Zone 13R
10 000-foot ticks: New Mexico Coordinate System of 1983 (west
and central zones)

This map is not a legal document. Boundaries may be
generalized for this map scale. Private lands within government
reservations may not be shown. Obtain permission before
entering private lands.

Imagery.....NAP, October 2014
Roads.....U.S. Census Bureau, 2015 - 2016
Names.....GNIS, 2016
Hydrography.....National Hydrography Dataset, 2014
Contours.....National Elevation Dataset, 2001
Boundaries.....Multiple sources; see metadata file 1972 - 2016
Public Land Survey System.....BLM, 2016
Wetlands.....FWS National Wetlands Inventory 1977 - 2014



ADJOINING QUADRANGLES

1	2	3
4	5	6
7	8	

1 Sibley Hole
2 X-7 Ranch
3 Mount Aden SW
4 Mesquite Lake
5 Potrillo Peak
6 Coyote Hill
7 Camel Mountain
8 Guzman Lookout Mountain

P O L RANCH, NM
2017



NSN 7540-01-630-3382
NGA REF NO. U.S.G.S.X.2.4.K.3.3.8.2