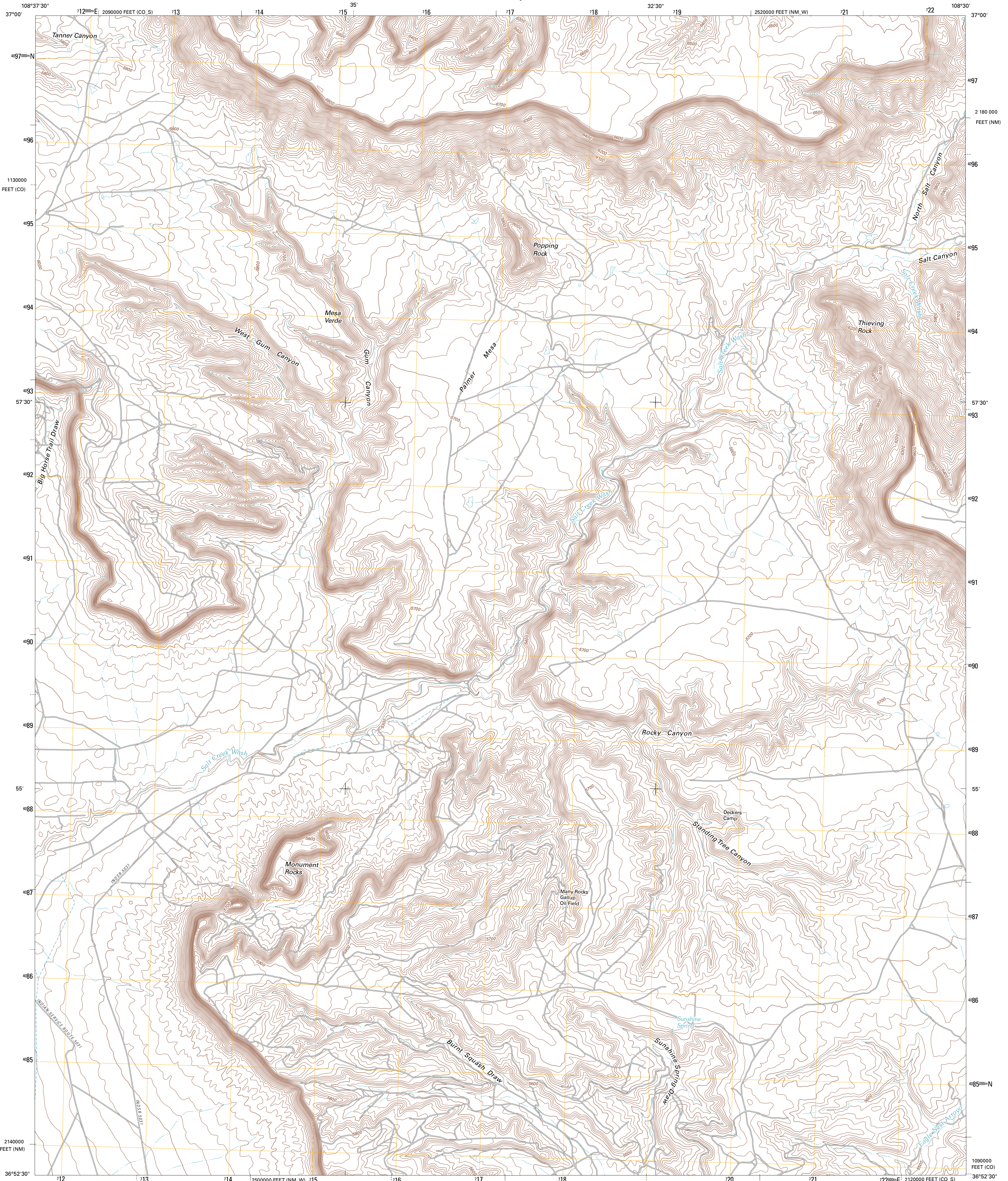




U.S. DEPARTMENT OF THE INTERIOR  
U. S. GEOLOGICAL SURVEY

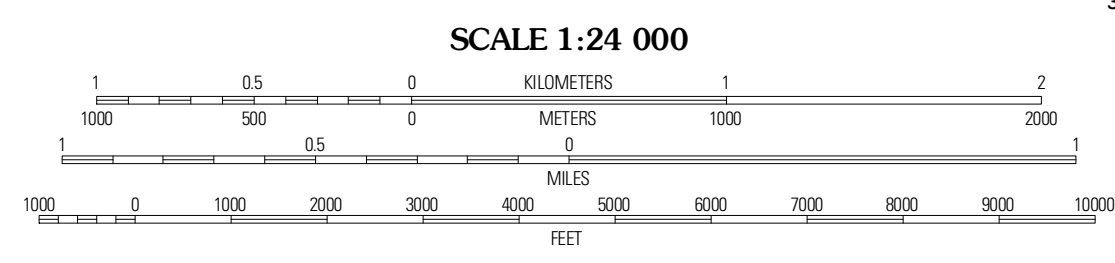
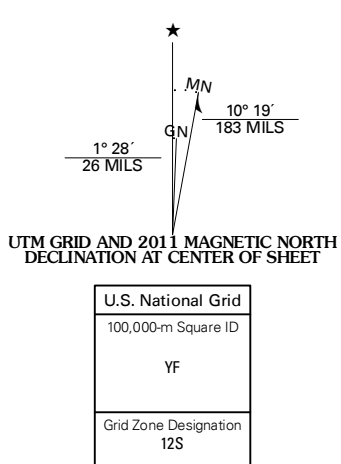


PALMER MESA QUADRANGLE  
NEW MEXICO-COLORADO  
7.5-MINUTE SERIES



Produced by the United States Geological Survey  
North American Datum of 1983 (NAD83)  
World Geodetic System of 1984 (WGS84). Projection and  
1:000-meter grid: Universal Transverse Mercator, Zone 12S  
10 000-foot ticks: New Mexico Coordinate System of 1983  
(west zone), Colorado Coordinate System of 1983 (south  
zone)

Imagery:.....NAP, May 2009  
Roads:.....©2006-2010 Tele Atlas  
Names:.....GNIS, 2010  
Hydrography:.....National Hydrography Dataset, 2009  
Contours:.....National Elevation Dataset, 2001

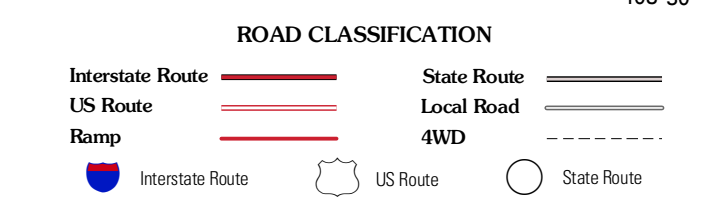


CONTOUR INTERVAL 20 FEET  
NORTH AMERICAN VERTICAL DATUM OF 1988

This map was produced to conform with version 0.5.10 of the  
draft USGS Standards for 7.5-Minute Quadrangle Maps.  
A metadata file associated with this product is draft version 0.5.11



Tanner Mesa	Moqui Canyon	Greasewood Canyon
Skinney Rock	Palmer Mesa	Heffer Point
Shiprock	Chimney Rock	Waterflow



PALMER MESA, NM-CO  
2011

ADJOINING 7.5' QUADRANGLES