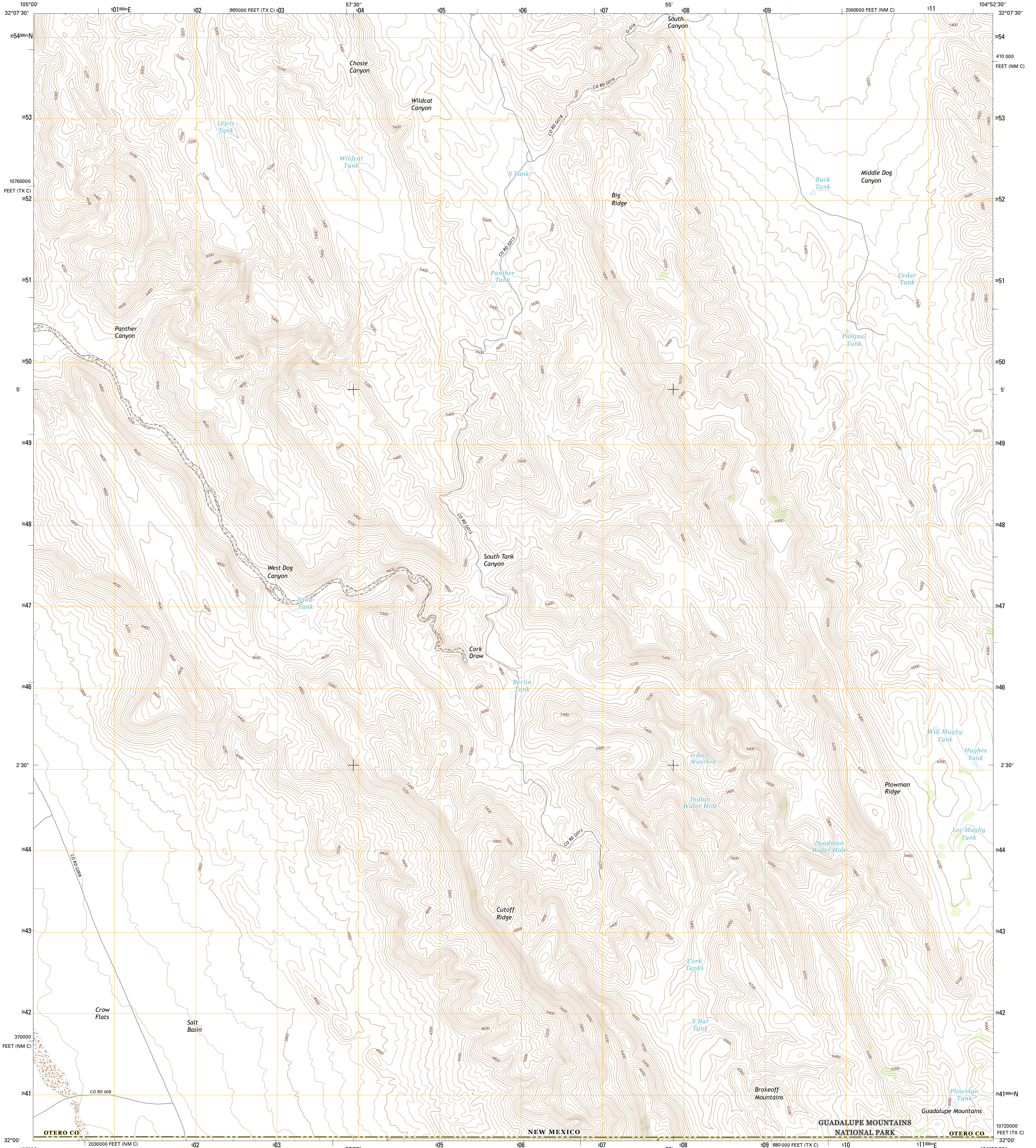




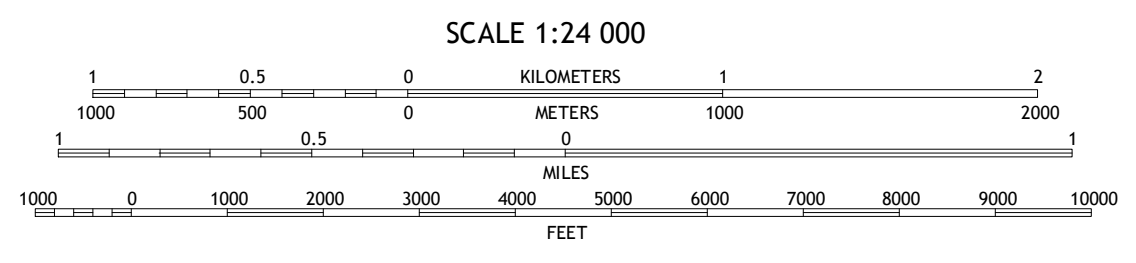
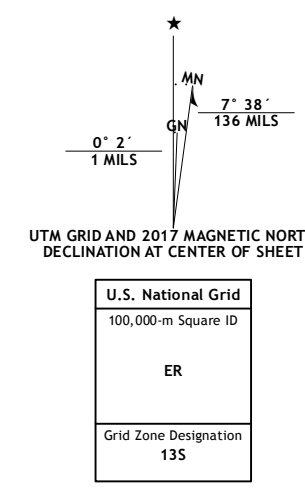
U.S. DEPARTMENT OF THE INTERIOR
U.S. GEOLOGICAL SURVEY



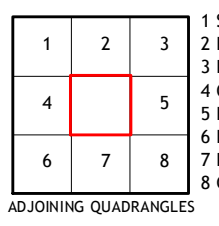
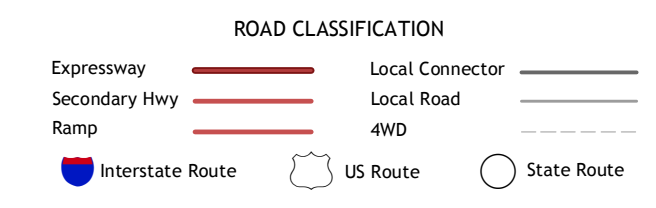
PANTHER CANYON QUADRANGLE
NEW MEXICO-Texas
7.5-MINUTE SERIES



Produced by the United States Geological Survey
 North American Datum of 1983 (NAD83)
 World Geodetic System of 1984 (WGS84) Projection and
 1 000-meter grid: Universal Transverse Mercator, Zone 13S
 10 000-foot ticks: New Mexico Coordinate System of 1983
 (central zone), Texas Coordinate System of 1983 (central zone)
 This map is not a legal document. Boundaries may be
 generalized for this map scale. Private lands within government
 reservations may not be shown. Obtain permission before
 entering private lands.
 Imagery:.....NAP, October 2014
 Roads:.....U.S. Census Bureau, 2015 - 2016
 Names:.....GNIS, 2016
 Hydrography:.....National Hydrography Dataset, 2014
 Contours:.....National Elevation Dataset, 2002
 Boundaries:.....Multiple sources; see metadata file 1972 - 2016
 Public Land Survey System:.....BLM, 2016
 Wetlands:.....FWS National Wetlands Inventory 1977 - 2014



CONTOUR INTERVAL 40 FEET
 NORTH AMERICAN VERTICAL DATUM OF 1988
 This map was produced to conform with the
 National Geospatial Program US Topo Product Standard, 2011.
 A metadata file associated with this product is draft version 0.6.19



- 1 Sheep Draw
- 2 La Paloma Canyon
- 3 Pickett Hill
- 4 Cienega School
- 5 El Paso Gap
- 6 Linda Lake North
- 7 X X Flat
- 8 Guadalupe Peak

PANTHER CANYON, NM-TX
2017

