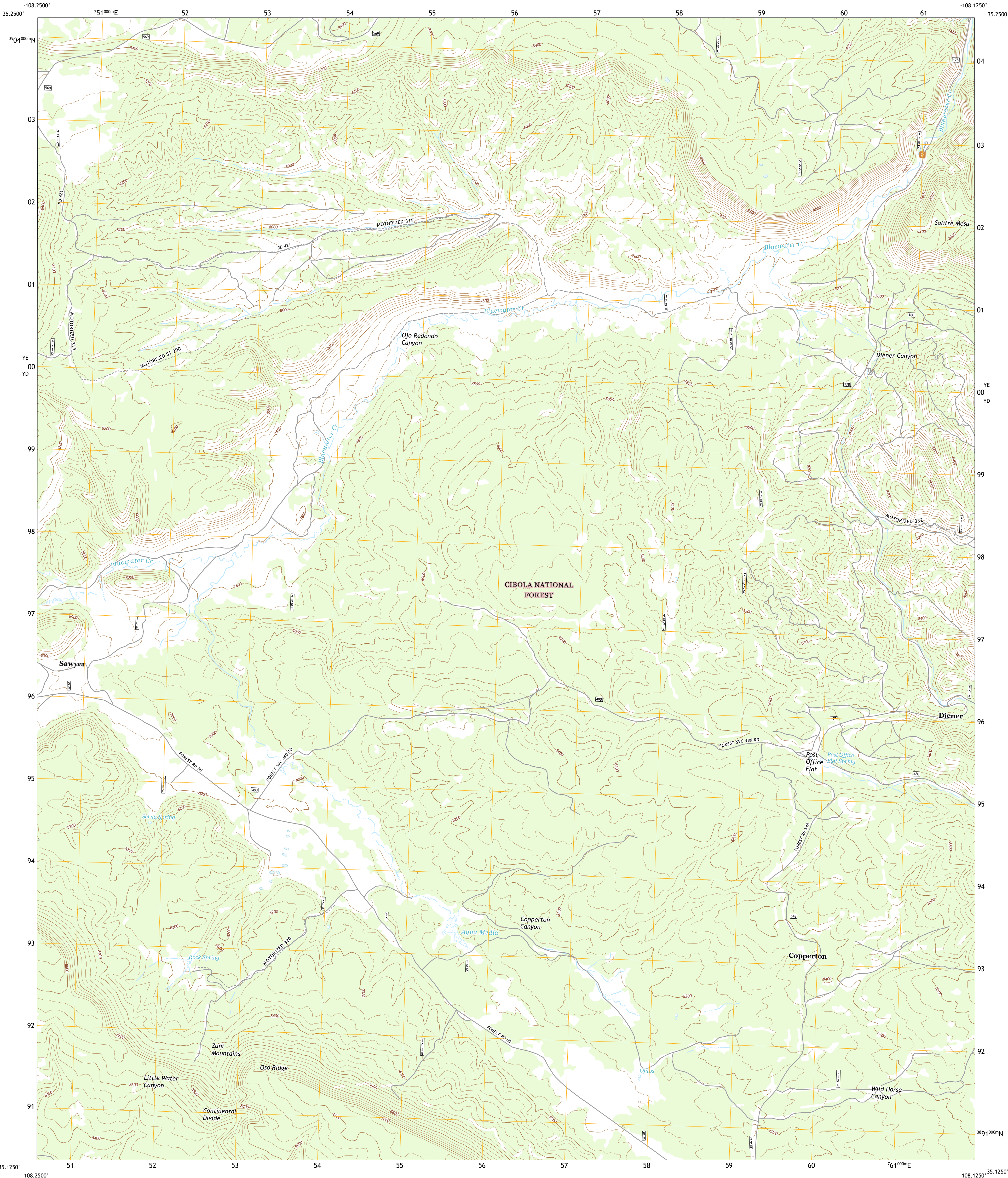




U.S. DEPARTMENT OF THE INTERIOR
U.S. GEOLOGICAL SURVEY

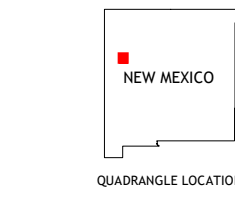
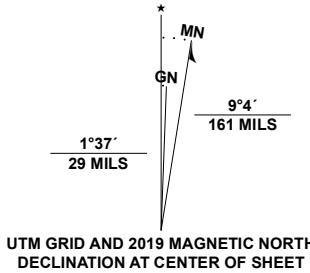


POST OFFICE FLAT QUADRANGLE
NEW MEXICO - CIBOLA COUNTY
7.5-MINUTE SERIES



Produced by the United States Geological Survey
North American Datum of 1983 (NAD83)
World Geodetic System of 1984 (WGS84). Projection and
1 000-meter grid: Universal Transverse Mercator, Zone 12S
This map is not a legal document. Boundaries may be
generalized for this map scale. Private lands within government
reservations may not be shown. Obtain permission before
entering private lands.

Imagery.....NAIP, May 2016 - August 2016
Roads.....U.S. Census Bureau, Not Available
Roads within US Forest Service Lands.....FSTopo Data
with Limited Forest Service updates, 2013 - 2016
Names.....GNIS, 1978 - 2018
Hydrography.....National Hydrography Dataset, 2002 - 2019
Contours.....National Elevation Dataset, 2019
Boundaries.....Multiple sources: see metadata file 2017 - 2018
Public Land Survey System.....BLM, 2019
Wetlands.....FWS National Wetlands Inventory Not Available



1	2	3
4	5	6
7	8	9

ADJOINING QUADRANGLES

1 Cottonwood Canyon
2 Pine Canyon
3 Prewitt
4 Kettner Canyon
5 Mount Sedgwick
6 El Morro
7 Valle Largo
8 Paxton Springs

ROAD CLASSIFICATION	
Expressway	Local Connector
Secondary Hwy	Local Road
Ramp	4WD
Interstate Route	US Route
FS Primary Route	State Route
	FS Passenger Route
	FS High Clearance Route

Check with local Forest Service unit
for current travel conditions and restrictions.

POST OFFICE FLAT, NM
2020

