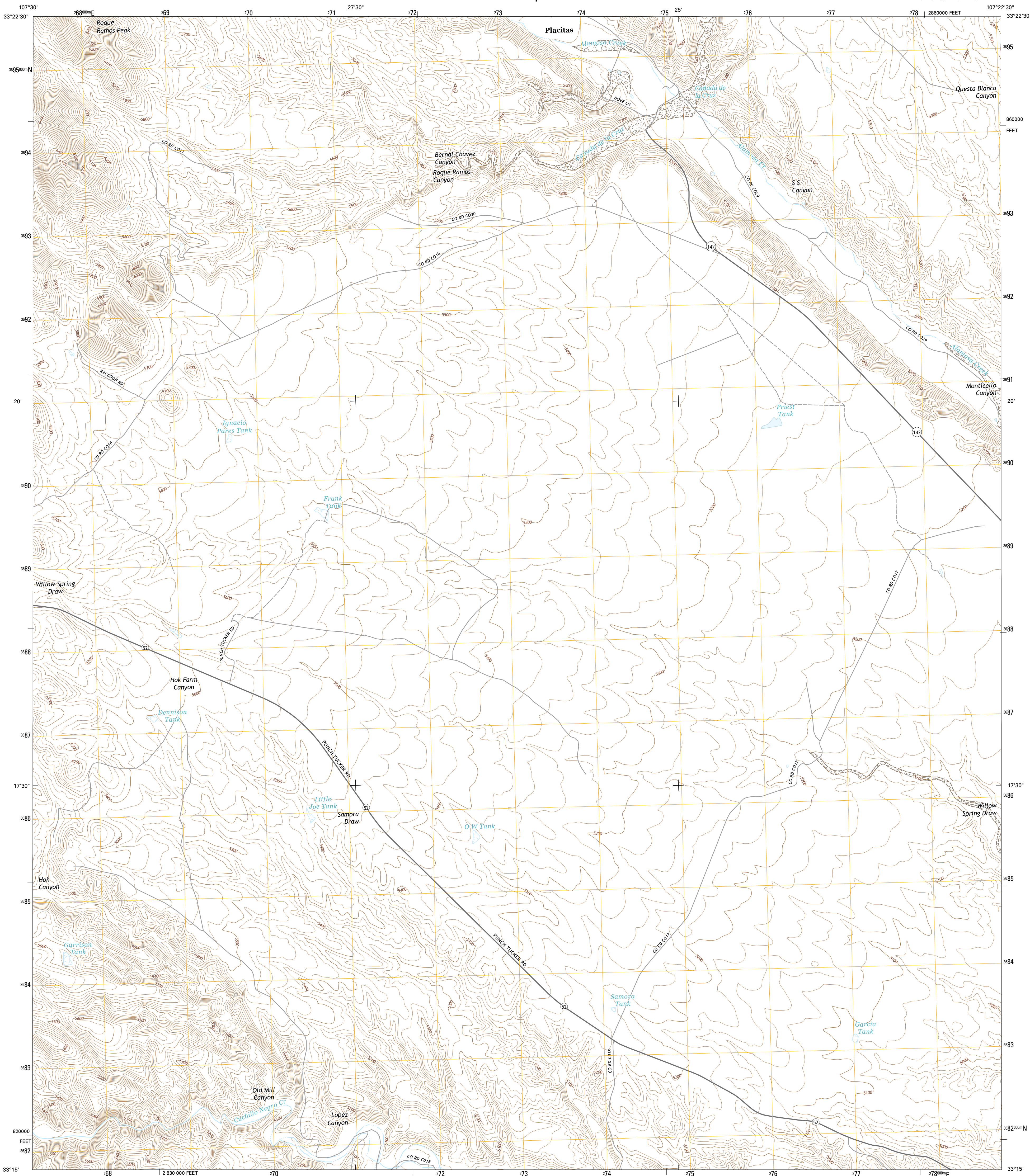




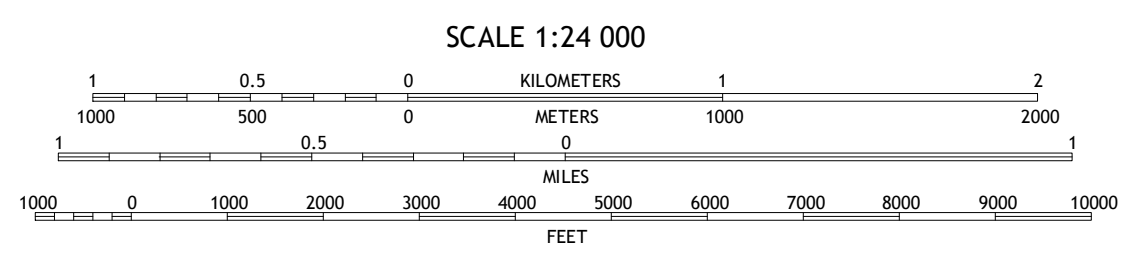
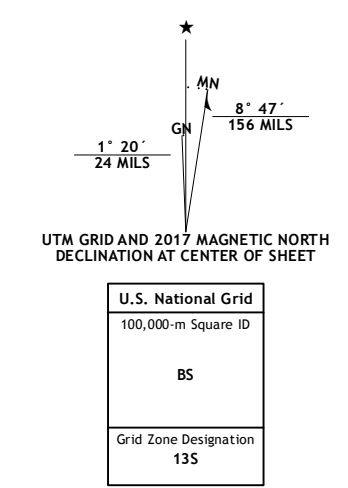
U.S. DEPARTMENT OF THE INTERIOR  
U.S. GEOLOGICAL SURVEY



PRIEST TANK QUADRANGLE  
NEW MEXICO-SIERRA CO.  
7.5-MINUTE SERIES



Produced by the United States Geological Survey  
North American Datum of 1983 (NAD83)  
World Geodetic System of 1984 (WGS84) Projection and  
1 000-meter grid: Universal Transverse Mercator, Zone 13S  
10 000-foot ticks: New Mexico Coordinate System of 1983 (west  
zone)  
This map is not a legal document. Boundaries may be  
generalized for this map scale. Private lands within government  
reservations may not be shown. Obtain permission before  
entering private lands.  
Imagery: NADP, October 2014  
Roads: U.S. Census Bureau, 2015 - 2016  
Names: GNIS, 2016  
Hydrography: National Hydrography Dataset, 2014  
Contours: National Elevation Dataset, 2000  
Boundaries: Multiple sources; see metadata file 1972 - 2016  
Public Land Survey System: BLM, 2016  
Wetlands: FWS National Wetlands Inventory 1977 - 2014



NEW MEXICO  
QUADRANGLE LOCATION

ROAD CLASSIFICATION

- Expressway
- Secondary Hwy
- Ramp
- Interstate Route
- Local Connector
- Local Road
- 4WD
- US Route
- State Route

ADJOINING QUADRANGLES

1	2	3
4	5	6
7	8	

- Jiralosa Mountain
- Monticello
- Sierra Tijardo
- Chise
- Huerfano Hill
- Thumb Tank Peak
- Williamsburg NW
- Cuchillo

PRIEST TANK, NM  
2017

