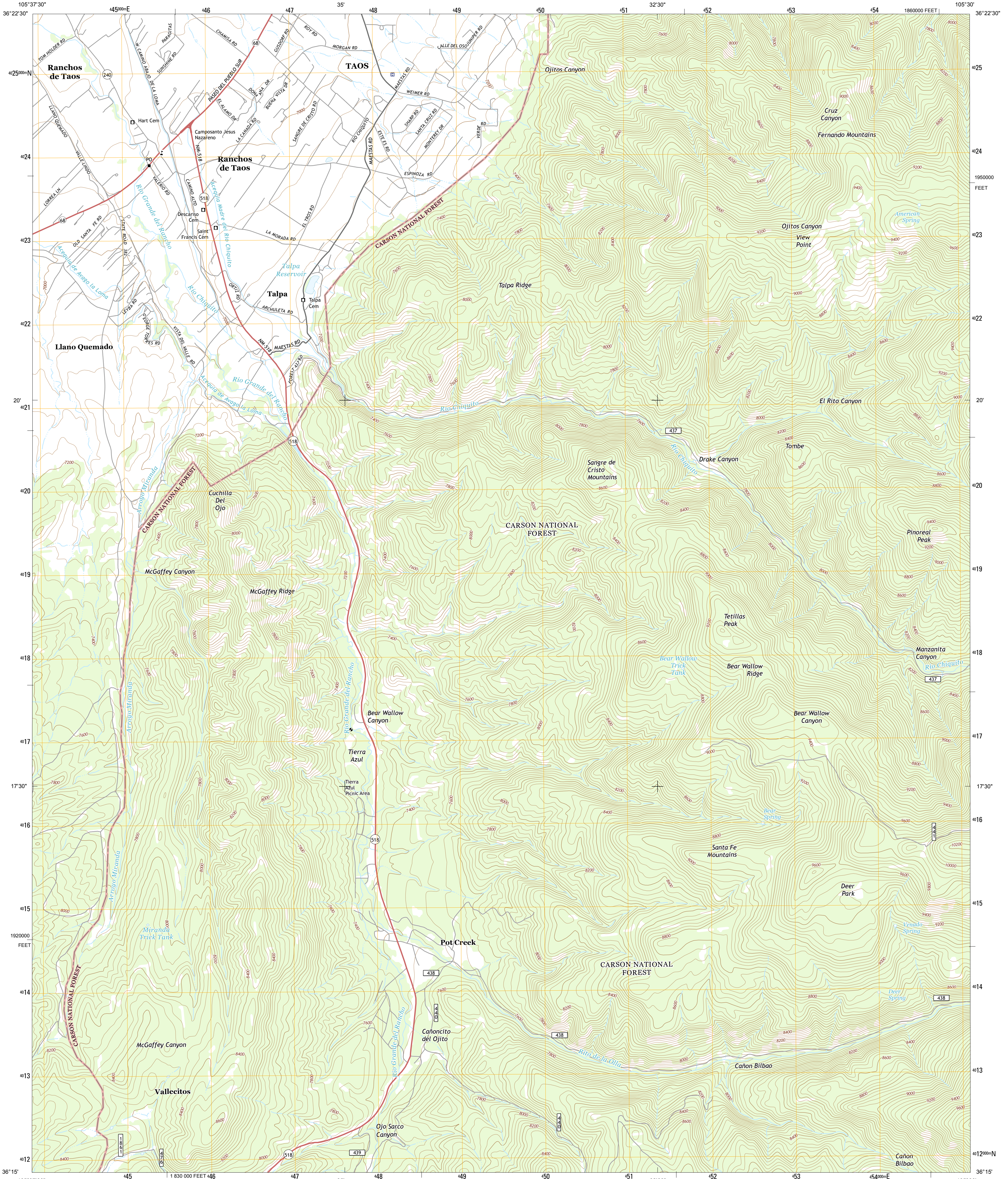




U.S. DEPARTMENT OF THE INTERIOR
U. S. GEOLOGICAL SURVEY



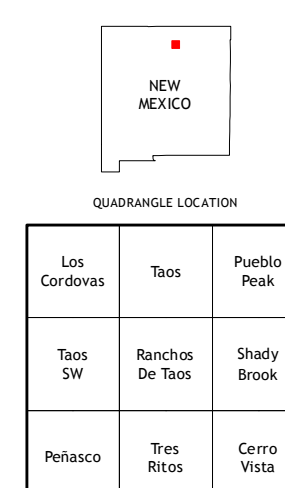
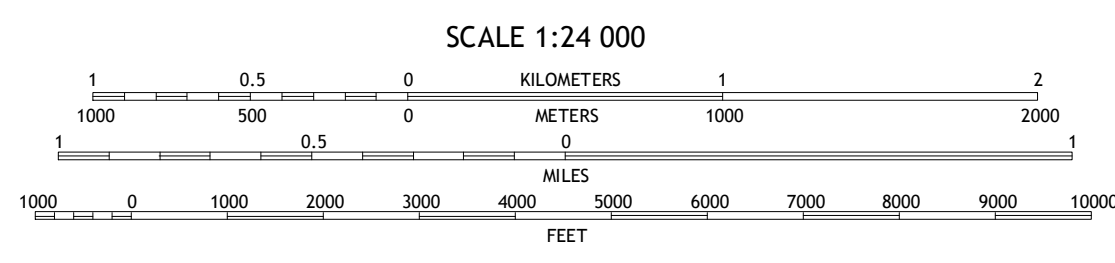
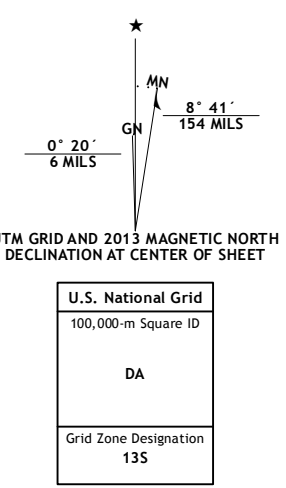
RANCHOS DE TAOS QUADRANGLE
NEW MEXICO-TAOS CO.
7.5-MINUTE SERIES



Produced by the United States Geological Survey
North American Datum of 1983 (NAD83)
World Geodetic System of 1984 (WGS84) Projection and
1 000-meter grid: Universal Transverse Mercator, Zone 13S
10 000-foot ticks: New Mexico Coordinate System of 1983
(central zone)

This map is not a legal document. Boundaries may be
generalized for this map scale. Private lands within government
reservations may not be shown. Obtain permission before
entering private lands.

Imagery.....NAIP, May 2011 - June 2011
Roads.....US Forest Service Lands.....FS Topo Data
with limited Forest Service updates, 2013
Names.....GNIS, 2013
Hydrography.....National Hydrography Dataset, 2011
Contours.....National Elevation Dataset, 2000
Boundaries.....Census, IBWC, IBC, USGS, 1972 - 2012
Public Land Survey System.....BLM, 2011



ROAD CLASSIFICATION

Expressway ——— Local Connector ———
Secondary Hwy ——— Local Road ———
Ramp ——— 4WD ———
Interstate Route ——— US Route ——— State Route ———
FS Primary Route ——— FS Passenger Route ——— FS High Route ———
Clearance Route ———

Check with local Forest Service unit
for current travel conditions and restrictions.

RANCHOS DE TAOS, NM
2013



NSA REF NO. USGS X 2 K 3 7 0 5