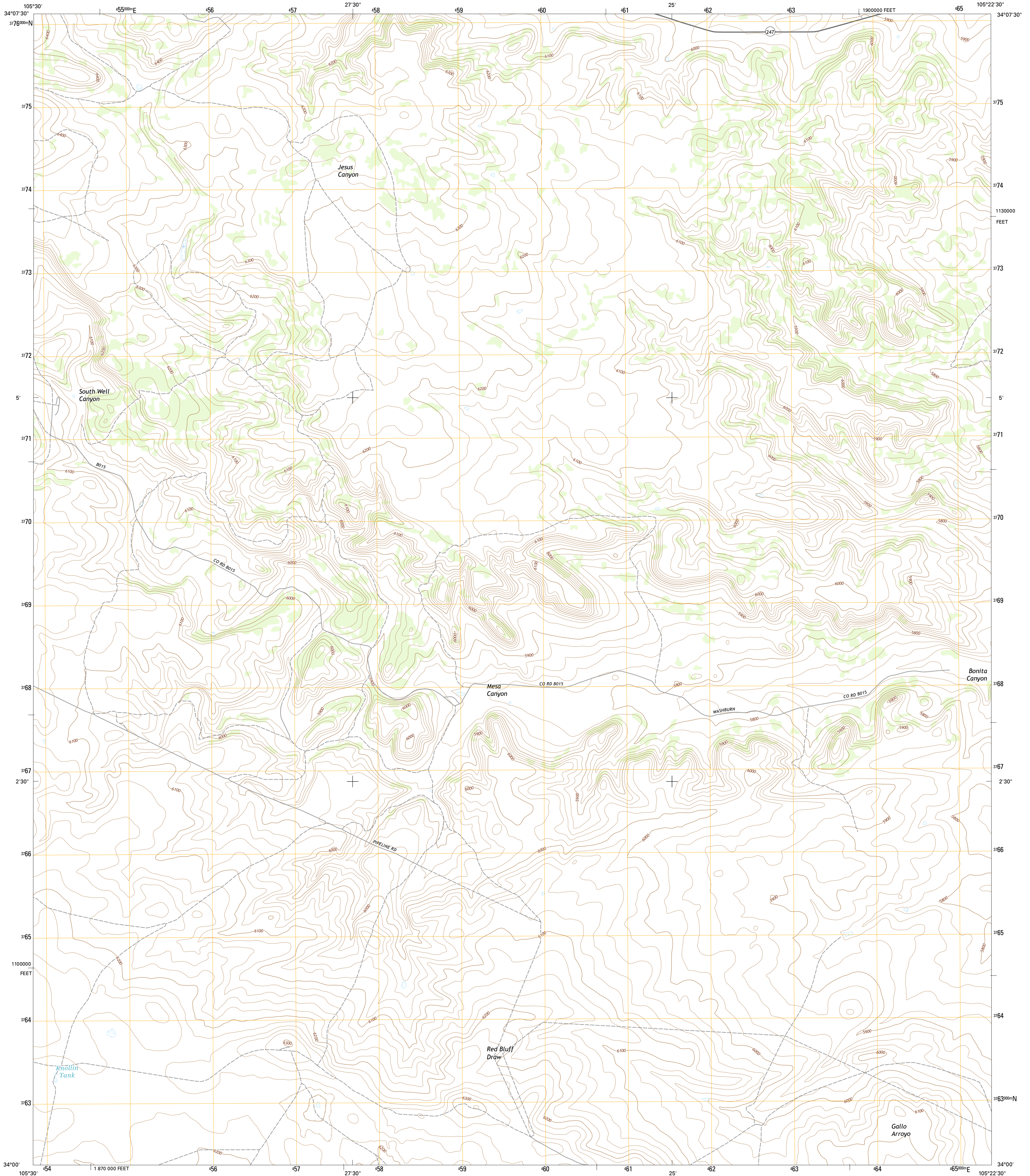




U.S. DEPARTMENT OF THE INTERIOR  
U.S. GEOLOGICAL SURVEY



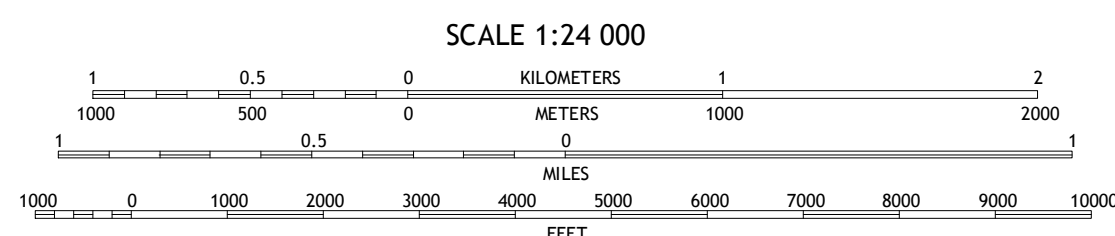
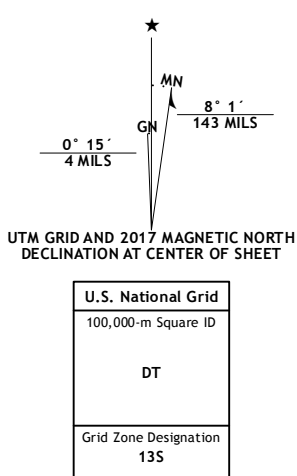
RED BLUFF DRAW WEST QUADRANGLE  
NEW MEXICO-LINCOLN CO.  
7.5-MINUTE SERIES



Produced by the United States Geological Survey  
North American Datum of 1983 (NAD83)  
World Geodetic System of 1984 (WGS84). Projection and  
1 000-meter grid: Universal Transverse Mercator, Zone 13S  
10 000-foot ticks: New Mexico Coordinate System of 1983  
(central zone)

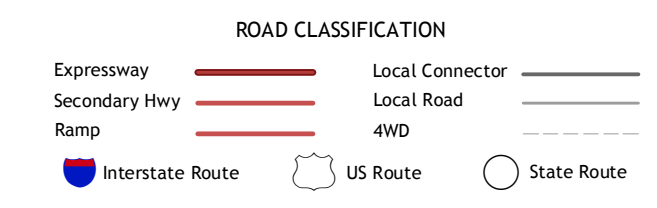
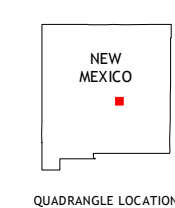
This map is not a legal document. Boundaries may be  
generalized for this map scale. Private lands within government  
reservations may not be shown. Obtain permission before  
entering private lands.

Imagery.....NIP, October 2014  
Roads.....U.S. Census Bureau, 2015  
Names.....GNIS, 2016  
Hydrography.....National Hydrography Dataset, 2014  
Contours.....National Elevation Dataset, 1999  
Boundaries.....Multiple sources; see metadata file 1972 - 2016  
Public Land Survey System.....BLM, 2016  
Wetlands.....FWS National Wetlands Inventory 1977 - 2014



CONTOUR INTERVAL 20 FEET  
NORTH AMERICAN VERTICAL DATUM OF 1988

This map was produced to conform with the  
National Geospatial Program US Topo Product Standard, 2011.  
A metadata file associated with this product is draft version 0.6.19



1	2	3	1 Corona South
4	5	2 Gallo Spring Canyon	2 Gallo Spring Canyon NE
6	7	3 Gallo Spring Canyon NE	4 Pelon Hill
8	8	4 Pelon Hill	5 Red Bluff Draw East
		5 Red Bluff Draw East	6 Chupadero Mountain
		6 Chupadero Mountain	7 Haspers Camp
		7 Haspers Camp	8 Golondrina Well
		8 Golondrina Well	

RED BLUFF DRAW WEST, NM  
2017

