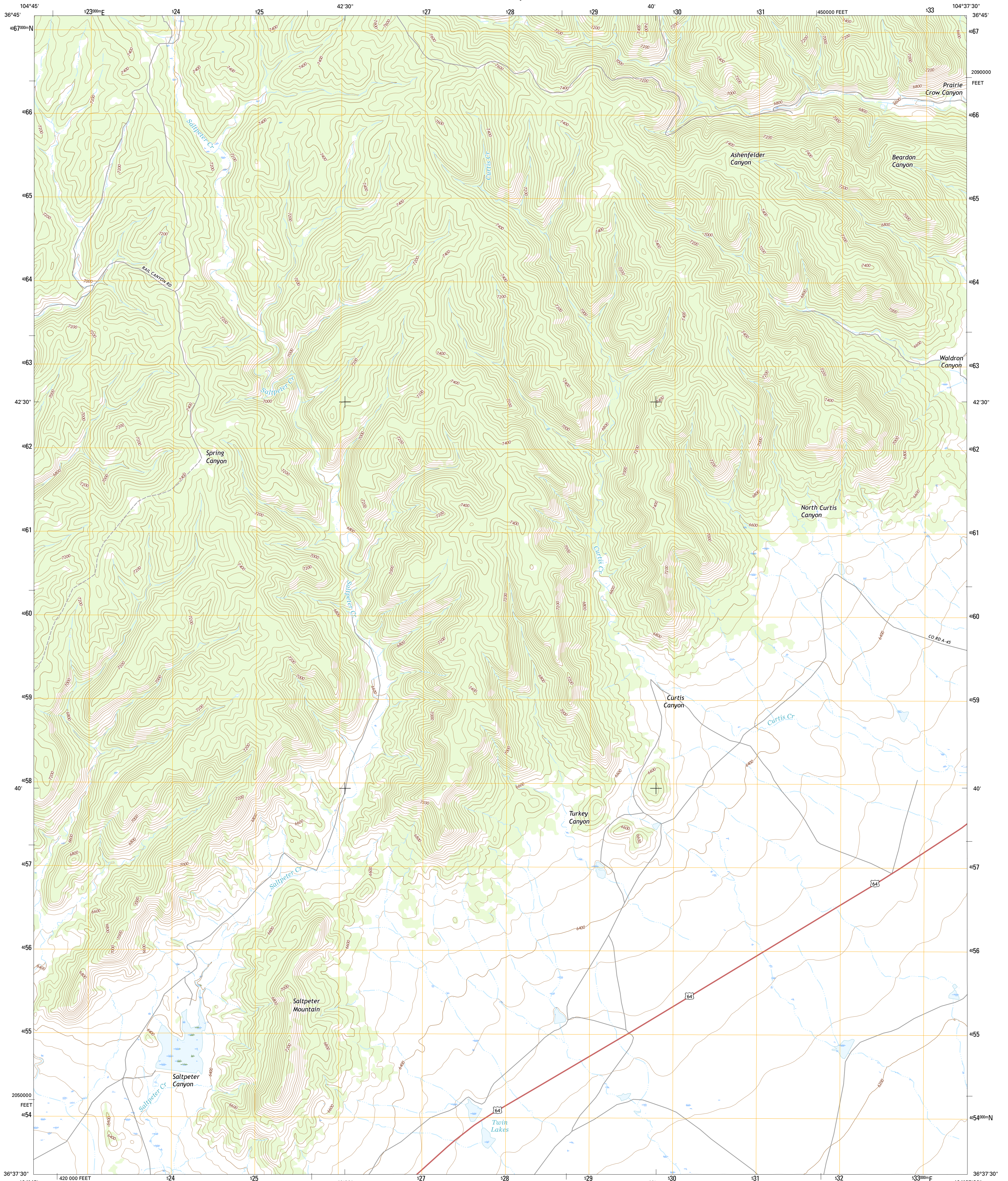




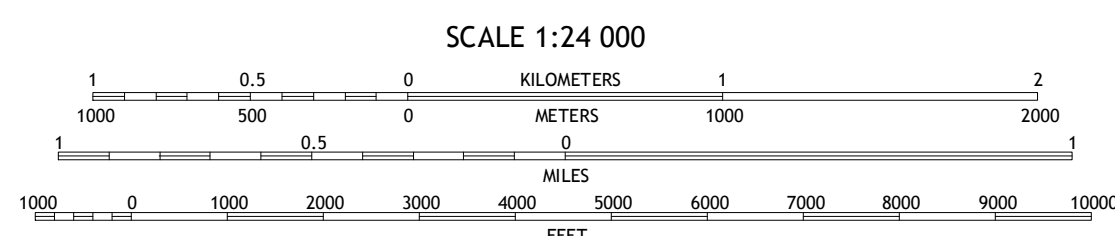
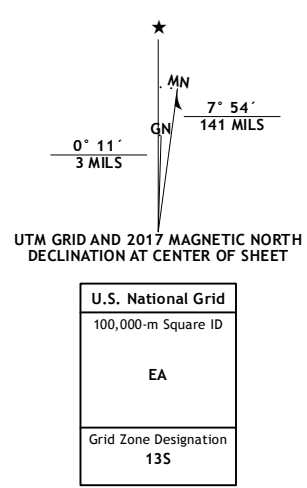
U.S. DEPARTMENT OF THE INTERIOR
U.S. GEOLOGICAL SURVEY



SALTPETER MOUNTAIN QUADRANGLE
NEW MEXICO-COLFAX CO.
7.5-MINUTE SERIES



Produced by the United States Geological Survey
North American Datum of 1983 (NAD83)
World Geodetic System of 1984 (WGS84). Projection and
10 000-foot ticks: New Mexico Coordinate System of 1983 (east
zone)
This map is not a legal document. Boundaries may be
generalized for this map scale. Private lands within government
reservations may not be shown. Obtain permission before
entering private lands.
Imagery:.....NAP, October 2014
Roads:.....U.S. Census Bureau, 2015 - 2016
Names:.....GNIS, 2016
Hydrography:.....National Hydrography Dataset, 2014
Contours:.....National Elevation Dataset, 2002
Boundaries:.....Multiple sources; see metadata file 1972 - 2016
Public Land Survey System:.....BLM, 2016
Wetlands:.....FWS National Wetlands Inventory 1977 - 2014



CONTOUR INTERVAL 40 FEET
NORTH AMERICAN VERTICAL DATUM OF 1988
This map was produced to conform with the
National Geospatial Program US Topo Product Standard, 2011.
A metadata file associated with this product is draft version 0.6.19

ROAD CLASSIFICATION

- Expressway
- Secondary Hwy
- Ramp
- Interstate Route
- Local Connector
- Local Road
- 4WD
- US Route
- State Route

QUADRANGLE LOCATION

1	2	3
4	5	6
7	8	9

ADJOINING QUADRANGLES

- 1 Caliente Canyon South
- 2 Curtis Camp
- 3 Red River Peak
- 4 Dawson
- 5 Koehler
- 6 Cimarron SE
- 7 Colfax
- 8 Maxwell

SALTPETER MOUNTAIN, NM
2017

