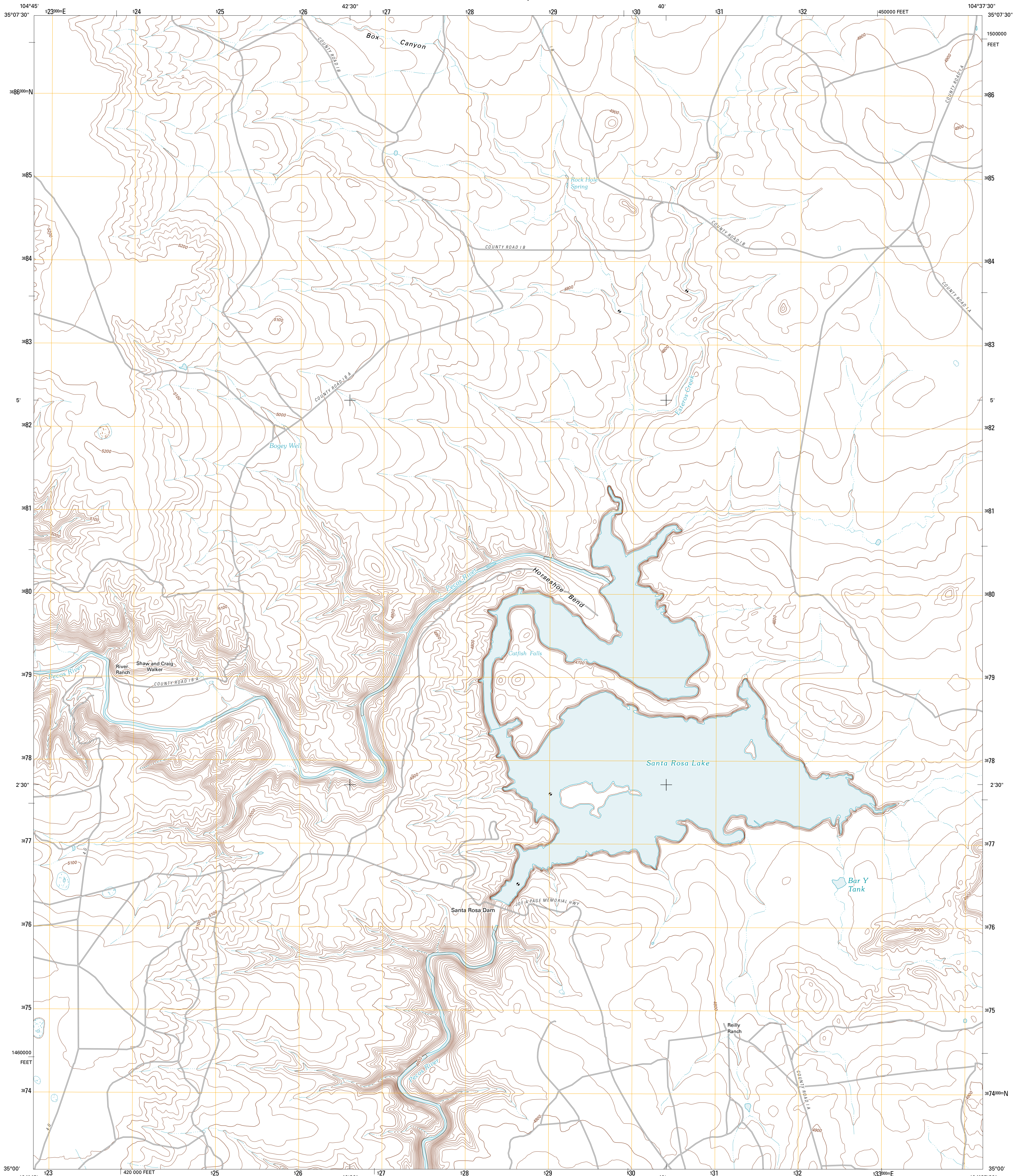




U.S. DEPARTMENT OF THE INTERIOR
U. S. GEOLOGICAL SURVEY

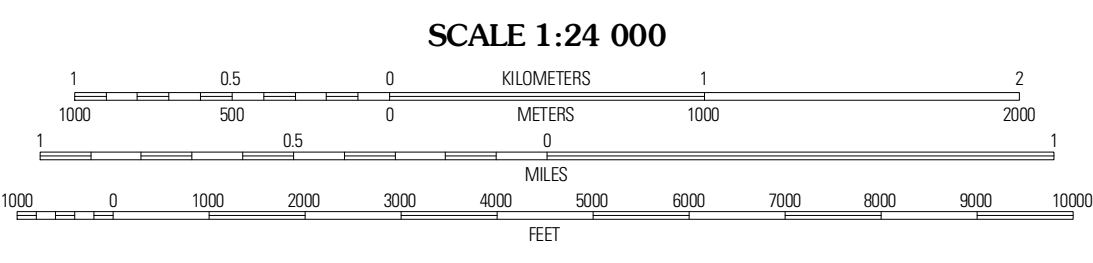
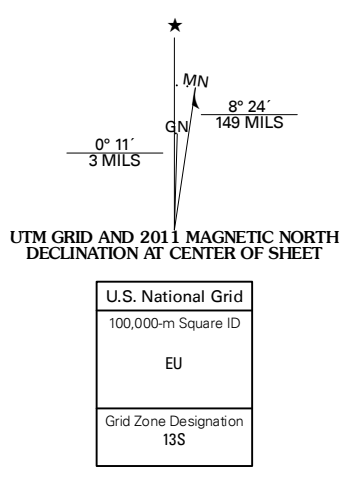


SANTA ROSA LAKE QUADRANGLE
NEW MEXICO
7.5-MINUTE SERIES



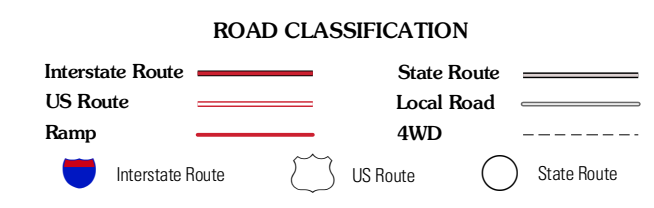
Produced by the United States Geological Survey
North American Datum of 1983 (NAD83)
World Geodetic System of 1984 (WGS84) Projection and
1 000-meter grid: Universal Transverse Mercator, Zone 13S
10 000-foot ticks: New Mexico Coordinate System of 1983
(east zone)

Imagery: NMAP, May 2009 - June 2009
Roads: 2006-2010 Take Atlas
Names: GNS, 2010
Hydrography: National Hydrography Dataset, 2009
Contours: National Elevation Dataset, 2000



CONTOUR INTERVAL 20 FEET
NORTH AMERICAN VERTICAL DATUM OF 1988

This map was produced to conform with version 0.5.10 of the draft USGS Standards for 7.5-Minute Quadrangle Maps. A metadata file associated with this product is draft version 0.5.11



QUADRANGLE LOCATION

Horse Flower Tank	Bar Y Ranch	Mesa Chertoso
Colonias	Santa Rosa Lake	Sacaton Draw
Pastura NE	Santa Rosa	Sunshine Mesa

ADJOINING 7.5 QUADRANGLES

SANTA ROSA LAKE, NM
2011