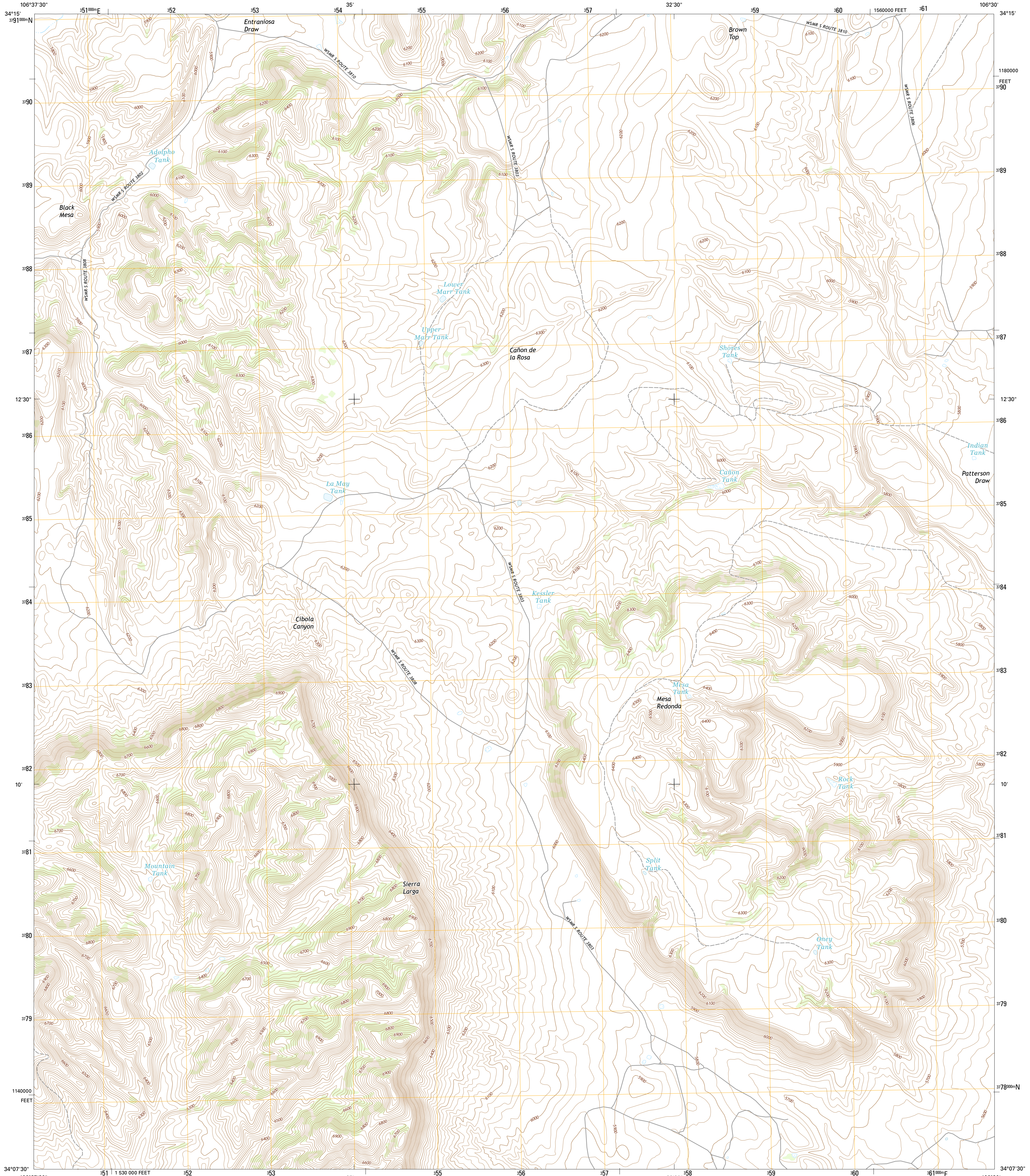




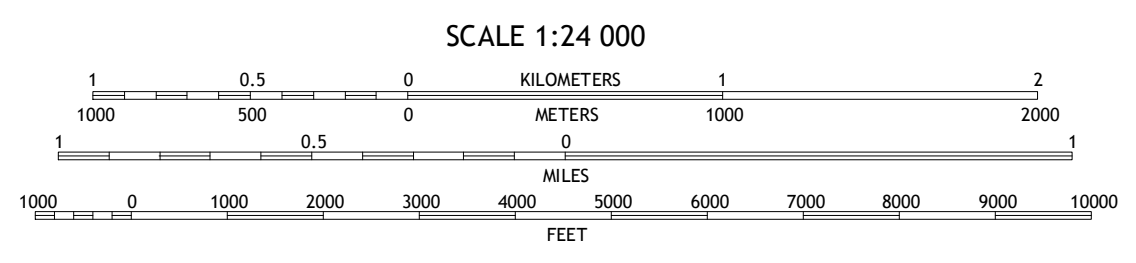
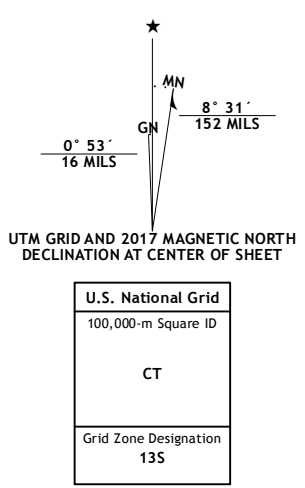
U.S. DEPARTMENT OF THE INTERIOR  
U.S. GEOLOGICAL SURVEY



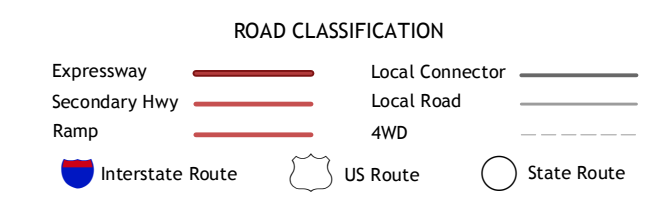
SIERRA LARGA NORTH QUADRANGLE  
NEW MEXICO-SOCORRO CO.  
7.5-MINUTE SERIES



**Produced by the United States Geological Survey**  
 North American Datum of 1983 (NAD83)  
 World Geodetic System of 1984 (WGS84), Projection and  
 1 000-foot ticks: New Mexico Coordinate System of 1983  
 (central zone)  
 This map is not a legal document. Boundaries may be  
 generalized for this map scale. Private lands within government  
 reservations may not be shown. Obtain permission before  
 entering private lands.  
 Imagery.....N.A.I.P., October 2014  
 Roads.....U.S. Census Bureau, 2015  
 Names.....GNIS, 2016  
 Hydrography.....National Hydrography Dataset, 2014  
 Contours.....National Elevation Dataset, 1999  
 Boundaries.....Multiple sources; see metadata file 1972 - 2016  
 Public Land Survey System.....BLM, 2016  
 Wetlands.....FWS National Wetlands Inventory 1977 - 2014



CONTOUR INTERVAL 20 FEET  
 NORTH AMERICAN VERTICAL DATUM OF 1988  
 This map was produced to conform with the  
 National Geospatial Program US Topo Product Standard, 2011.  
 A metadata file associated with this product is draft version 0.6.19



1	2	3
4	5	6
7	8	

ADJOINING QUADRANGLES

- 1 Becker SW
- 2 Cerro Montoso
- 3 Rayo Hills
- 4 Sierra De La Cruz
- 5 Bishop Ranch
- 6 Bustos Well
- 7 Sierra Larga South
- 8 Orndorff Ranch

SIERRA LARGA NORTH, NM  
2017

