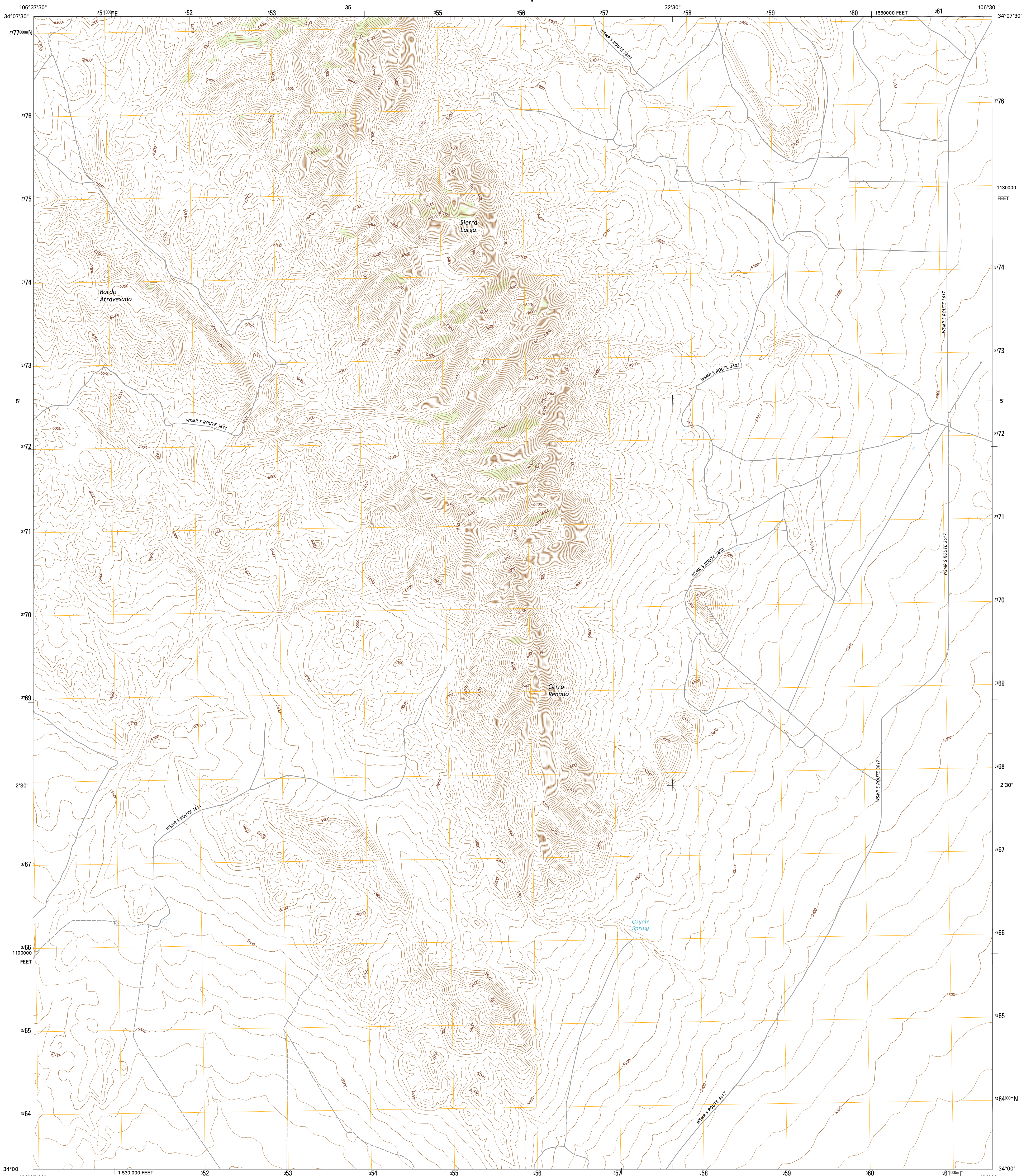




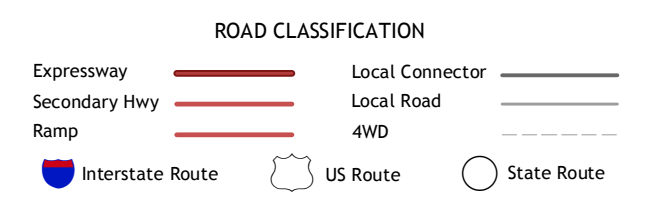
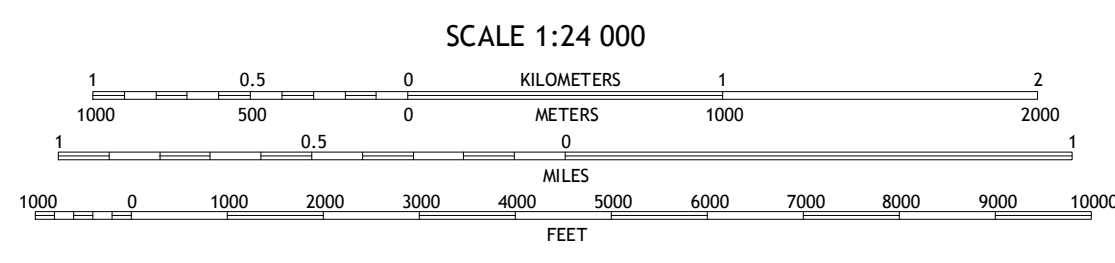
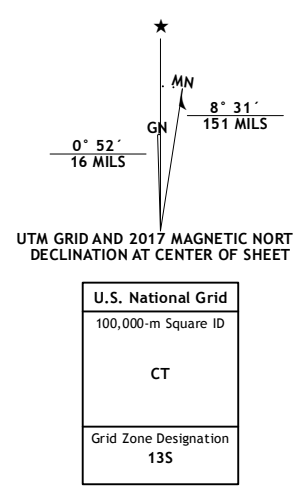
U.S. DEPARTMENT OF THE INTERIOR  
U.S. GEOLOGICAL SURVEY



SIERRA LARGA SOUTH QUADRANGLE  
NEW MEXICO-SOCORRO CO.  
7.5-MINUTE SERIES



**Produced by the United States Geological Survey**  
 North American Datum of 1983 (NAD83)  
 World Geodetic System of 1984 (WGS84). Projection and 1 000-meter grid: Universal Transverse Mercator, Zone 13S  
 10 000-foot ticks: New Mexico Coordinate System of 1983 (central zone)  
 This map is not a legal document. Boundaries may be generalized for this map scale. Private lands within government reservations may not be shown. Obtain permission before entering private lands.  
 Imagery.....NAIP, October 2014  
 Roads.....U.S. Census Bureau, 2015  
 Names.....GNIS, 2016  
 Hydrography.....National Hydrography Dataset, 2014  
 Contours.....National Elevation Dataset, 2000  
 Boundaries.....Multiple sources; see metadata file 1972 - 2016  
 Public Land Survey System.....BLM, 2016  
 Wetlands.....FWS National Wetlands Inventory 1977 - 2014



1	2	3
4	5	6
7	8	

ADJOINING QUADRANGLES

- 1 Sierra De La Cruz
  - 2 Sierra Larga North
  - 3 Bishop Ranch
  - 4 Bustos Well
  - 5 Orndorff Ranch
  - 6 Canon Agua Buena
  - 7 Prairie Spring
  - 8 Wrye Peak NW
- SIERRA LARGA SOUTH, NM**  
2017



NSA REF NO. U.S. G.S. X 2 4 K 4 1 2 8