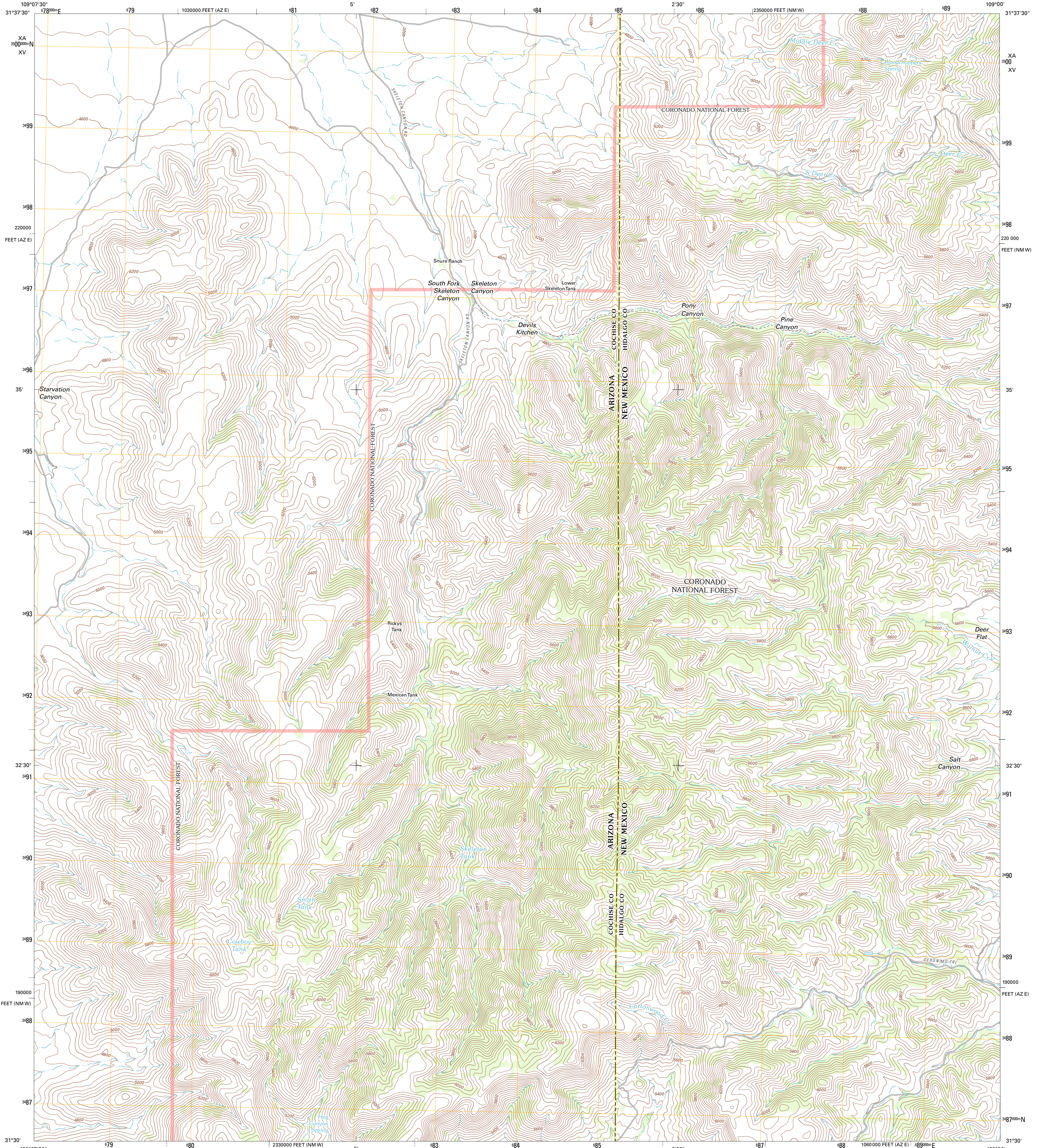




U.S. DEPARTMENT OF THE INTERIOR
U. S. GEOLOGICAL SURVEY

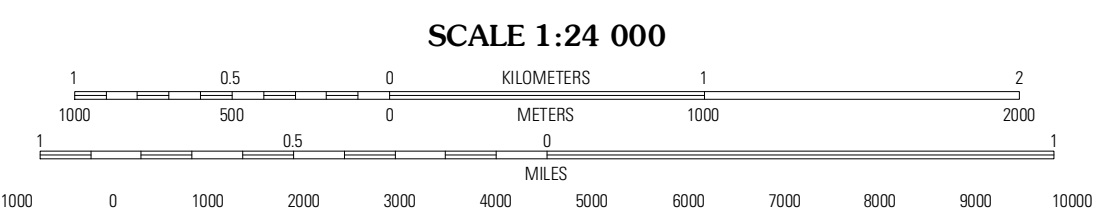
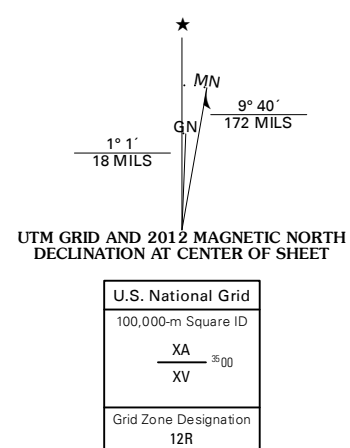


SKELETON CANYON QUADRANGLE
NEW MEXICO-ARIZONA
7.5-MINUTE SERIES



Produced by the United States Geological Survey
North American Datum of 1983 (NAD83)
World Geodetic System of 1984 (WGS84). Projection and
1 000-meter grid: Universal Transverse Mercator, Zone 12R
10 000-foot ticks: Arizona Coordinate System of 1983 (east
zone), New Mexico Coordinate System of 1983 (west zone)

Imagery.....NAIP, June 2010
Roads.....©2006-2011 TomTom
Roads within US Forest Service Lands.....FSTopo Data
with limited Forest Service updates, 2009
Names.....©2011
Hydrography.....National Hydrography Dataset, 2010
Contours.....Not Available
Boundaries.....Census, IBWC, IBC, USGS, 1972 - 2010



CONTOURS NOT PRESENT BECAUSE AVAILABLE ELEVATION
DATA DO NOT MEET ACCURACY REQUIREMENTS

This map was produced to conform with the
National Geospatial Program US Topo Product Standard, 2011.
A metadata file associated with this product is draft version 0.6.1

ROAD CLASSIFICATION

- Interstate Route
- US Route
- Ramp
- State Route
- Local Road
- 4WD
- FS Passenger Route
- FS High Clearance Route

Check with local Forest Service unit
for current travel conditions and restrictions.

QUADRANGLE LOCATION

Apache	Skull Canyon	Mount Baldy
Paramore Crater	Skeleton Canyon	Clanton Draw
Milton Dollar	Guadalupe Spring	Black Point

ADJOINING 7.5 QUADRANGLES

SKELETON CANYON, NM-AZ
2012