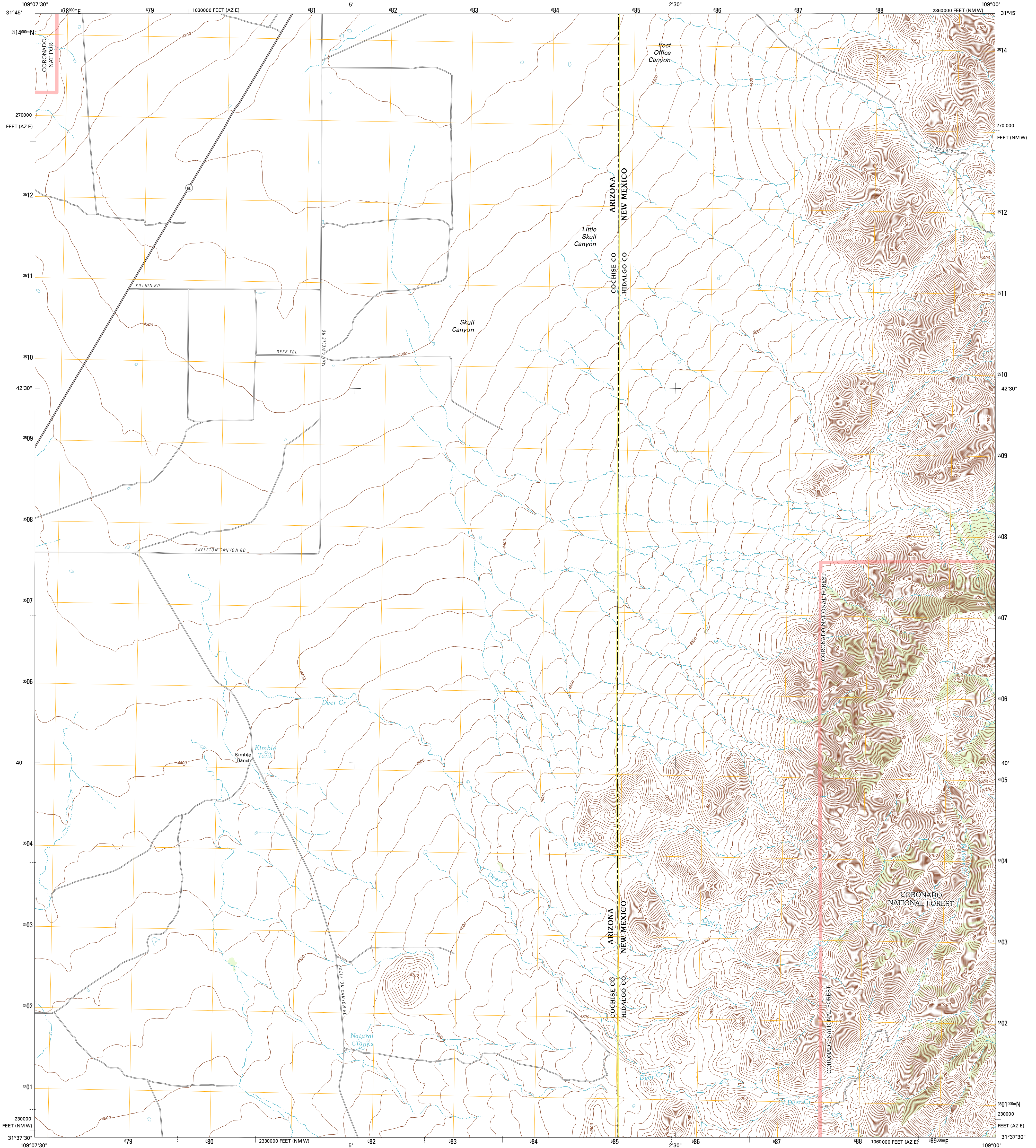




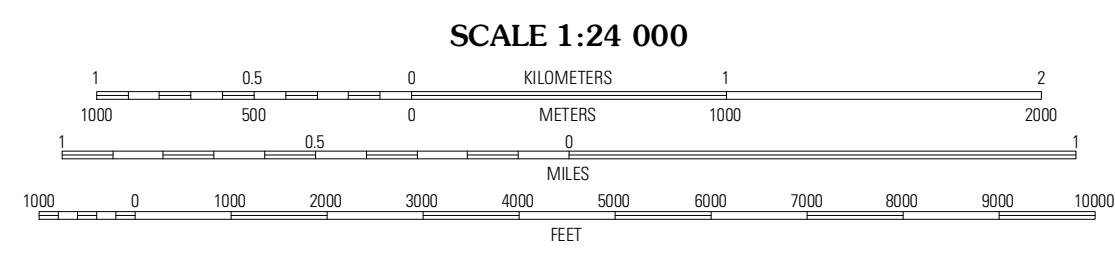
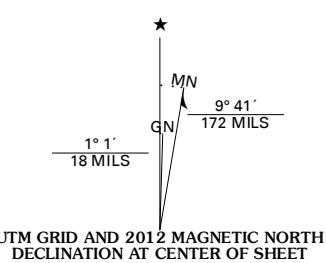
U.S. DEPARTMENT OF THE INTERIOR  
U. S. GEOLOGICAL SURVEY



SKULL CANYON QUADRANGLE  
NEW MEXICO-ARIZONA  
7.5-MINUTE SERIES



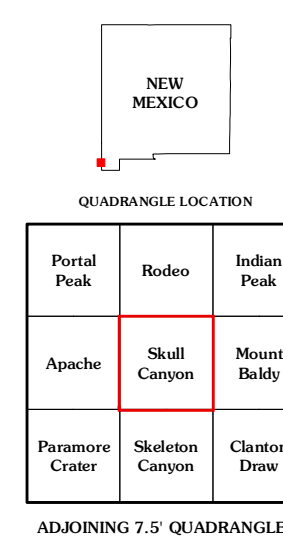
Produced by the United States Geological Survey  
North American Datum of 1983 (NAD83)  
World Geodetic System of 1984 (WGS84). Projection and  
1 000-meter grid: Universal Transverse Mercator, Zone 12R  
10 000-foot ticks: Arizona Coordinate System of 1983 (east  
zone), New Mexico Coordinate System of 1983 (west zone)



CONTOUR INTERVAL 20 FEET  
NORTH AMERICAN VERTICAL DATUM OF 1988  
This map was produced to conform with the  
National Geospatial Program US Topo Product Standard, 2011.  
A metadata file associated with this product is draft version 0.6.1

Imagery: N/AIP, June 2010  
Roads: ©2006-2011 TomTom  
Roads within US Forest Service Lands: FSTopo Data  
with limited Forest Service updates, 2009  
Names: GNS, 2011  
Hydrography: National Hydrography Dataset, 2010  
Contours: National Elevation Dataset, 2001  
Boundaries: Census, IBWC, IBC, USGS, 1972 - 2010

U.S. National Grid	100,000m Square ID
XA	
Grid Zone Designation	12R



**ROAD CLASSIFICATION**

Interstate Route	State Route
US Route	Local Road
Ramp	4WD

FS Primary Route   
 US Route   
 FS Passenger Route   
 State Route   
 FS High Clearance Route

Check with local Forest Service unit for current travel conditions and restrictions.

SKULL CANYON, NM-AZ  
2012

ADJOINING 7.5 QUADRANGLES