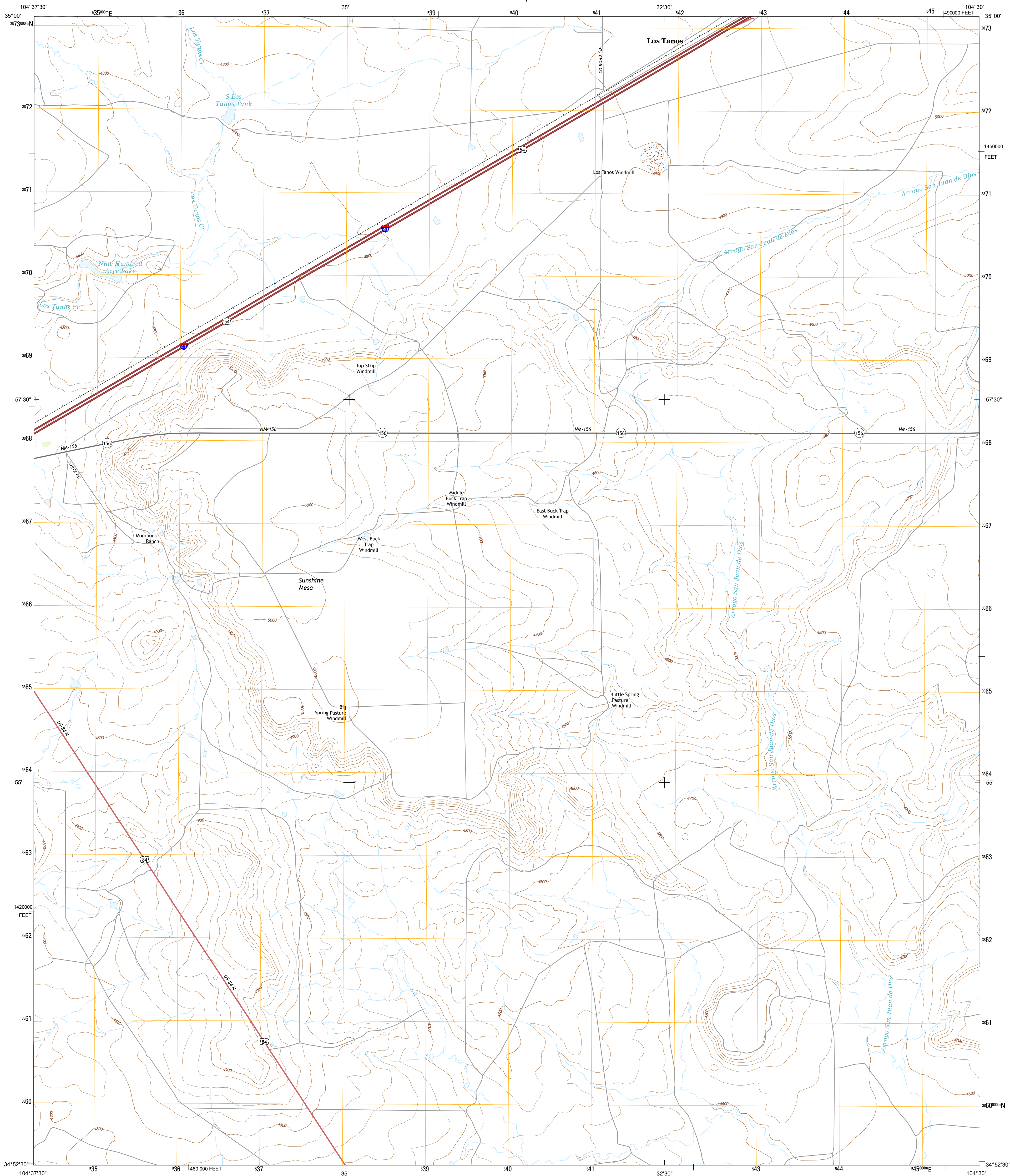




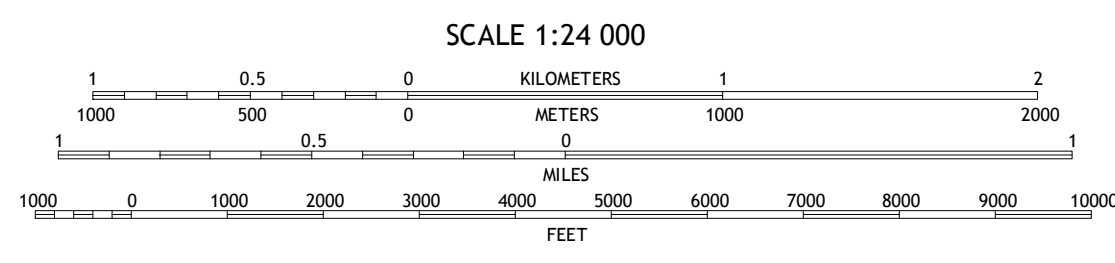
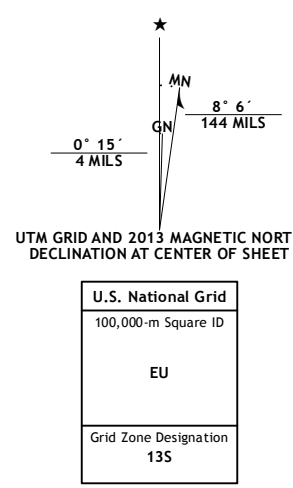
U.S. DEPARTMENT OF THE INTERIOR
U. S. GEOLOGICAL SURVEY



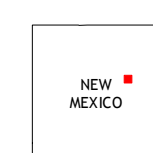
SUNSHINE MESA QUADRANGLE
NEW MEXICO-GUADALUPE CO.
7.5-MINUTE SERIES



Produced by the United States Geological Survey
 North American Datum of 1983 (NAD83)
 World Geodetic System of 1984 (WGS84) Projection and
 1 000-meter grid: Universal Transverse Mercator, Zone 13S
 10 000-foot ticks: New Mexico Coordinate System of 1983 (east zone)
 This map is not a legal document. Boundaries may be
 generalized for this map scale. Private lands within government
 reservations may not be shown. Obtain permission before
 entering private lands.
 Imagery.....NIP, May 2011
 Roads.....©2006-2013 TomTom
 Names.....IGNIS, 2013
 Hydrography.....National Hydrography Dataset, 2011
 Contours.....National Elevation Dataset, 2000
 Boundaries.....Census, IBWC, IBC, USGS, 1972 - 2012
 Public Land Survey System.....BLM, 2011

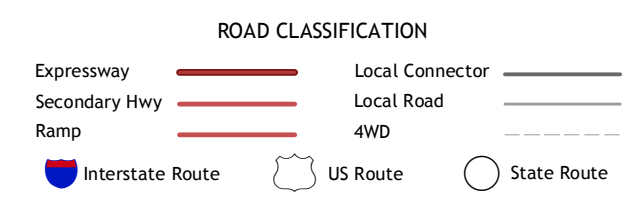


CONTOUR INTERVAL 20 FEET
 NORTH AMERICAN VERTICAL DATUM OF 1988
 This map was produced to conform with the
 National Geospatial Program US Topo Product Standard, 2011.
 A metadata file associated with this product is draft version 0.6.15



QUADRANGLE LOCATION

Santa Rosa Lake	Sacaton Draw	Cuevo
Santa Rosa	Sunshine Mesa	Harben Lake
Puerto Creek	Puerto De Luna	Fallon Ranch



SUNSHINE MESA, NM
2013

