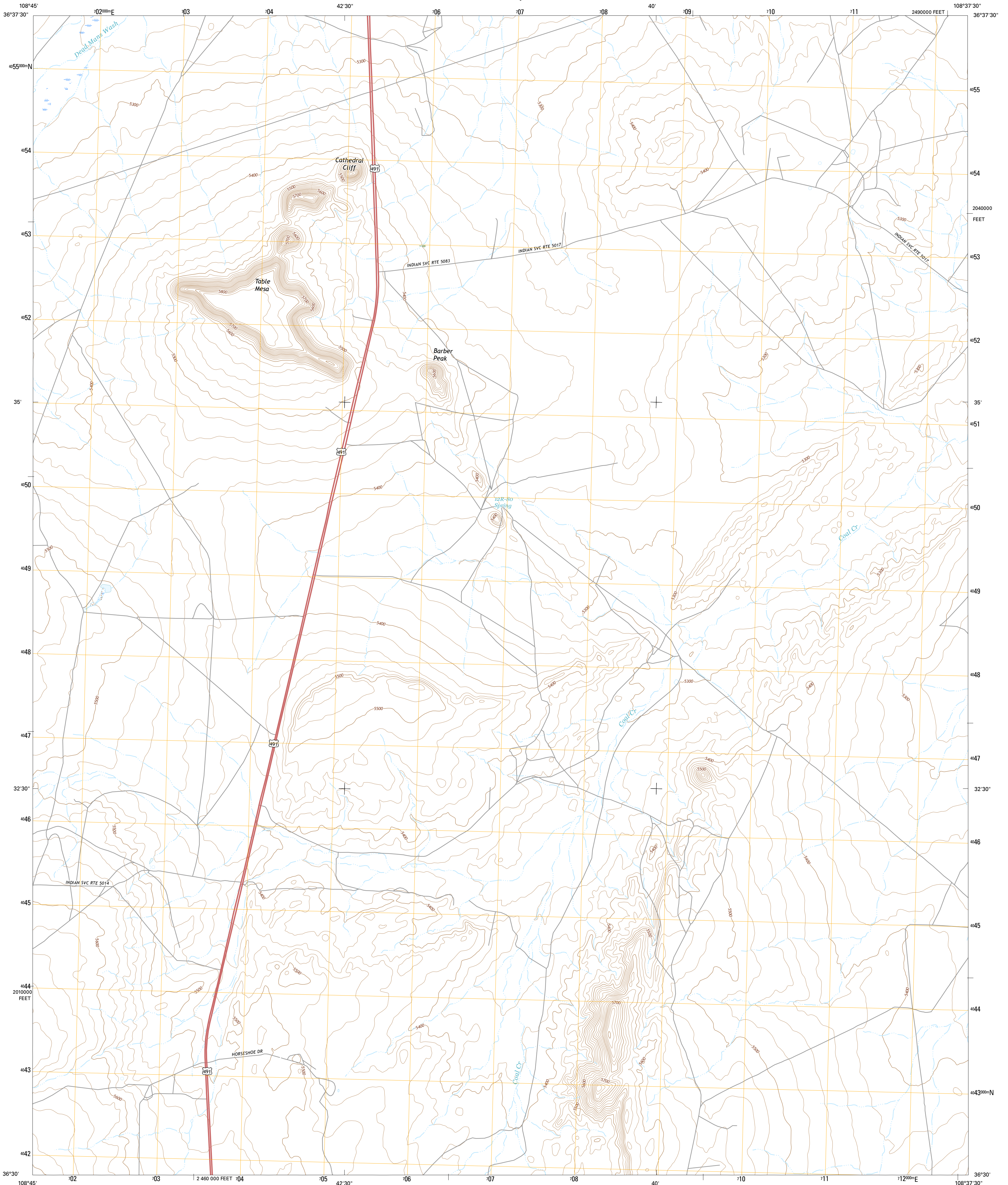




U.S. DEPARTMENT OF THE INTERIOR  
U.S. GEOLOGICAL SURVEY



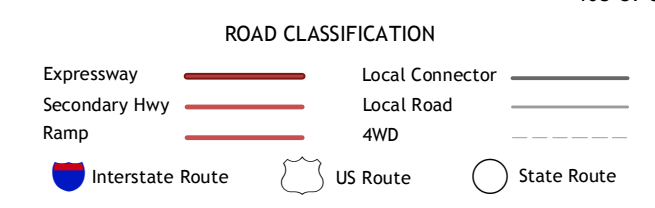
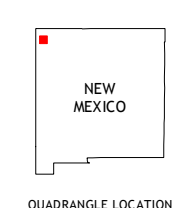
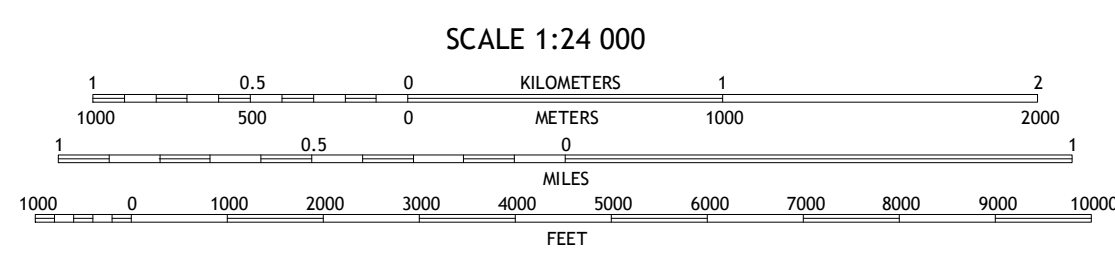
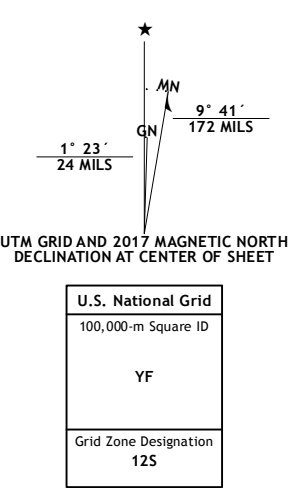
TABLE MESA QUADRANGLE  
NEW MEXICO-SAN JUAN CO.  
7.5-MINUTE SERIES



**Produced by the United States Geological Survey**  
 North American Datum of 1983 (NAD83)  
 North American Datum of 1983 (NAD83) Projection and  
 1 000-meter grid; Universal Transverse Mercator, Zone 12S  
 10 000-foot ticks; New Mexico Coordinate System of 1983 (west  
 zone)

This map is not a legal document. Boundaries may be  
 generalized for this map scale. Private lands within government  
 reservations may not be shown. Obtain permission before  
 entering private lands.

ImageTV.....N.A.I.P. September 2014  
 Roads.....U.S. Census Bureau, 2015 - 2016  
 Names.....GNIS, 2016  
 Hydrography.....National Hydrography Dataset, 2014  
 Contours.....National Elevation Dataset, 1999  
 Boundaries.....Multiple sources; see metadata file 1972 - 2016  
 Public Land Survey System.....BLM, 2016  
 Wetlands.....FWS National Wetlands Inventory 1977 - 2014



1	2	3
4	5	6
7	8	

ADJOINING QUADRANGLES

- 1 Ship Rock
- 2 Sulphur Spring
- 3 The Hogback North
- 4 Yellow Hill
- 5 The Hogback South
- 6 Sanostee East
- 7 Little Water
- 8 Newcomb NE

TABLE MESA, NM  
2017

