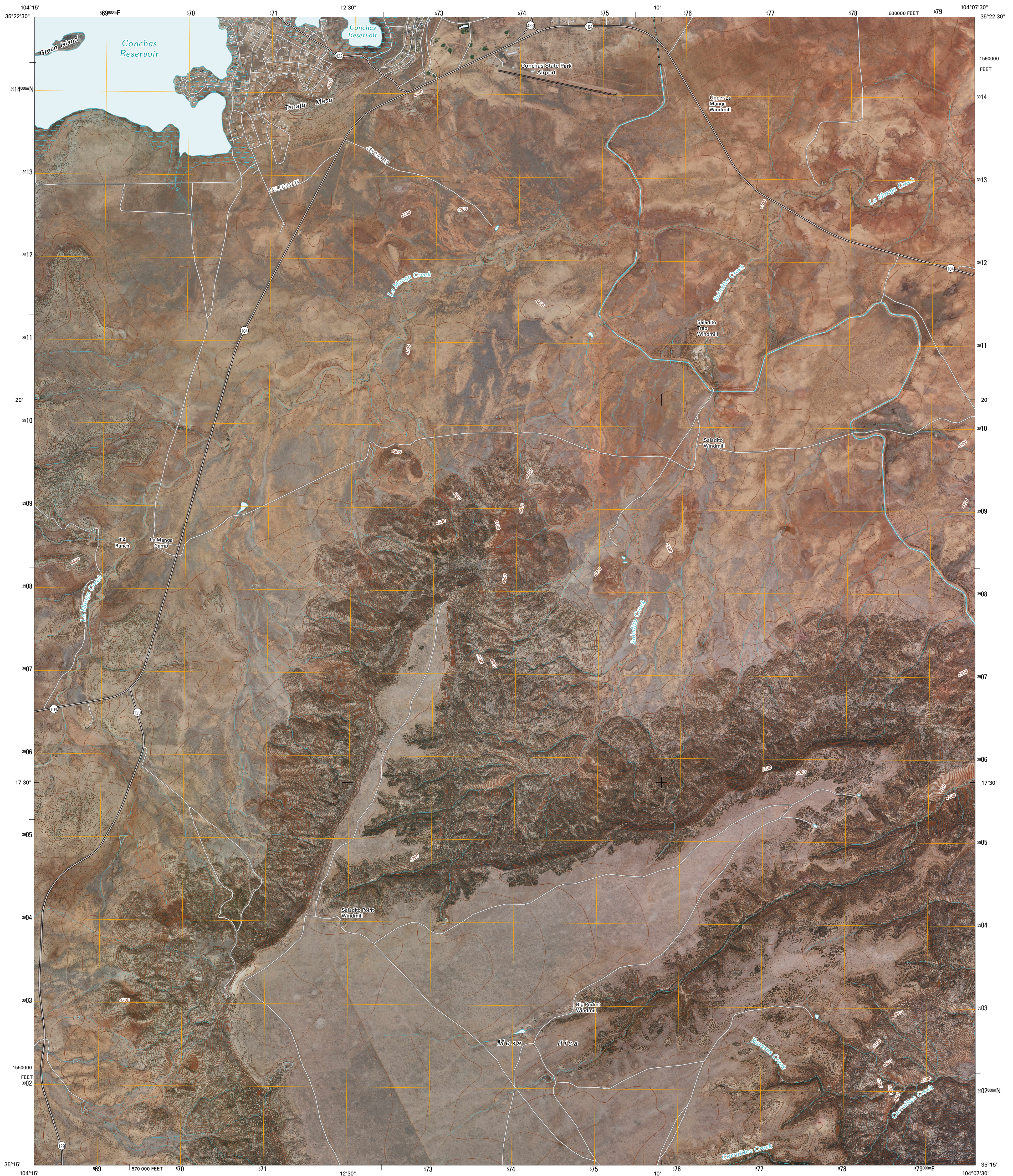




U.S. DEPARTMENT OF THE INTERIOR
U. S. GEOLOGICAL SURVEY

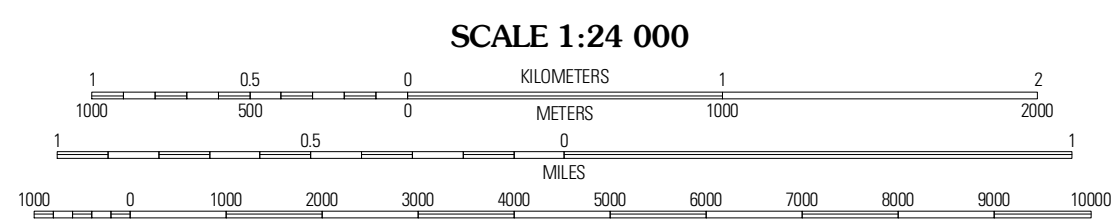
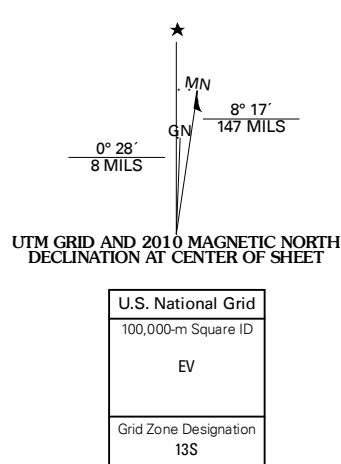


TENAJA MESA QUADRANGLE
NEW MEXICO
7.5-MINUTE SERIES

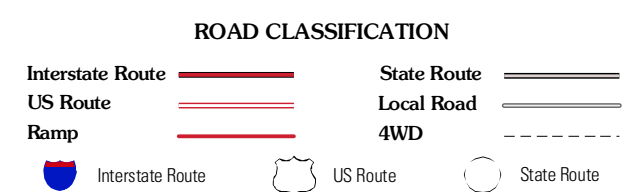
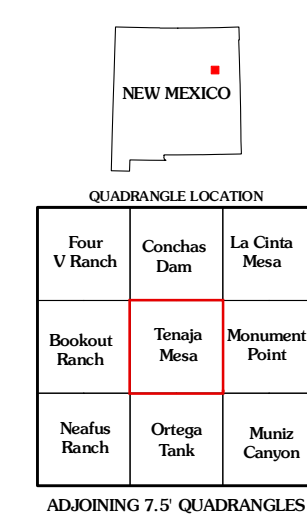


Produced by the United States Geological Survey
North American Datum of 1983 (NAD83)
Roads: ©2006-2010 Tele Atlas
World Geodetic System of 1984 (WGS84), Projection and
1 000-meter grid; Universal Transverse Mercator, Zone 13S
10 000-foot ticks; New Mexico Coordinate System of 1983
(east zone)

Imagery:.....NAIP, January 2005 - May 2009
Roads:.....©2006-2010 Tele Atlas
Names:.....©2006-2010 Tele Atlas
Hydrography:.....National Hydrography Dataset, 2005
Contours:.....National Elevation Dataset, 1998



CONTOUR INTERVAL 20 FEET
NORTH AMERICAN VERTICAL DATUM OF 1988
This map was produced to conform with version 0.5.10 of the
draft USGS Standards for 7.5-Minute Quadrangle Maps.
A metadata file associated with this product is draft version 0.5.11



TENAJA MESA, NM
2010