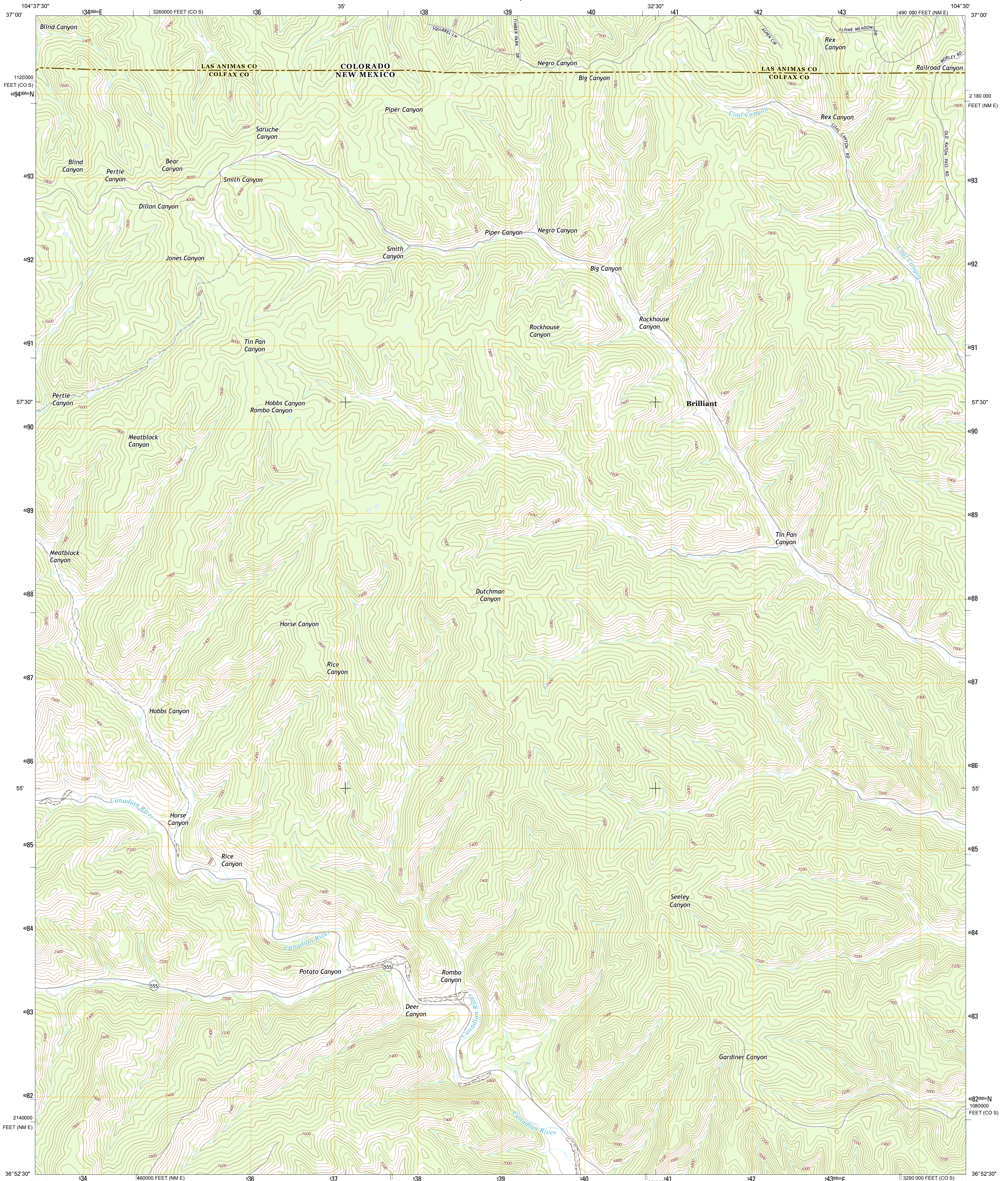




U.S. DEPARTMENT OF THE INTERIOR  
U. S. GEOLOGICAL SURVEY



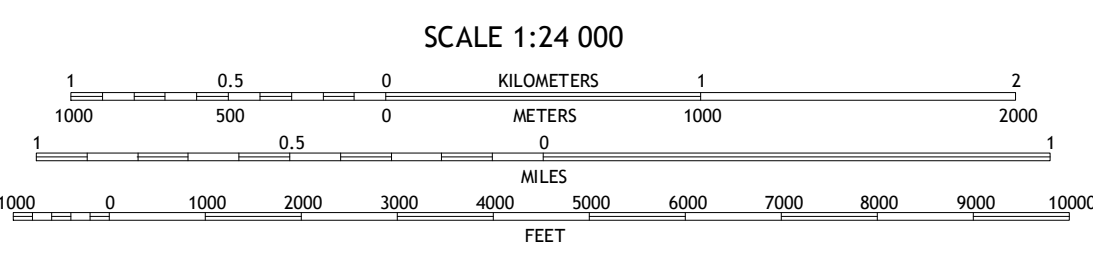
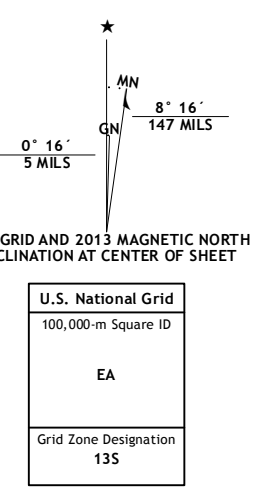
TIN PAN CANYON QUADRANGLE  
NEW MEXICO-COLORADO  
7.5-MINUTE SERIES



Produced by the United States Geological Survey  
North American Datum of 1983 (NAD83)  
World Geodetic System of 1984 (WGS84). Projection and  
1 000-meter grid: Universal Transverse Mercator, Zone 13S  
10 000-foot ticks: New Mexico Coordinate System of 1983 (east  
zone), Colorado Coordinate System of 1983 (south zone)

This map is not a legal document. Boundaries may be  
generalized for this map scale. Private lands within government  
reservations may not be shown. Obtain permission before  
entering private lands.

Imagery.....NAIP, May 2011  
Roads.....©2006-2013 TomTom  
Names.....GNIS, 2013  
Hydrography.....National Hydrography Dataset, 2011  
Contours.....National Elevation Dataset, 2002  
Boundaries.....Census, IBWC, IBC, USGS, 1972-2012  
Public Land Survey System.....BLM, 2011

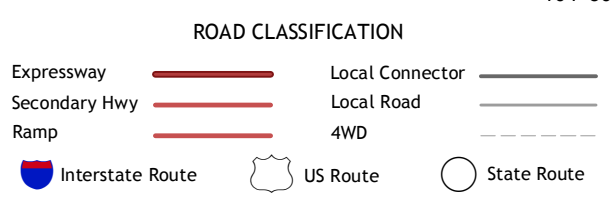


CONTOUR INTERVAL 40 FEET  
NORTH AMERICAN VERTICAL DATUM OF 1988

This map was produced to conform with the  
National Geospatial Program US Topo Product Standard, 2011.  
A metadata file associated with this product is draft version 0.6.15



Valdez	Starkville	Fishers Peak
McWilliams Canyon	Tin Pan Canyon	Raton
Curtis Camp	Red River Peak	Clifton House



TIN PAN CANYON, NM-CO  
2013



MSR REF NO. USGS 24K 4 516