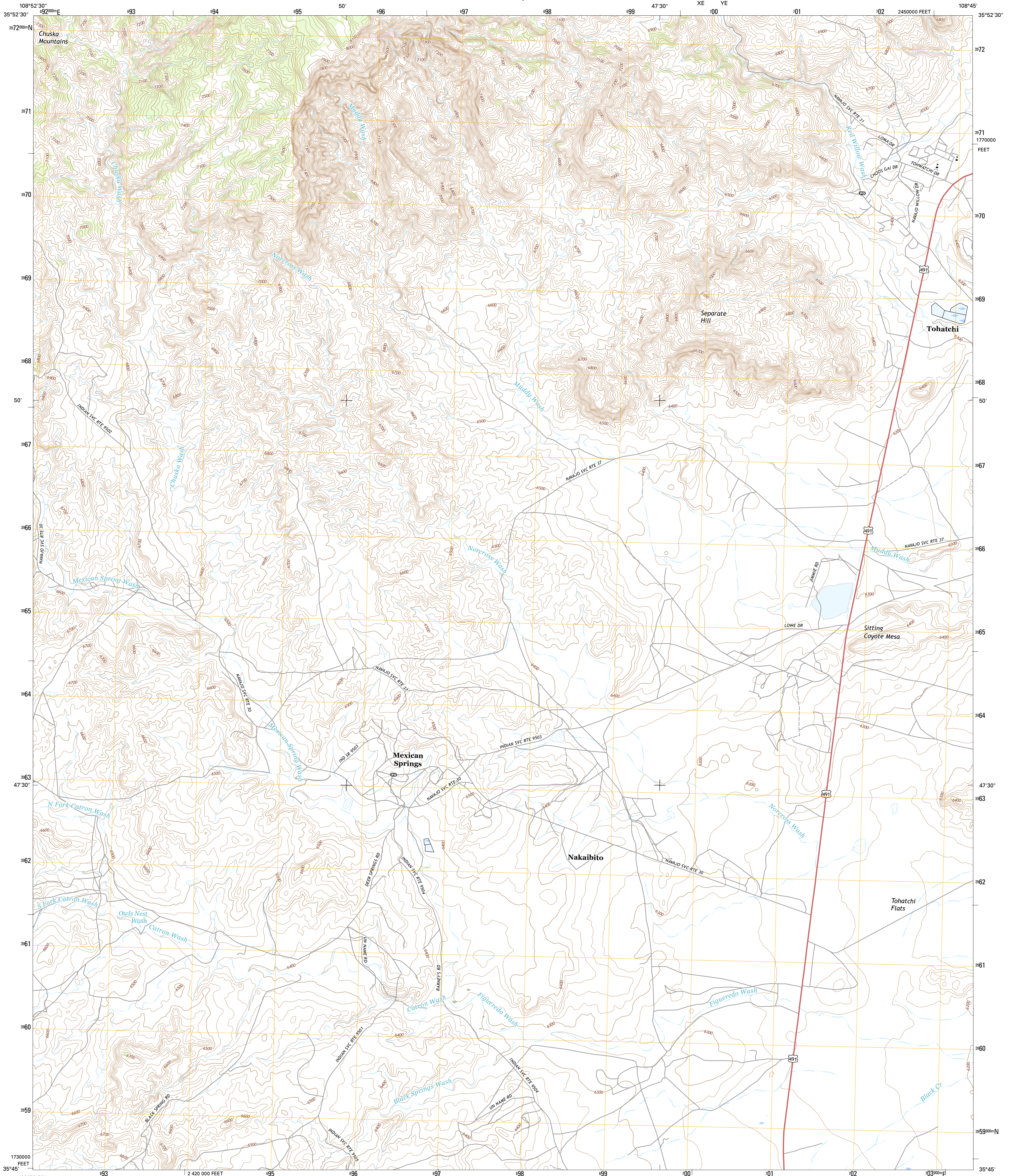




U.S. DEPARTMENT OF THE INTERIOR
U.S. GEOLOGICAL SURVEY



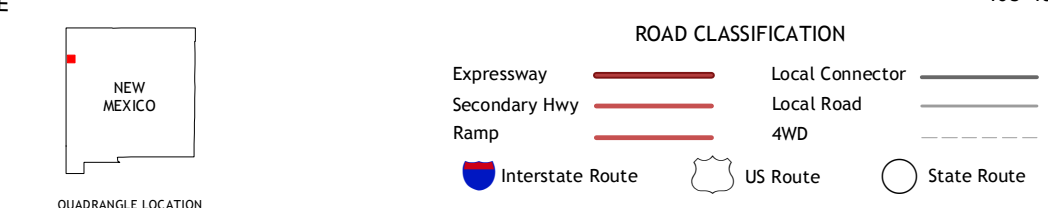
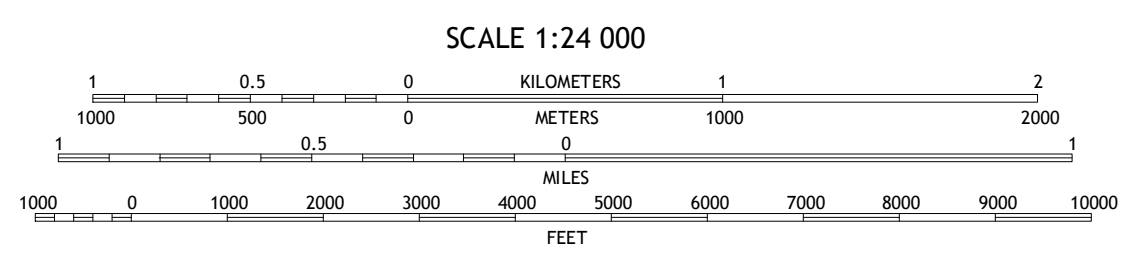
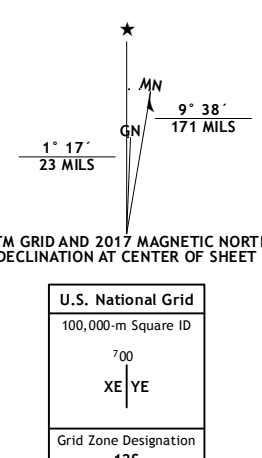
TOHATCHI QUADRANGLE
NEW MEXICO-MCKINLEY CO.
7.5-MINUTE SERIES



Produced by the United States Geological Survey
 North American Datum of 1983 (NAD83)
 World Geodetic System of 1984 (WGS84) Projection and
 1 000-meter grid: Universal Transverse Mercator, Zone 12S
 10 000-foot ticks: New Mexico Coordinate System of 1983 (west
 zone)

This map is not a legal document. Boundaries may be
 generalized for this map scale. Private lands within government
 reservations may not be shown. Obtain permission before
 entering private lands.

Imagery.....NAIP.....September 2014
 Roads.....U.S. Census Bureau 2015 2016
 Names.....GNIS.....2016
 Hydrography.....National Hydrography Dataset 2014
 Contours.....National Elevation Dataset 1999
 Boundaries.....Multiple sources; see metadata file 1972-2016
 Public Land Survey System.....BLM 2016
 Wetlands.....FWS National Wetlands Inventory 1977-2014



ADJOINING QUADRANGLES

1	2	3
4	5	6
7	8	

- 1 Todito Park
- 2 Chuska Peak
- 3 Coyote Canyon NW
- 4 Crevasse Canyon
- 5 Chuska Lake
- 6 The Bonita School
- 7 Twin Lakes
- 8 Big Rock Hill

TOHATCHI, NM
2017

