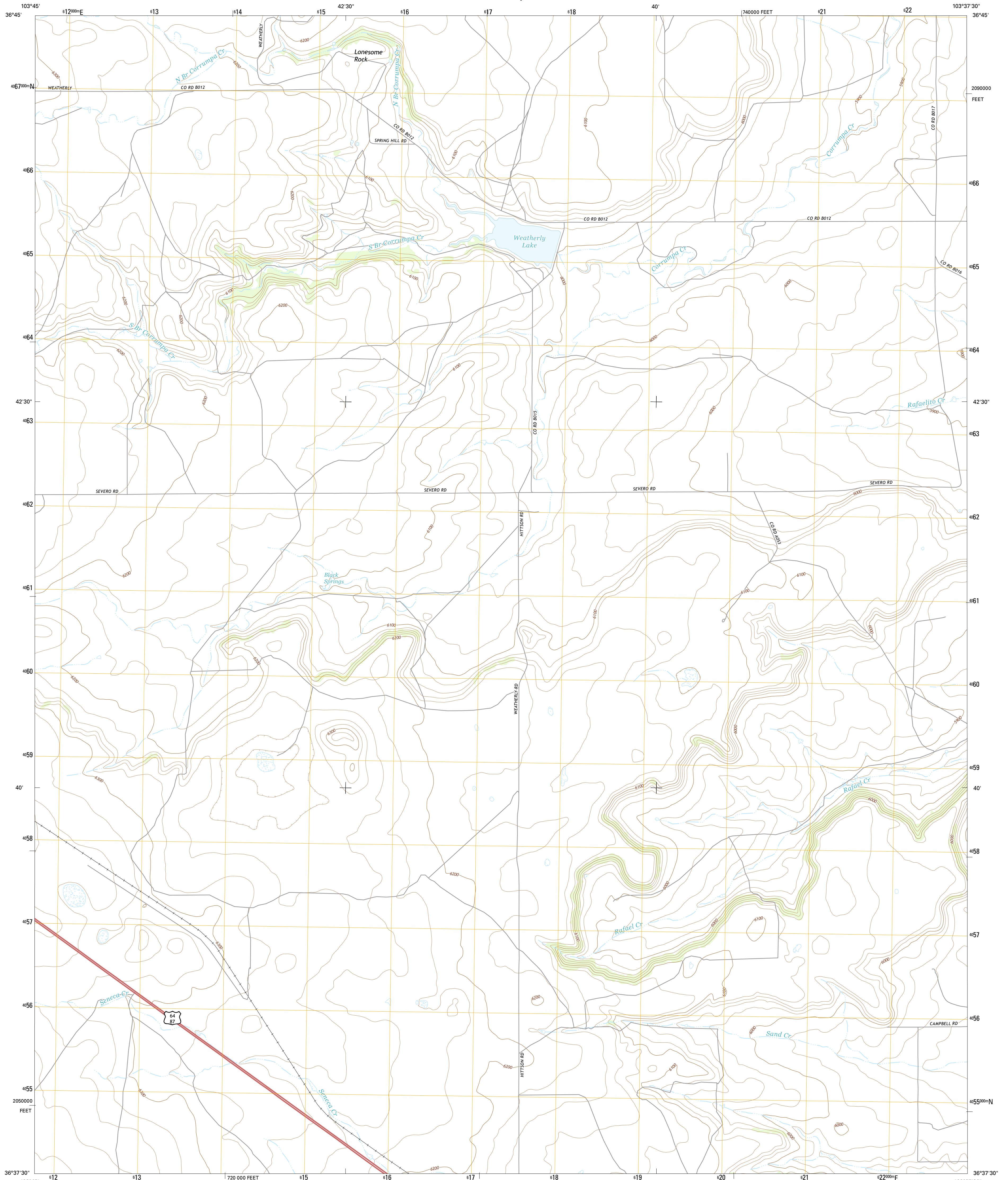




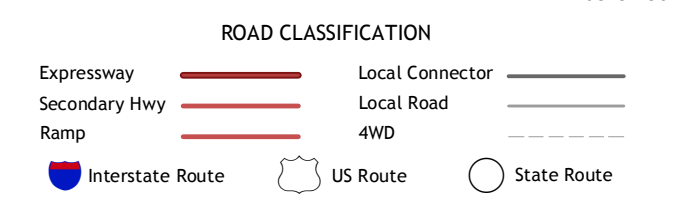
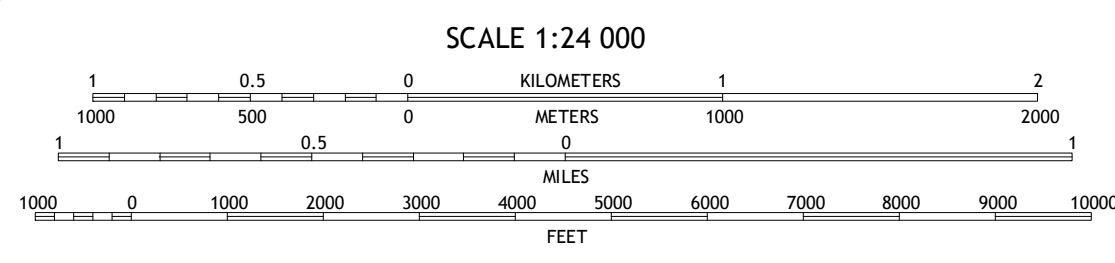
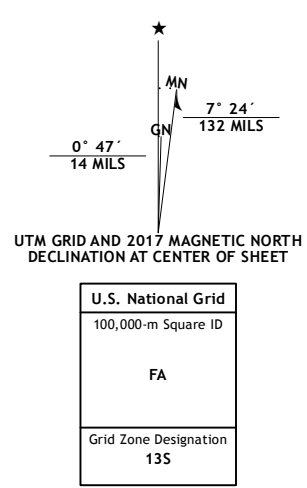
U.S. DEPARTMENT OF THE INTERIOR  
U.S. GEOLOGICAL SURVEY



WEATHERLY LAKE QUADRANGLE  
NEW MEXICO-UNION CO.  
7.5-MINUTE SERIES



**Produced by the United States Geological Survey**  
 North American Datum of 1983 (NAD83)  
 World Geodetic System of 1984 (WGS84), Projection and  
 1 000-foot ticks: New Mexico Coordinate System of 1983 (east zone)  
 This map is not a legal document. Boundaries may be  
 generalized for this map scale. Private lands within government  
 reservations may not be shown. Obtain permission before  
 entering private lands.  
 Imagery: NIP, October 2014  
 Roads: U.S. Census Bureau, 2015-2016  
 Names: GNIS, 2016  
 Hydrography: National Hydrography Dataset, 2014  
 Contours: National Elevation Dataset, 2002  
 Boundaries: Multiple sources; see metadata file 1972-2016  
 Public Land Survey System: BLM, 2016  
 Wetlands: FWS National Wetlands Inventory 1977-2014



1	2	3
4	5	6
7	8	

ADJOINING QUADRANGLES

- 1 Des Moines
- 2 Cross L Ranch SW
- 3 Fidler Springs
- 4 Little Grande
- 5 Blind Gap
- 6 Cow Mountain
- 7 Grenville SW
- 8 Grenville

WEATHERLY LAKE, NM  
2017

