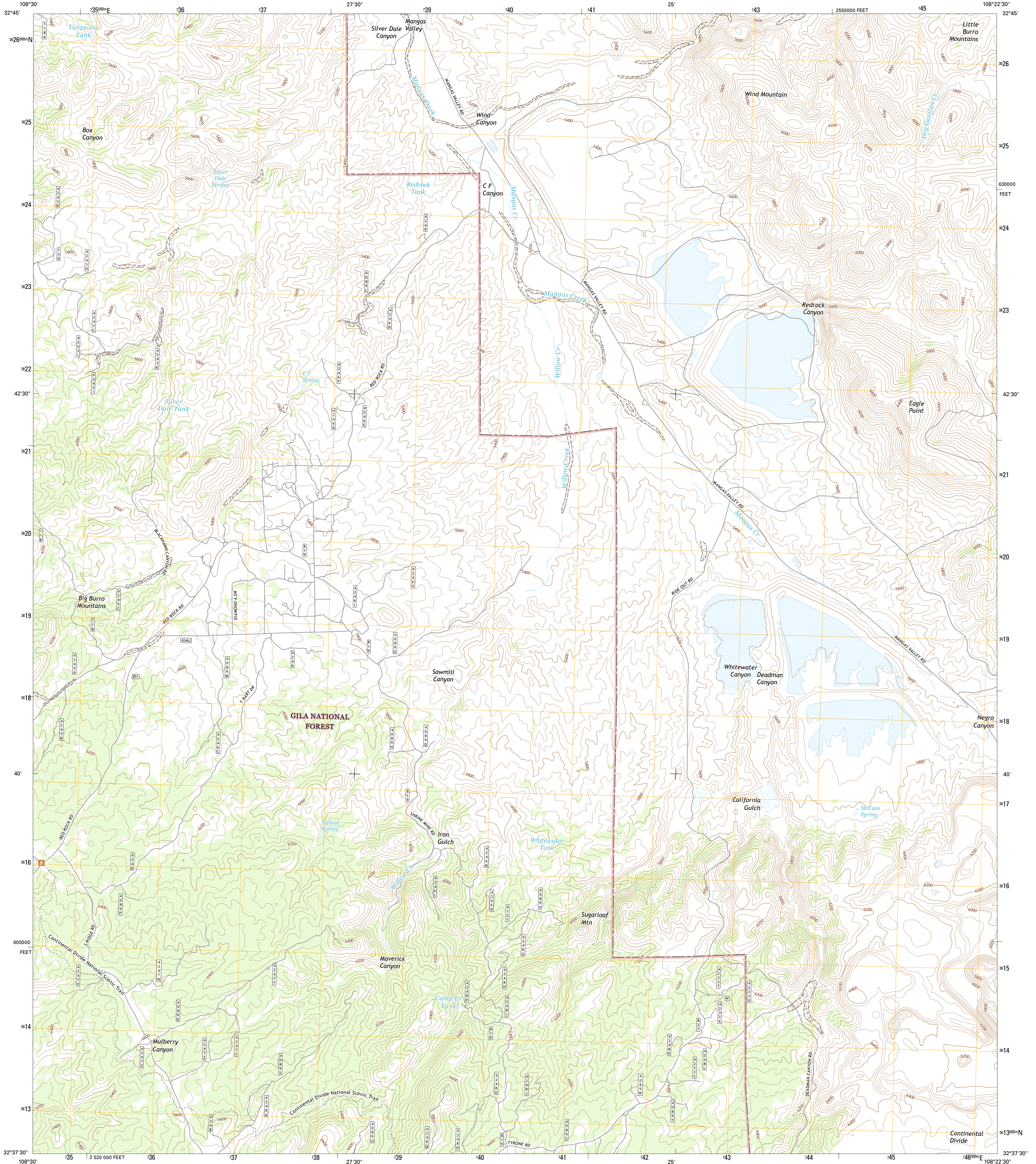




U.S. DEPARTMENT OF THE INTERIOR  
U.S. GEOLOGICAL SURVEY



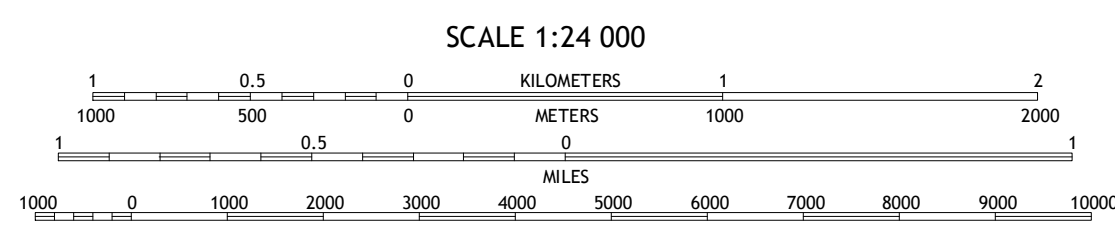
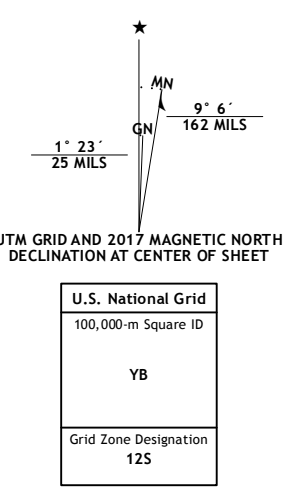
WIND MOUNTAIN QUADRANGLE  
NEW MEXICO-GRANT CO.  
7.5-MINUTE SERIES



Produced by the United States Geological Survey  
North American Datum of 1983 (NAD83)  
World Geodetic System of 1984 (WGS84). Projection and  
1 000-meter grid: Universal Transverse Mercator, Zone 12S  
10 000-foot ticks: New Mexico Coordinate System of 1983 (west  
zone)

This map is not a legal document. Boundaries may be  
generalized for this map scale. Private lands within government  
reservations may not be shown. Obtain permission before  
entering private lands.

Imagery: N.A.I.P., October 2014  
Roads: U.S. Census Bureau, 2015 2016  
Roads within US Forest Service Lands: FSTopo Data  
with limited Forest Service updates, 2012-2016  
Names: GNIS, 2016  
Hydrography: National Hydrography Dataset, 2014  
Contours: National Elevation Dataset, 2001  
Boundaries: Multiple sources; see metadata file 1977-2016  
Public Land Survey System: BLM, 2016  
Wetlands: FWS National Wetlands Inventory 1977-2014



CONTOUR INTERVAL 40 FEET  
NORTH AMERICAN VERTICAL DATUM OF 1988

This map was produced to conform with the  
National Geospatial Program US Topo Product Standard, 2011.  
A metadata file associated with this product is draft version 0.6.19

NEW MEXICO

QUADRANGLE LOCATION

1	2	3
4	5	6
7	8	

ADJOINING QUADRANGLES

1 Mangas Springs  
2 Circle Mesa  
3 Silver City  
4 Bullard Peak  
5 Tyrone  
6 Eagle Eye Peak  
7 Burro Peak  
8 White Signal

ROAD CLASSIFICATION

- Expressway
- Secondary Hwy
- Ramp
- Interstate Route
- FS Primary Route
- Local Connector
- Local Road
- 4WD
- US Route
- FS Passenger Route
- FS High Clearance Route
- State Route

Check with local Forest Service unit  
for current travel conditions and restrictions.

WIND MOUNTAIN, NM  
2017

