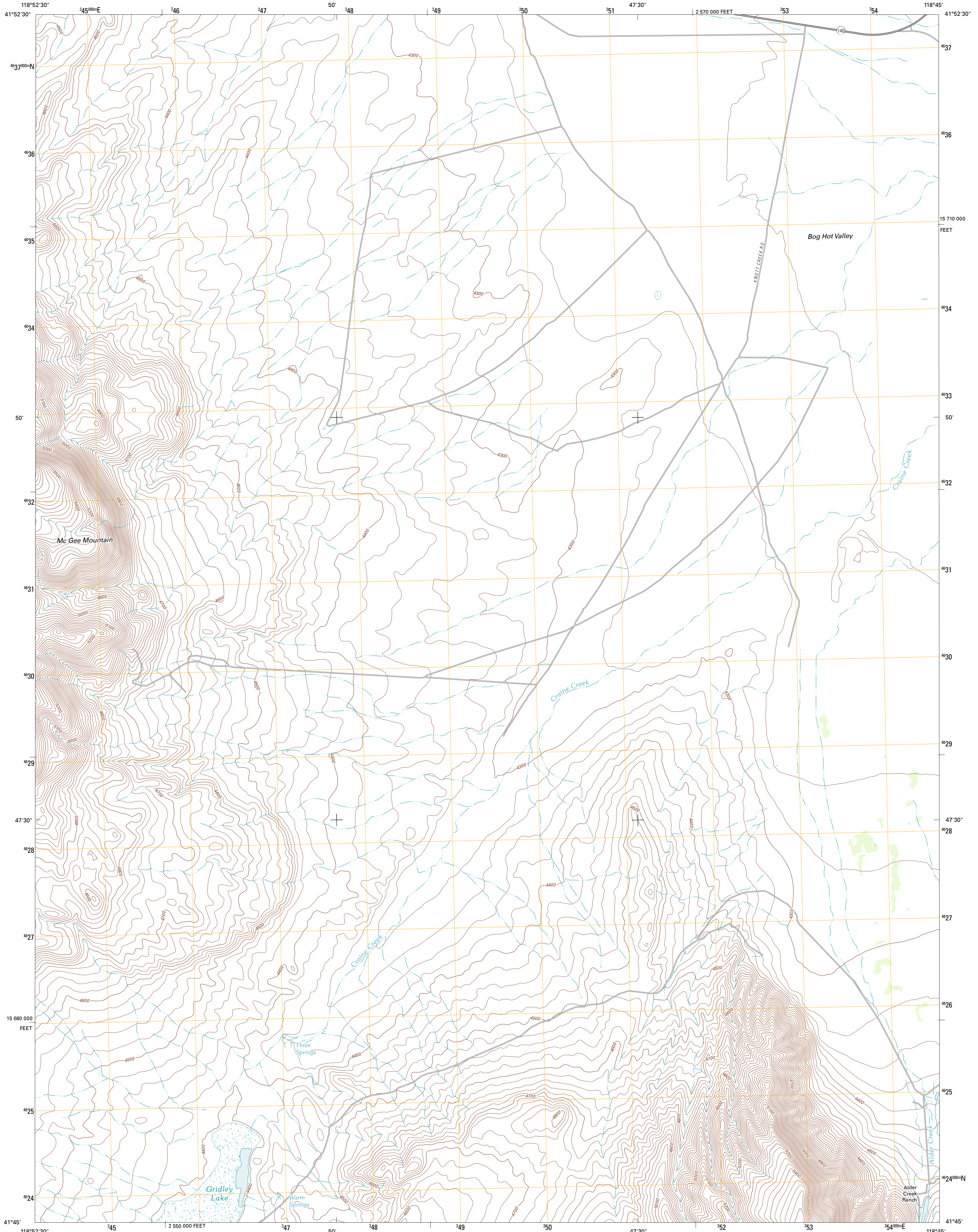




U.S. DEPARTMENT OF THE INTERIOR
U. S. GEOLOGICAL SURVEY

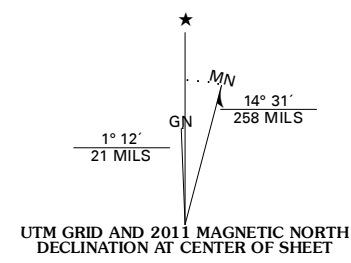


ALDER CREEK RANCH QUADRANGLE
NEVADA-HUMBOLDT CO.
7.5-MINUTE SERIES

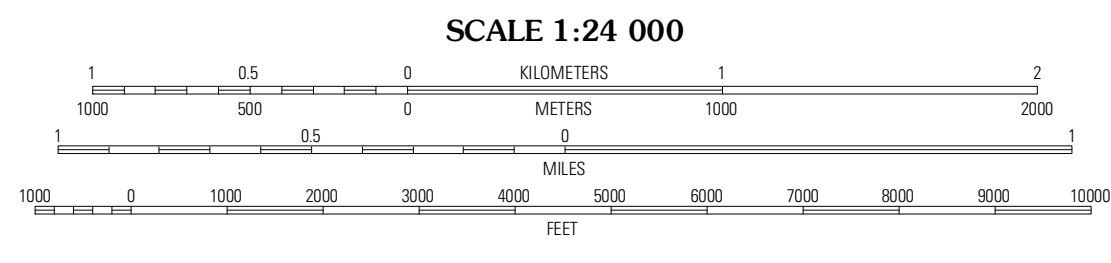


Produced by the United States Geological Survey
North American Datum of 1983 (NAD83)
World Geodetic System of 1984 (WGS84). Projection and
1 000-meter grid: Universal Transverse Mercator, Zone 11T
10 000-foot ticks: Nevada Coordinate System of 1983 (west
zone)

Imagery.....NAIP, June 2010
Roads.....©2006-2011 TomTom
Names.....©2006-2011 TomTom
Hydrography.....National Hydrography Dataset, 2010
Contours.....National Elevation Dataset, 2001
Boundaries.....Census, IBWC, IBC, USGS, 1972 - 2010



| |
|-----------------------|
| U.S. National Grid |
| 100,000-ft Square ID |
| 1G |
| Grid Zone Designation |
| 11T |



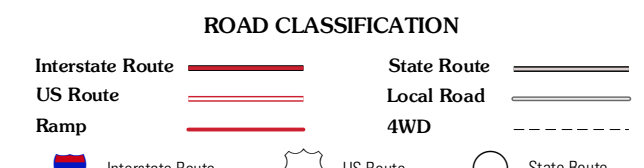
This map was produced to conform with the
National Geospatial Program US Topo Product Standard, 2011.
A metadata file associated with this product is draft version 0.6.1



QUADRANGLE LOCATION

| | | |
|----------------------------|-------------------------|---------------------|
| Thousand Creek Gorge | Bog Hot Springs | Denio |
| McGhee Mountain | Alder Creek Ranch | Vicksburg Canyon |
| Knott Creek Ranch | Knott Creek | Duffer Peak |

ADJOINING 7.5' QUADRANGLES



ALDER CREEK RANCH, NV
2011