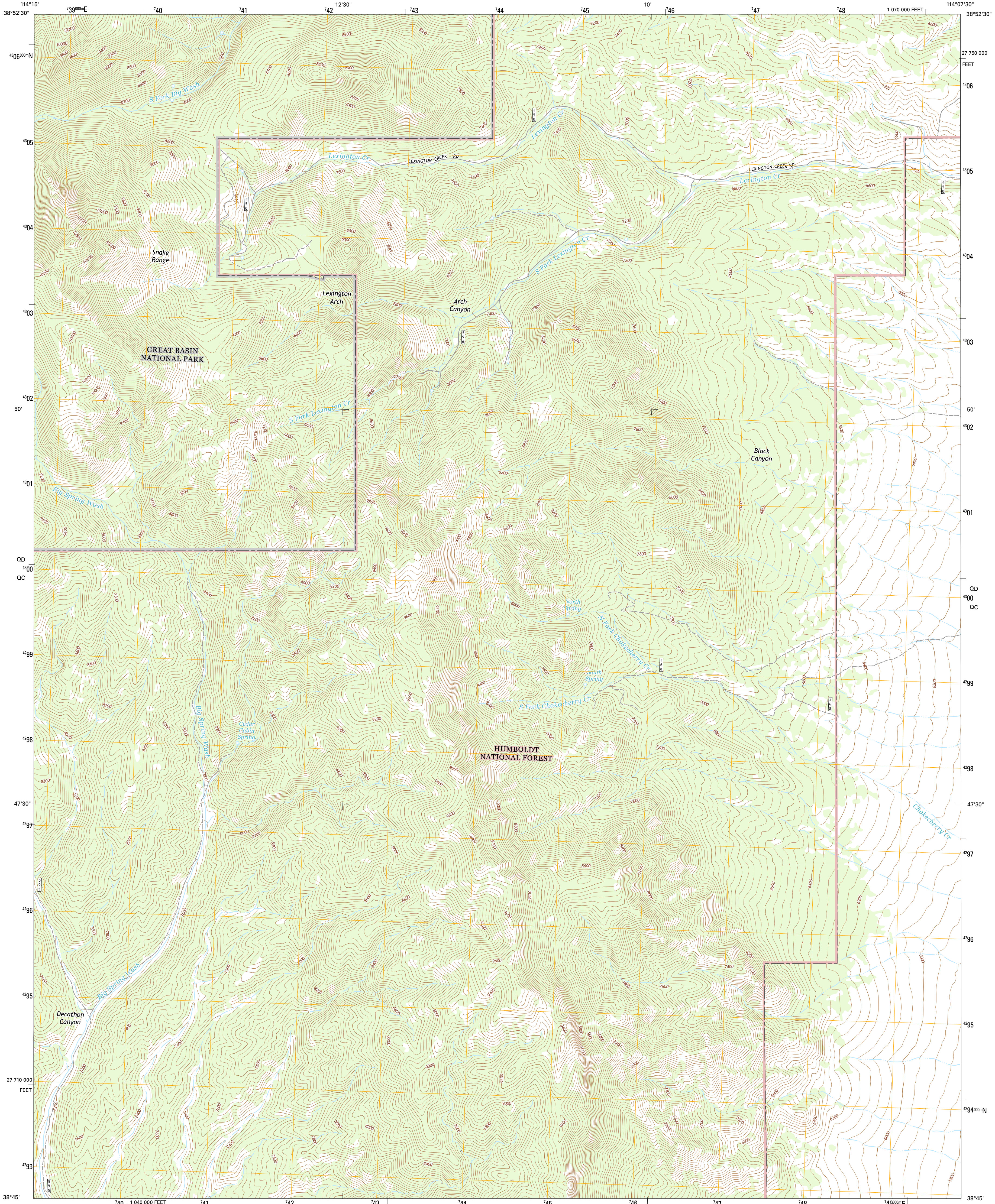




U.S. DEPARTMENT OF THE INTERIOR
U.S. GEOLOGICAL SURVEY



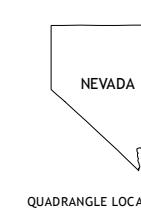
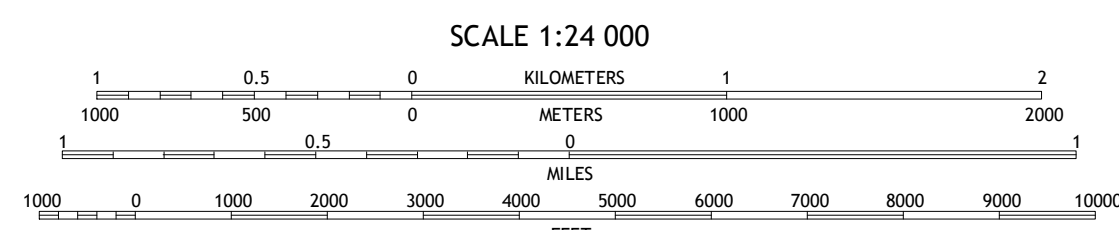
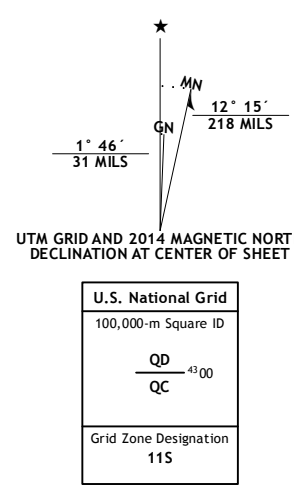
ARCH CANYON QUADRANGLE
NEVADA-WHITE PINE CO.
7.5-MINUTE SERIES



Produced by the United States Geological Survey
North American Datum of 1983 (NAD83)
World Geodetic System of 1984 (WGS84). Projection and
1000-meter grid: Universal Transverse Mercator, Zone 11S
10 000-foot ticks: Nevada Coordinate System of 1983 (east zone)

This map is not a legal document. Boundaries may be
generalized for this map scale. Private lands within government
reservations may not be shown. Obtain permission before
entering private lands.

Imagery: N.A.I.P., August 2013
Roads: HERE, ©2013
Roads within US Forest Service Lands: FSTopo Data
with limited Forest Service updates, 2013
Names: OHIS, 2013
Hydrography: National Hydrography Dataset, 2013
Contours: National Elevation Dataset, 2001
Boundaries: Multiple sources; see metadata file 1972 - 2014
Public Land Survey System: BLM, 2011



ROAD CLASSIFICATION	
Expressway	Local Connector
Secondary Hwy	Local Road
Ramp	4WD
Interstate Route	US Route
FS Primary Route	FS Passenger Route
	FS High Clearance Route
	State Route

Check with local Forest Service unit
for current travel conditions and restrictions.

1	2	3
4	5	6
7	8	

ADJOINING QUADRANGLES

- 1 Wheeler Peak
- 2 Kious Spring
- 3 Garrison
- 4 Minnera Canyon
- 5 Needles Point Spring
- 6 Red Ledges
- 7 Big Springs
- 8 Tweezy Wash

ARCH CANYON, NV
2014

