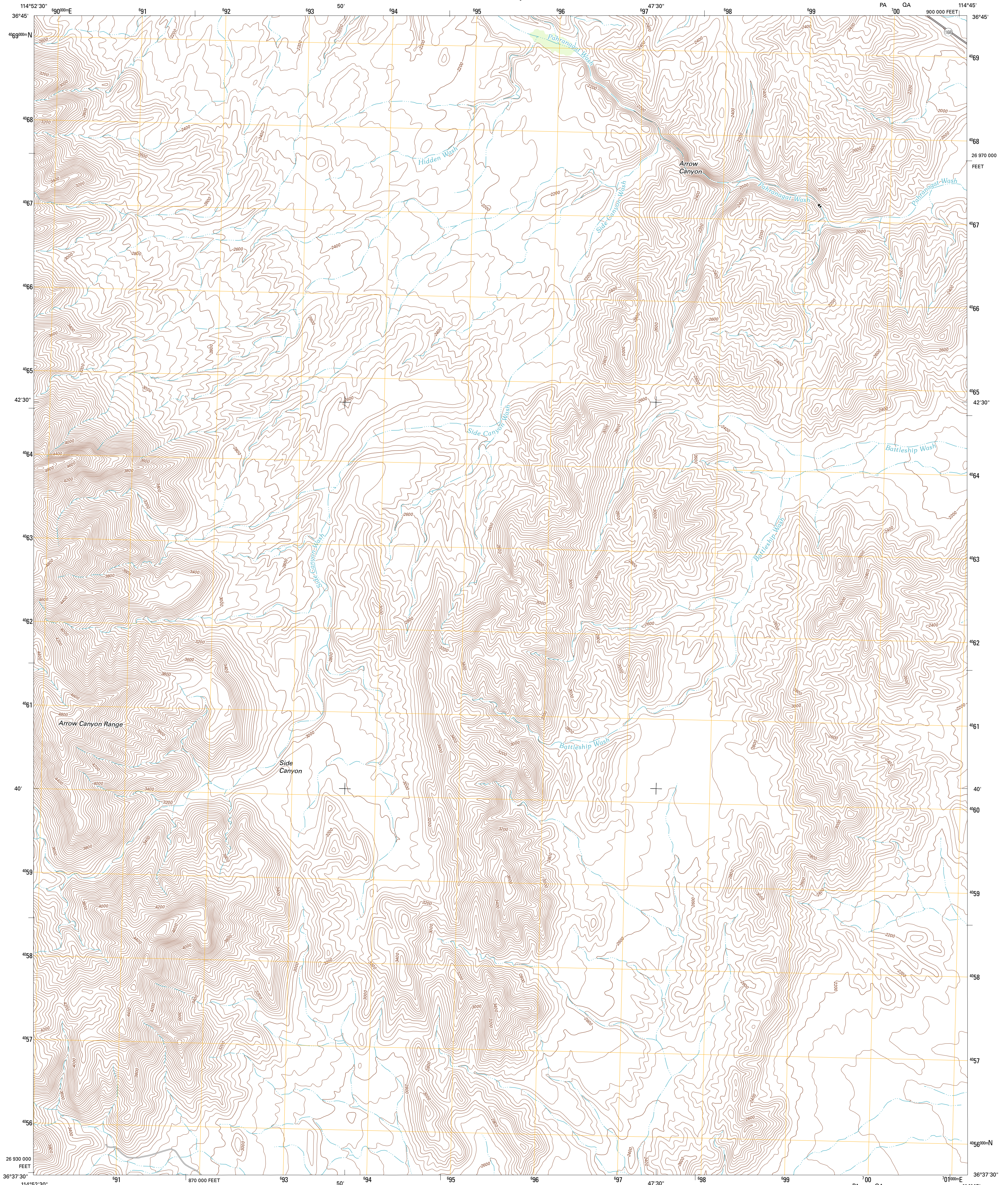




U.S. DEPARTMENT OF THE INTERIOR
U. S. GEOLOGICAL SURVEY

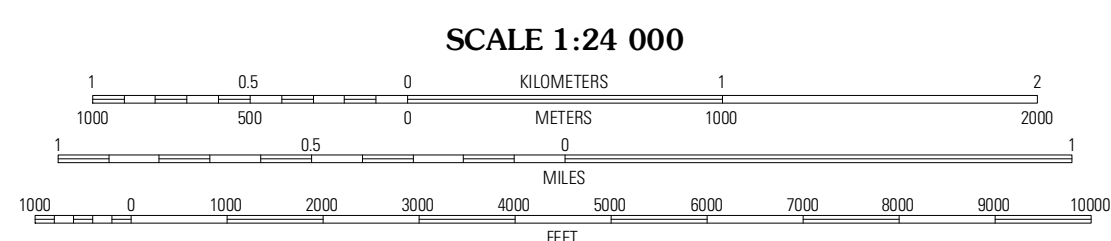
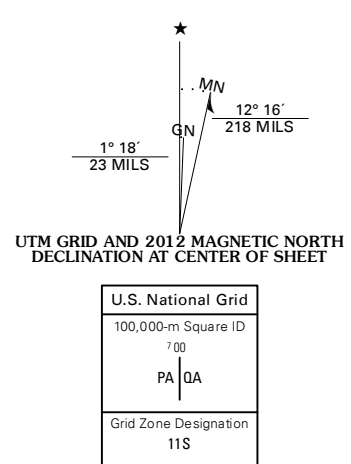


ARROW CANYON QUADRANGLE
NEVADA-CLARK CO.
7.5-MINUTE SERIES

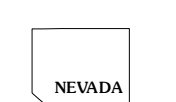


Produced by the United States Geological Survey
North American Datum of 1983 (NAD83)
World Geodetic System of 1984 (WGS84) Projection and
1 000-meter grid; Universal Transverse Mercator, Zone 11S
10 000-foot ticks; Nevada Coordinate System of 1983 (east zone)

Imagery.....NAIP, May 2010 - July 2010
Roads.....©2006-2011 TomTom
Names.....GNIS, 2011
Hydrography.....National Hydrography Dataset, 2010
Contours.....National Elevation Dataset, 2001
Boundaries.....Census, IBWC, IBC, USGS, 1972 - 2010



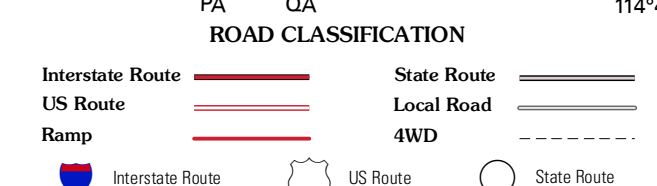
CONTOUR INTERVAL 40 FEET
NORTH AMERICAN VERTICAL DATUM OF 1988
This map was produced to conform with the
National Geospatial Program US Topo Product Standard, 2011.
A metadata file associated with this product is draft version 0.6.1



QUADRANGLE LOCATION

Wildcat Wash SW	Wildcat Wash SE	Fairier
Arrow Canyon NW	Arrow Canyon	Moapa West
Arrow Canyon SW	Arrow Canyon SE	Ute

ADJOINING 7.5' QUADRANGLES



ARROW CANYON, NV
2012