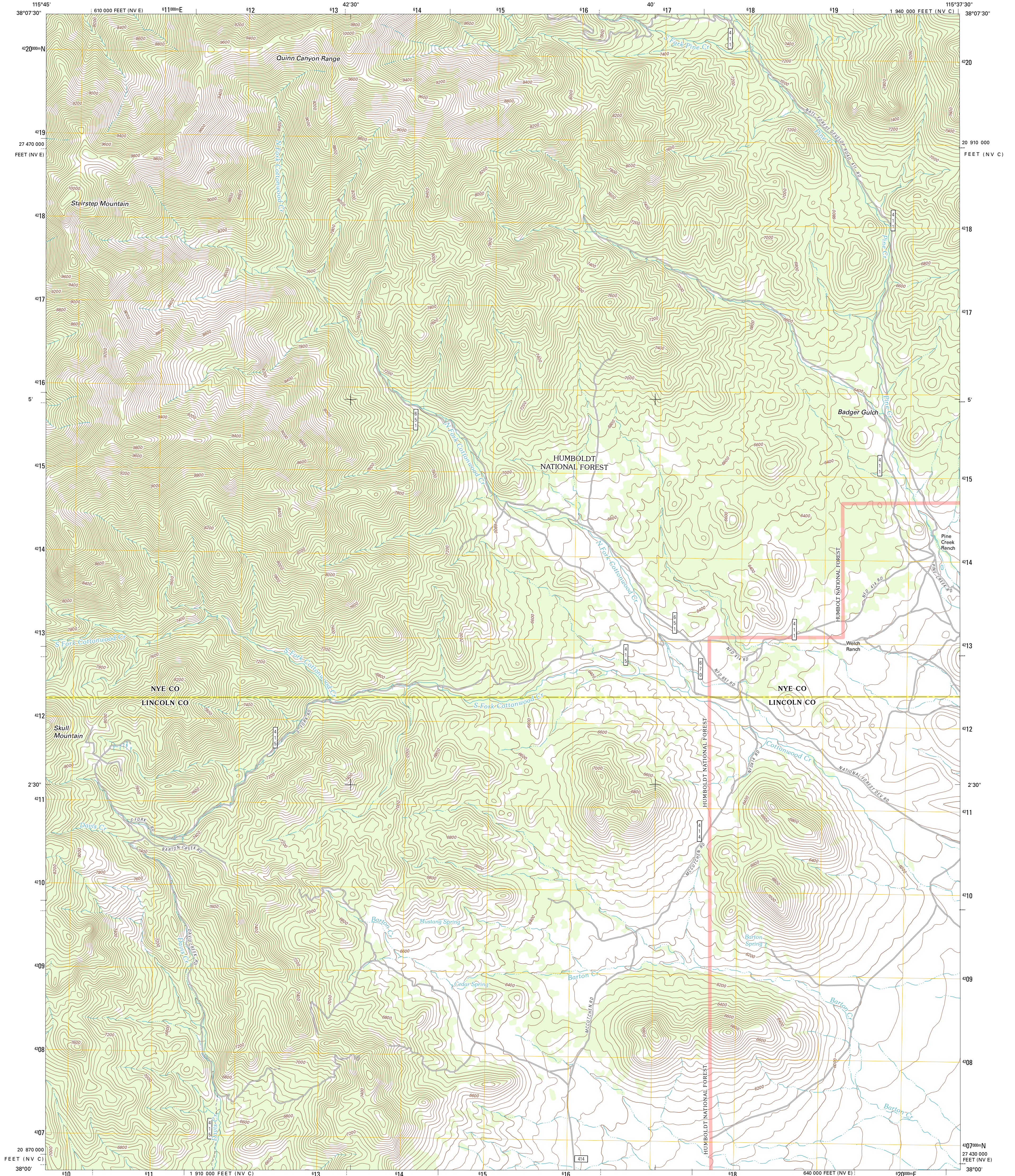




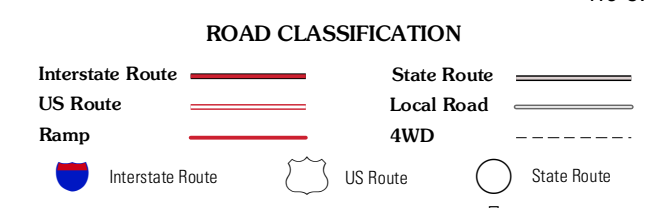
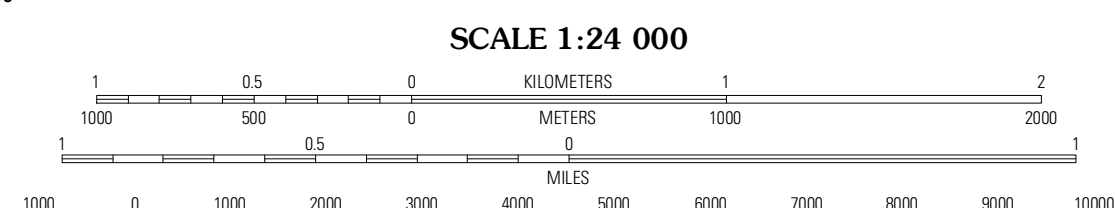
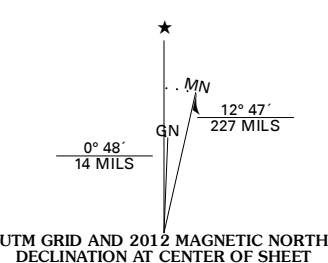
U.S. DEPARTMENT OF THE INTERIOR  
U. S. GEOLOGICAL SURVEY



BADGER GULCH QUADRANGLE  
NEVADA  
7.5-MINUTE SERIES



Produced by the United States Geological Survey  
North American Datum of 1983 (NAD83)  
World Geodetic System of 1984 (WGS84) Projection and  
1 000-meter grid: Universal Transverse Mercator, Zone 11S  
10 000-foot ticks: Nevada Coordinate System of 1983  
(central and east zones)



QUADRANGLE LOCATION

Big Creek Ranch	Nyala	Adaven
Goat Ranch Springs	Badger Gulch	Wadsworth Ranch
Quinn Canyon Springs	McCutchen Spring	Worthington Peak

ADJOINING 7.5 QUADRANGLES

Imagery: NADP, July 2010  
Roads: 02/2006-2011 TomTom  
Roads within US Forest Service Lands: FSTopo Data with limited Forest Service updates, 2009  
Names: GNIS, 2011  
Hydrography: National Hydrography Dataset, 2010  
Contours: National Elevation Dataset, 2004  
Boundaries: Census, IBWC, IBC, USGS, 1972 - 2010

CONTOUR INTERVAL 40 FEET  
NORTH AMERICAN VERTICAL DATUM OF 1988

This map was produced to conform with the National Geospatial Program US Topo Product Standard, 2011. A metadata file associated with this product is draft version 0.6.1

Check with local Forest Service unit for current travel conditions and restrictions.

BADGER GULCH, NV  
2012