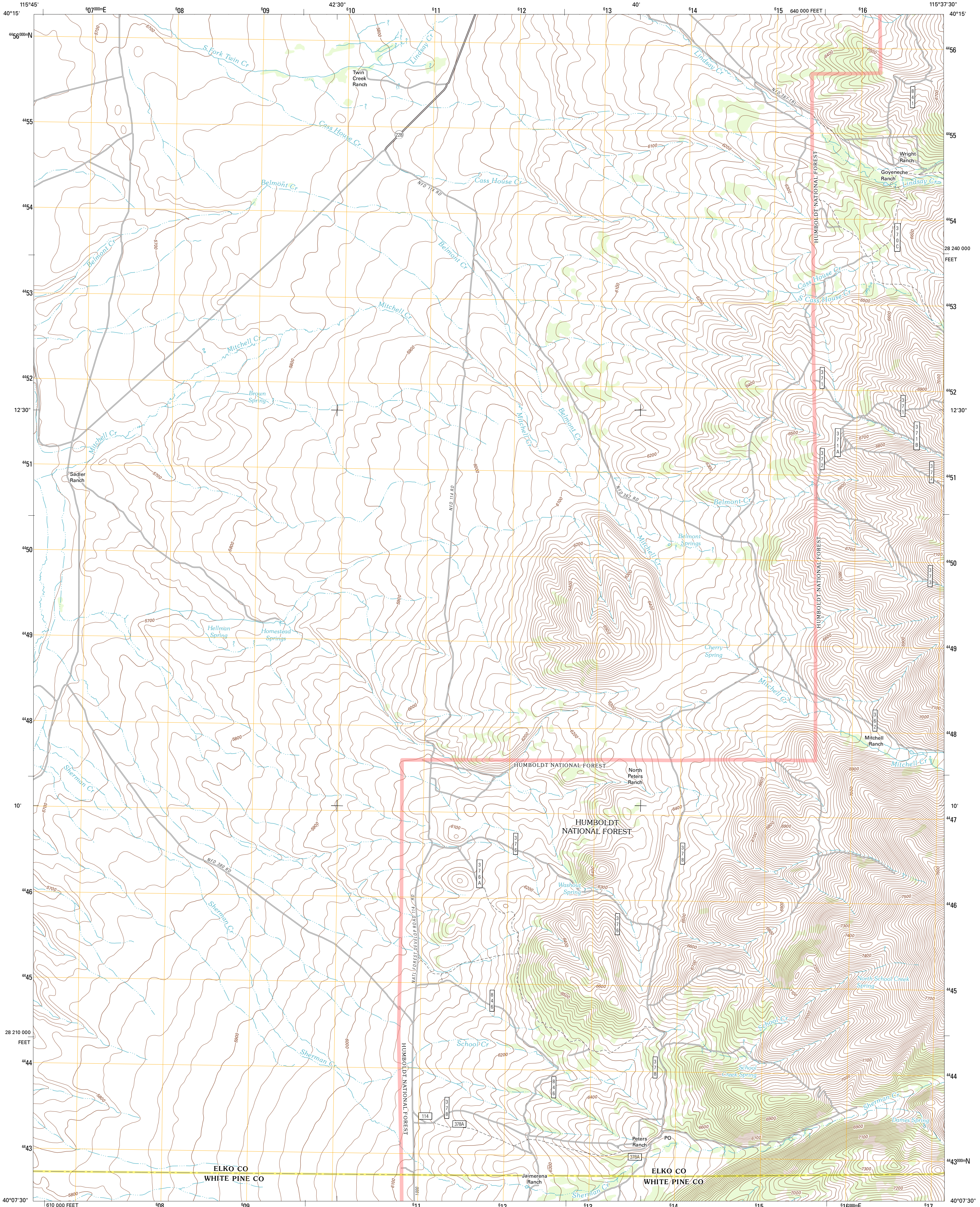




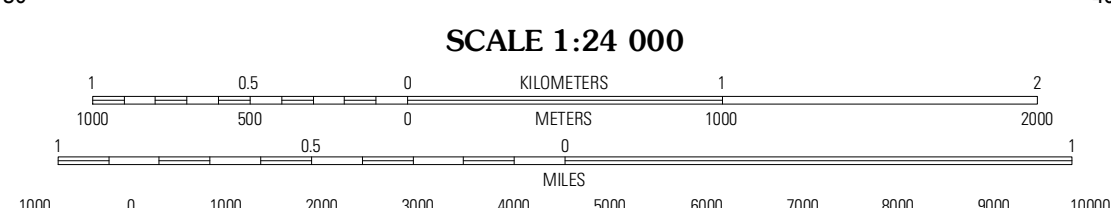
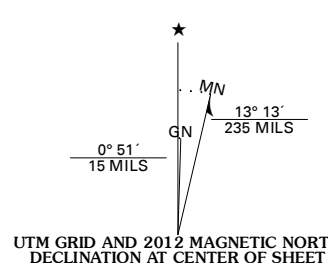
U.S. DEPARTMENT OF THE INTERIOR
U. S. GEOLOGICAL SURVEY



BELMONT CREEK QUADRANGLE
NEVADA
7.5-MINUTE SERIES



Produced by the United States Geological Survey
North American Datum of 1983 (NAD83)
World Geodetic System of 1984 (WGS84). Projection and
1 000-meter grid: Universal Transverse Mercator, Zone 11T
10 000-foot ticks: Nevada Coordinate System of 1983 (east
zone)

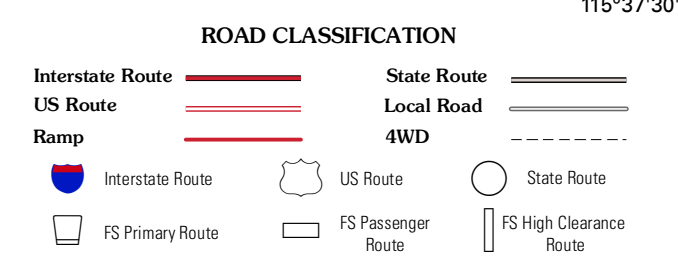
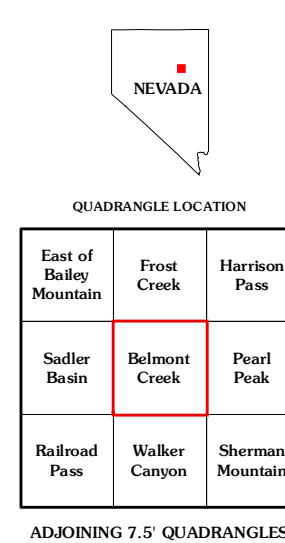


CONTOUR INTERVAL 20 FEET
NORTH AMERICAN VERTICAL DATUM OF 1988

This map was produced to conform with the
National Geospatial Program US Topo Product Standard, 2011.
A metadata file associated with this product is draft version 0.6.1

Imagery:.....N.A.P., July 2010
Roads:.....©2006-2011 TomTom
Roads within US Forest Service Lands
with limited Forest Service updates, 2009
Names:.....GNIS, 2011
Hydrography:.....National Hydrography Dataset, 2010
Contours:.....National Elevation Dataset, 1999
Boundaries:.....Census, BWC, BIC, USGS, 1972 - 2010

U.S. National Grid
100,000m Square ID
FE
Grid Zone Designation
11T



Check with local Forest Service unit
for current travel conditions and restrictions.

BELMONT CREEK, NV
2012

QUADRANGLE LOCATION		
East of Bailey Mountain	Frost Creek	Harrison Pass
Sadler Basin	Belmont Creek	Pearl Peak
Railroad Pass	Walker Canyon	Sherman Mountain

ADJOINING 7.5' QUADRANGLES