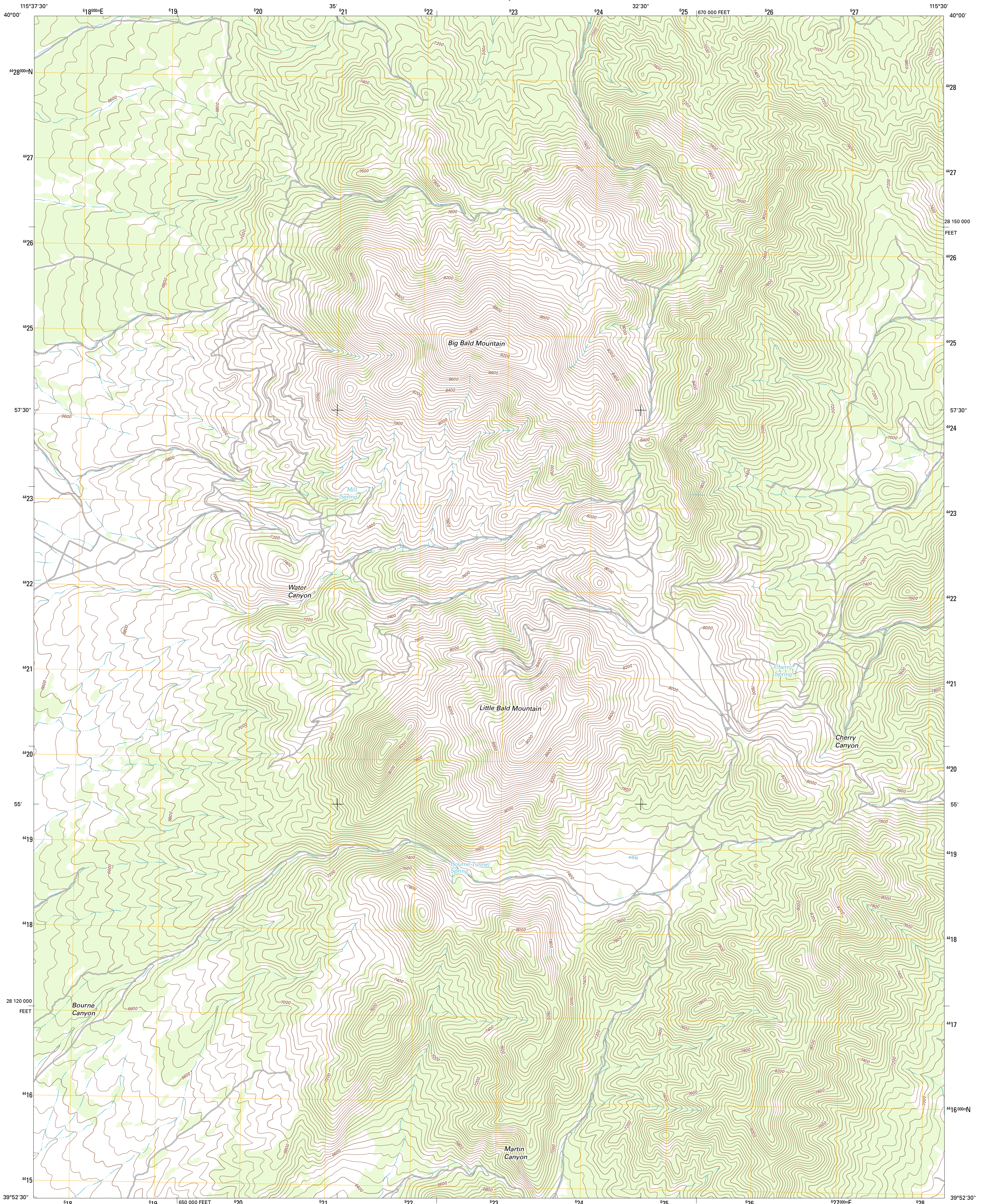




U.S. DEPARTMENT OF THE INTERIOR  
U. S. GEOLOGICAL SURVEY

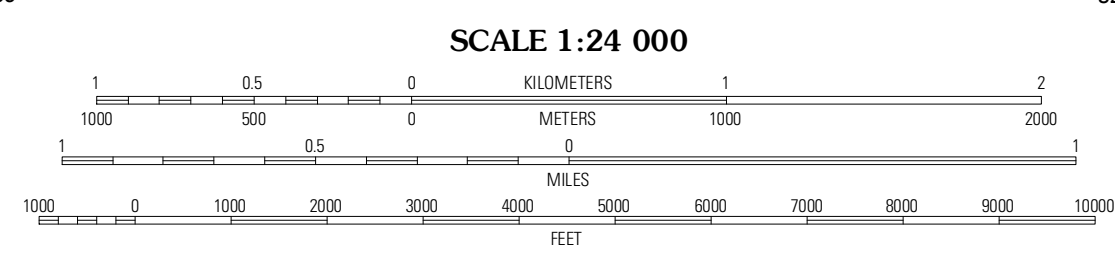
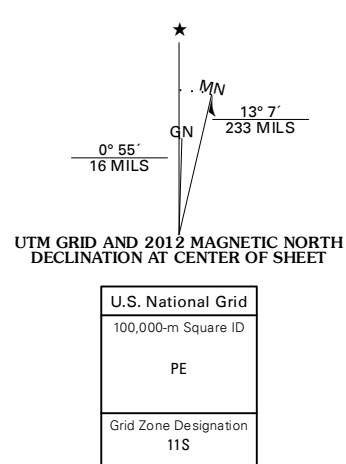


BIG BALD MOUNTAIN QUADRANGLE  
NEVADA-WHITE PINE CO.  
7.5-MINUTE SERIES

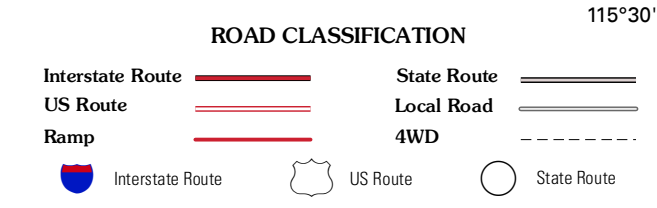


Produced by the United States Geological Survey  
North American Datum of 1983 (NAD83)  
World Geodetic System of 1984 (WGS84). Projection and  
1 000-meter grid: Universal Transverse Mercator, Zone 11S  
10 000-foot ticks: Nevada Coordinate System of 1983 (east zone)

Imagery.....NAP, June 2010 - July 2010  
Roads.....©2006-2011, TomTom  
Names.....GNSS, 2011  
Hydrography.....National Hydrography Dataset, 2010  
Contours.....National Elevation Dataset, 1999  
Boundaries.....Census, IBWC, IBC, USGS, 1972 - 2010



CONTOUR INTERVAL 40 FEET  
NORTH AMERICAN VERTICAL DATUM OF 1988  
This map was produced to conform with the  
National Geospatial Program US Topo Product Standard, 2011.  
A metadata file associated with this product is draft version 0.6.1



QUADRANGLE LOCATION

Walker Canyon	Sherman Mountain	Station Butte
Cold Creek Ranch NW	<b>Big Bald Mountain</b>	Topini Spring
Cold Creek Ranch	Mooney Basin Summit	Long Valley Slough

BIG BALD MOUNTAIN, NV  
2012

ADJOINING 7.5 QUADRANGLES