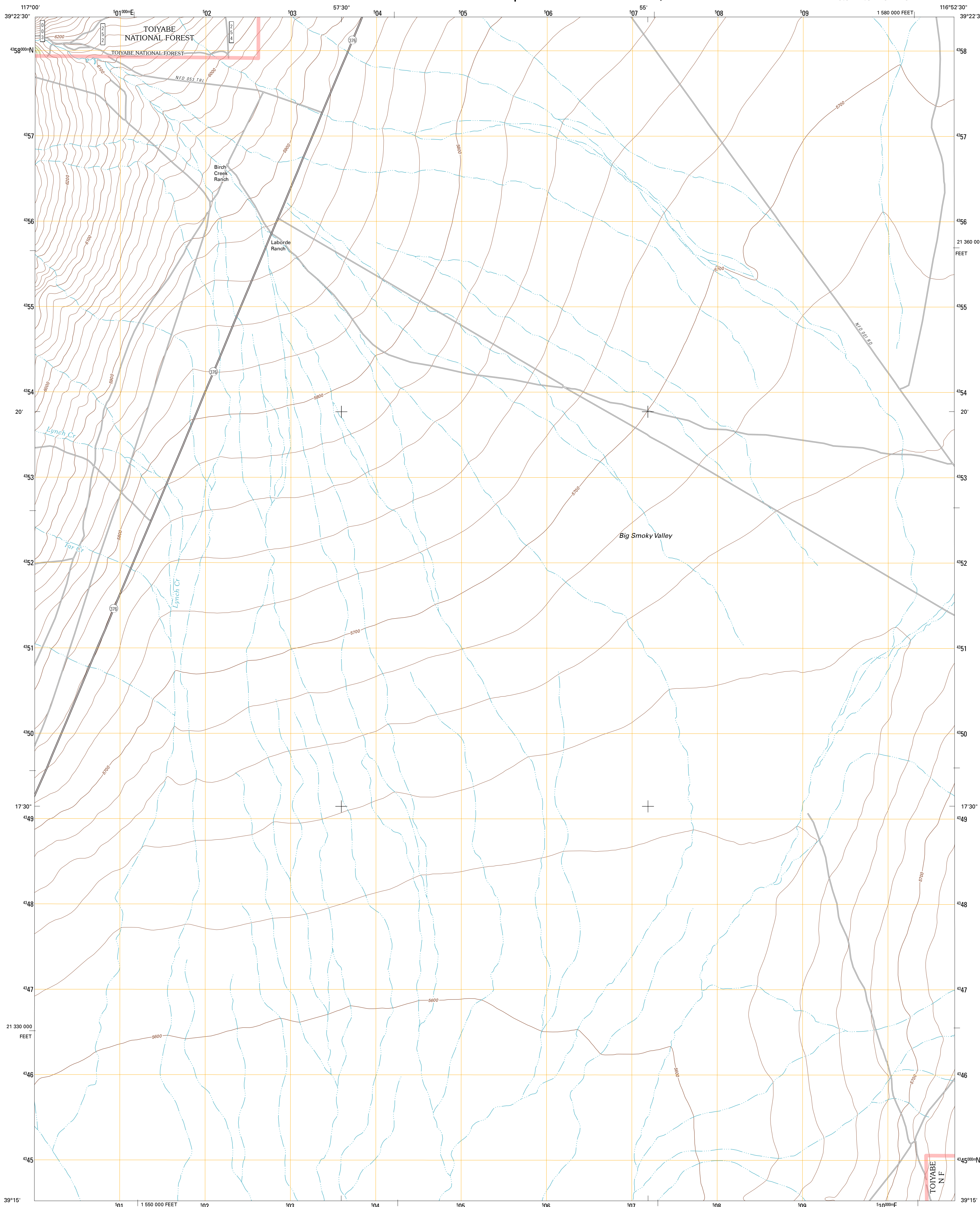




U.S. DEPARTMENT OF THE INTERIOR
U. S. GEOLOGICAL SURVEY

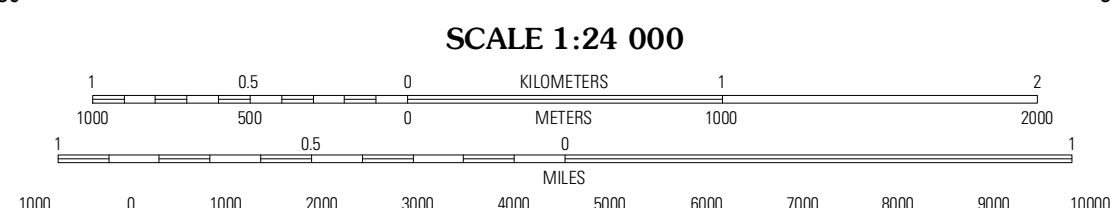
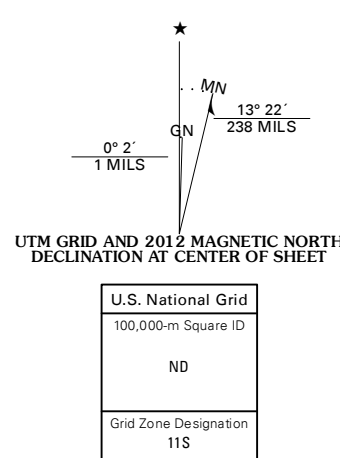


BIRCH CREEK RANCH QUADRANGLE
NEVADA-LANDER CO.
7.5-MINUTE SERIES

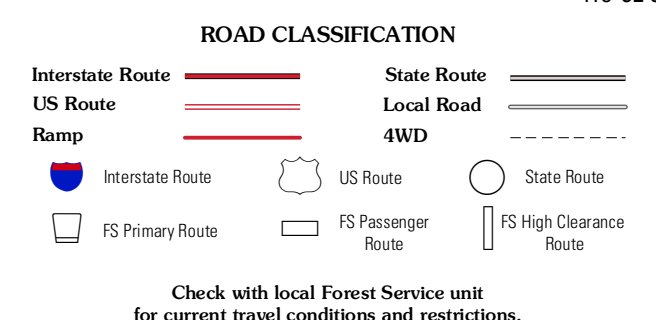
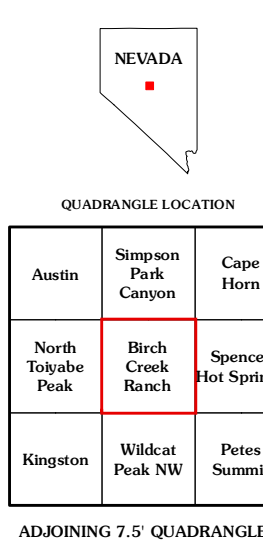


Produced by the United States Geological Survey
North American Datum of 1983 (NAD83)
World Geodetic System of 1984 (WGS84). Projection and
1 000-meter grid: Universal Transverse Mercator, Zone 11S
10 000-foot ticks: Nevada Coordinate System of 1983
(central zone)

Imagery: N.A.I.P., June 2010
Roads: ©2006-2011, TomTom
Roads within US Forest Service Lands: FS Topo Data
with limited Forest Service updates, 2009
Names: GNIS, 2011
Hydrography: National Hydrography Dataset, 2010
Contours: National Elevation Dataset, 2004
Boundaries: Census, IBWC, IBC, USGS, 1972 - 2010



CONTOUR INTERVAL 20 FEET
NORTH AMERICAN VERTICAL DATUM OF 1988
This map was produced to conform with the
National Geospatial Program US Topo Product Standard, 2011.
A metadata file associated with this product is draft version 0.6.1



Check with local Forest Service unit
for current travel conditions and restrictions.

BIRCH CREEK RANCH, NV
2012

QUADRANGLE LOCATION

Austin	Simpson Peak Canyon	Cape Horn
North Toiyabe Peak	Birch Creek Ranch	Spencer Hot Springs
Kingston	Wildcat Peak NW	Petes Summit

ADJOINING 7.5' QUADRANGLES