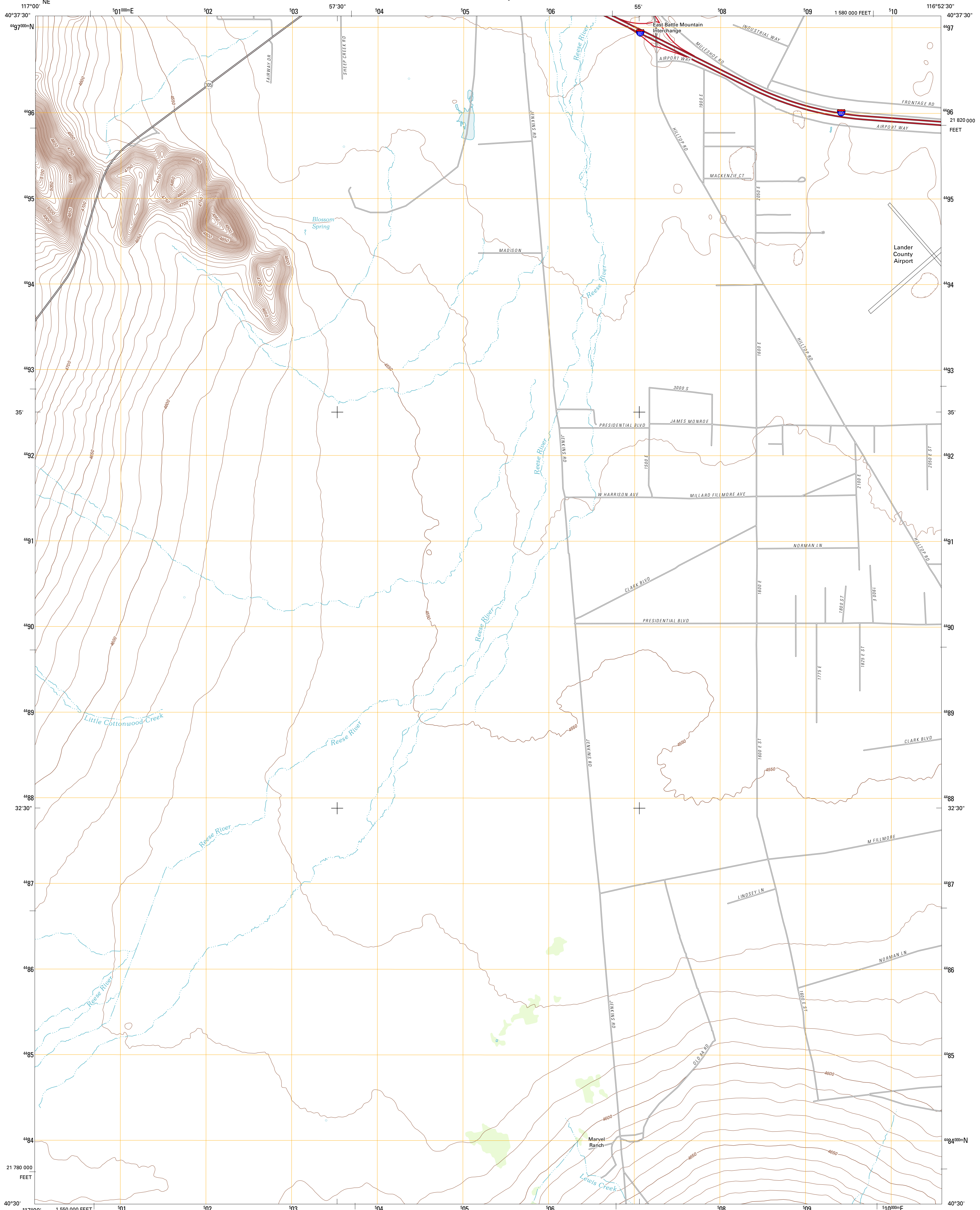




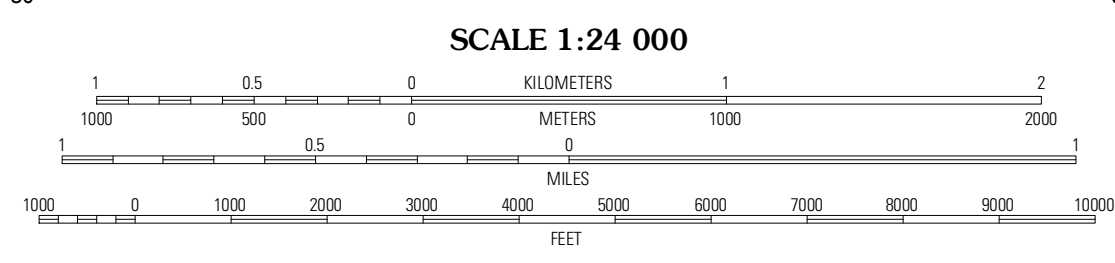
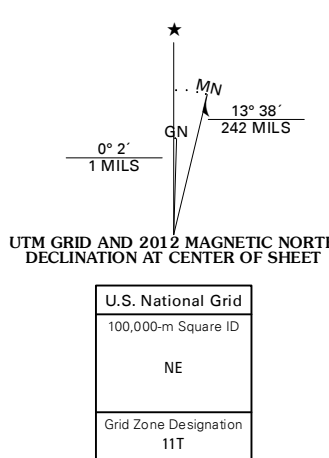
U.S. DEPARTMENT OF THE INTERIOR  
U. S. GEOLOGICAL SURVEY



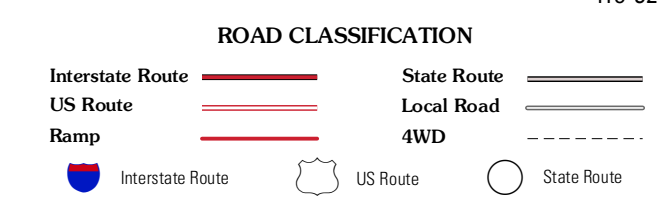
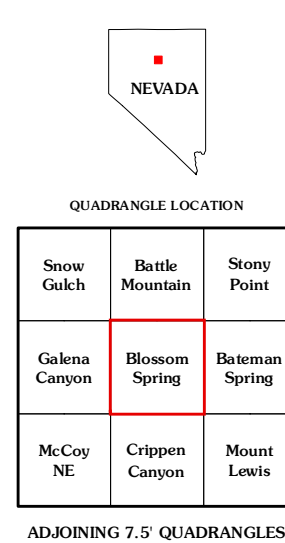
BLOSSOM SPRING QUADRANGLE  
NEVADA-LANDER CO.  
7.5-MINUTE SERIES



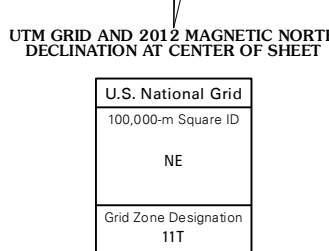
Produced by the United States Geological Survey  
North American Datum of 1983 (NAD83)  
World Geodetic System of 1984 (WGS84). Projection and  
1 000-meter grid: Universal Transverse Mercator, Zone 11T  
10 000-foot ticks: Nevada Coordinate System of 1983  
(central zone)



CONTOUR INTERVAL 10 FEET  
NORTH AMERICAN VERTICAL DATUM OF 1988



Imagery: N.A.I.P., June 2010  
Roads: ©2006-2011 TomTom  
Names: G.N.S., 2011  
Hydrography: National Hydrography Dataset, 2010  
Contours: National Elevation Dataset, 1999  
Boundaries: Census, IBWC, IBC, USGS, 1972 - 2010



This map was produced to conform with the  
National Geospatial Program US Topo Product Standard, 2011.  
A metadata file associated with this product is draft version 0.6.1

ADJOINING 7.5 QUADRANGLES		
Snow Gulch	Battle Mountain	Snow Point
Calkins Canyon	Blossom Spring	Bateman Spring
McCoy NE	Crippen Canyon	Mount Lewis

BLOSSOM SPRING, NV  
2012