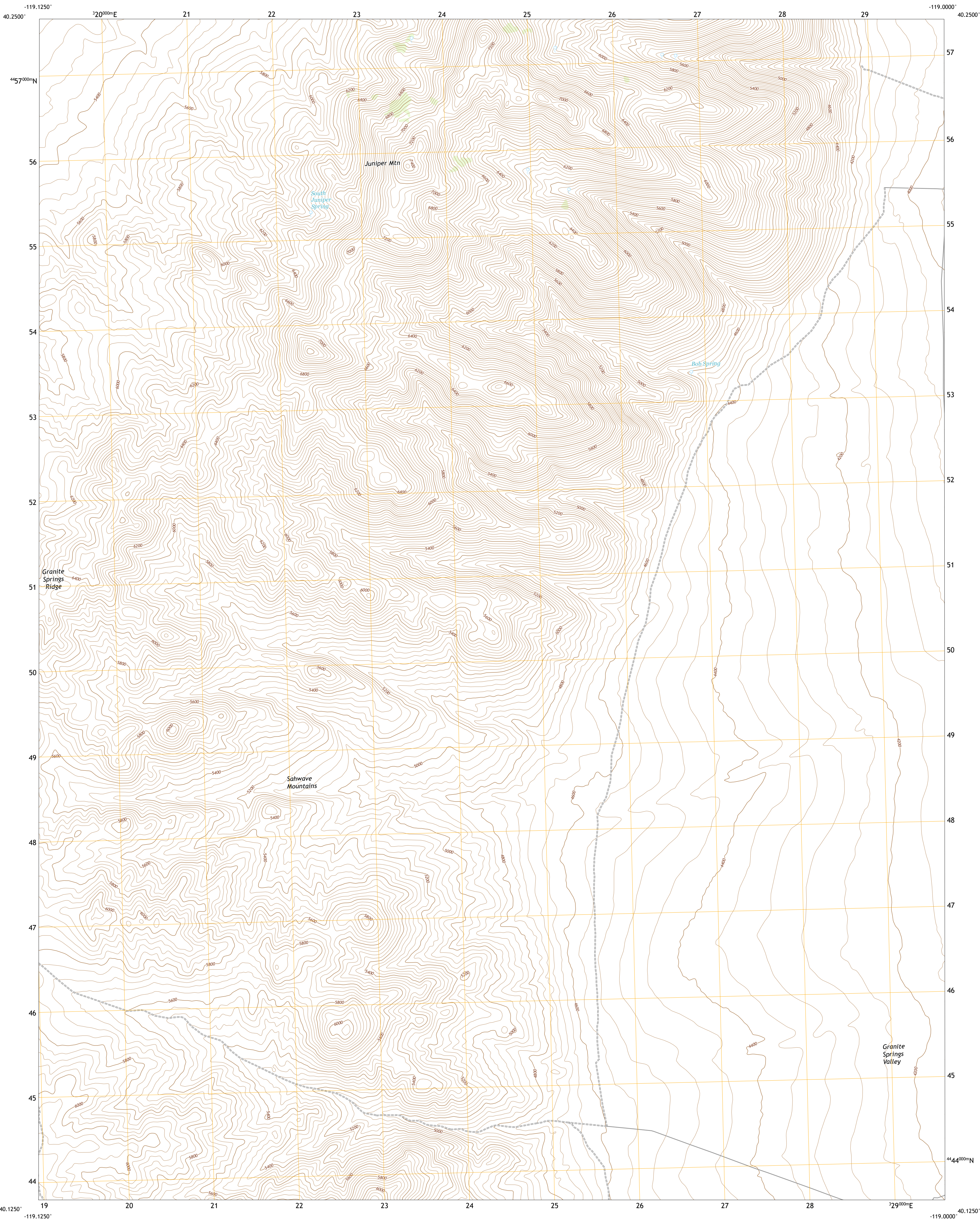




U.S. DEPARTMENT OF THE INTERIOR  
U.S. GEOLOGICAL SURVEY



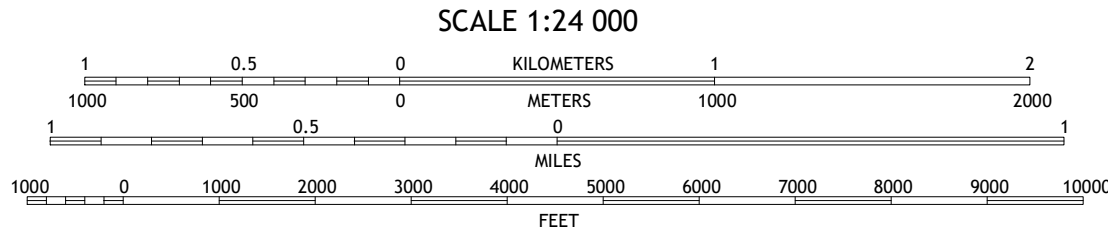
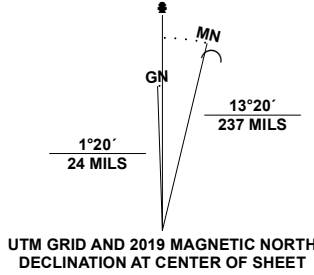
BOB SPRING QUADRANGLE  
NEVADA - PERSHING COUNTY  
7.5-MINUTE SERIES



Produced by the United States Geological Survey

North American Datum of 1983 (NAD83)  
World Geodetic System of 1984 (WGS84). Projection and  
1 000-meter grid/Universal Transverse Mercator, Zone 11T  
This map is not a legal document. Boundaries may be  
generalized for this map scale. Private lands within government  
reservations may not be shown. Obtain permission before  
entering private lands.

Imagery.....NAIP, July 2017 - November 2017  
Roads.....U.S. Census Bureau, 2018  
Names.....GNIS, 1980-1991  
Hydrography.....National Hydrography Dataset, 2005  
Contours.....National Elevation Dataset, 2004  
Boundaries.....Multiple sources: see metadata file, 2019-2021  
Public Land Survey System.....BLM, 2020  
Wetlands.....FWS National Wetlands Inventory, 2015

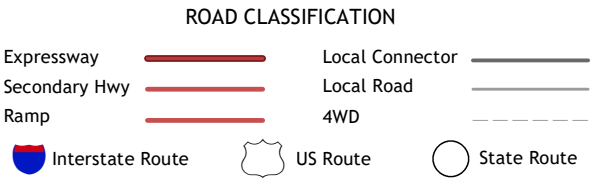


CONTOUR INTERVAL 40 FEET  
NORTH AMERICAN VERTICAL DATUM OF 1988  
This map was produced to conform with the  
National Geospatial Program US Topo Product Standard.



1	2	3
4	5	6
7	8	9

- 1 Jayhawk Well
- 2 Juniper Pass
- 3 Blue Wing Flat North
- 4 Tunnel Spring
- 5 Blue Wing Flat South
- 6 Sage Hen Spring
- 7 Bluewing Spring
- 8 Ragged Top Mountain SW



BOB SPRING, NV  
2021

