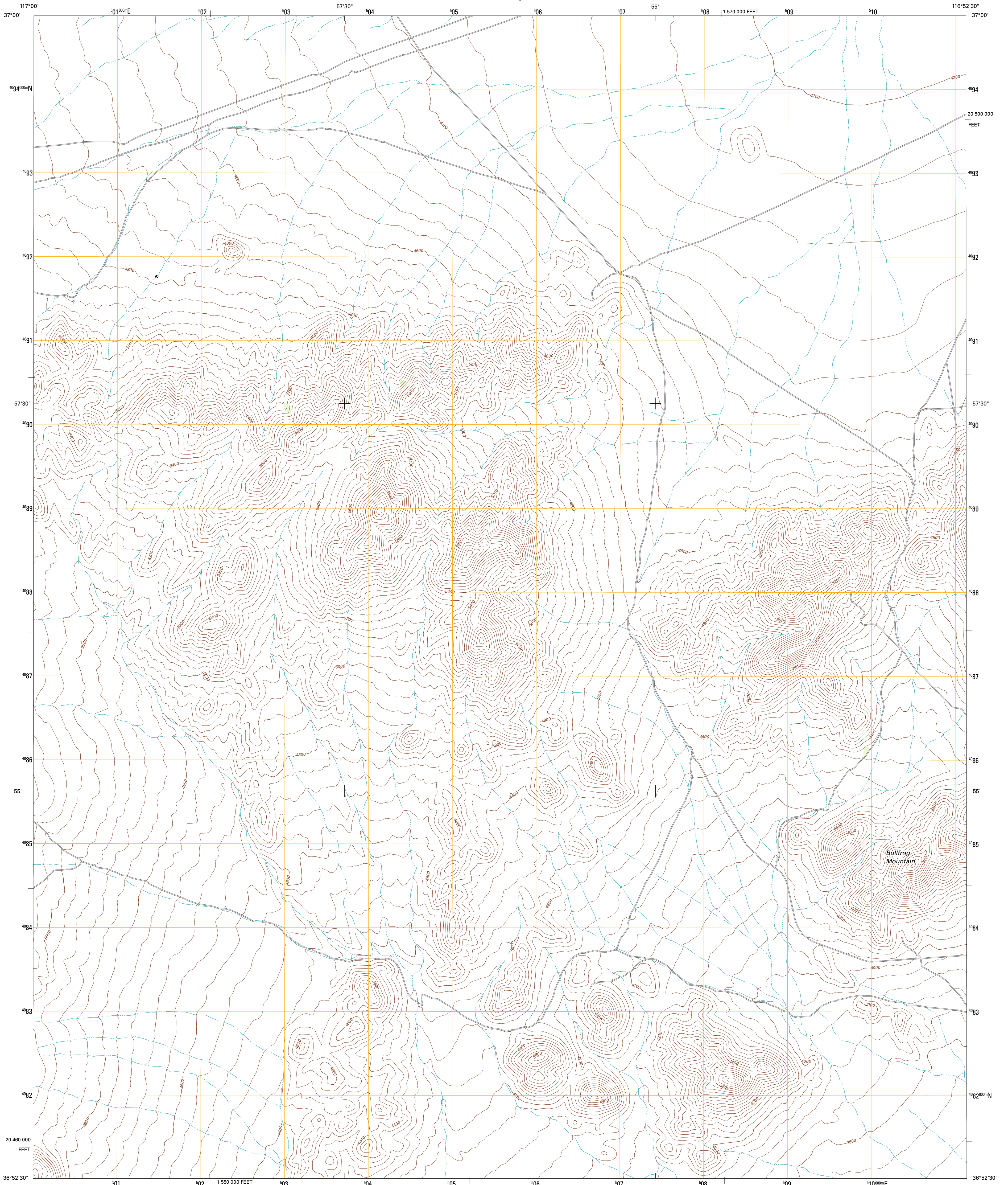




U.S. DEPARTMENT OF THE INTERIOR  
U. S. GEOLOGICAL SURVEY

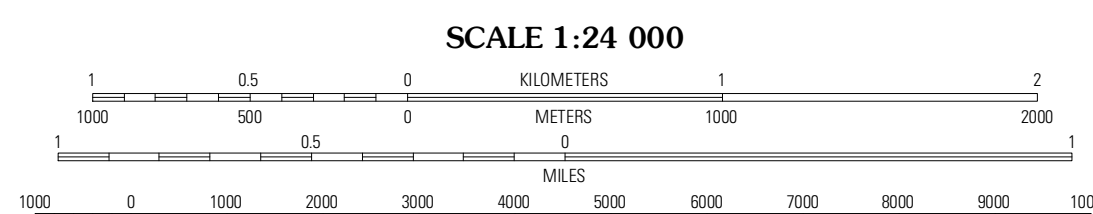
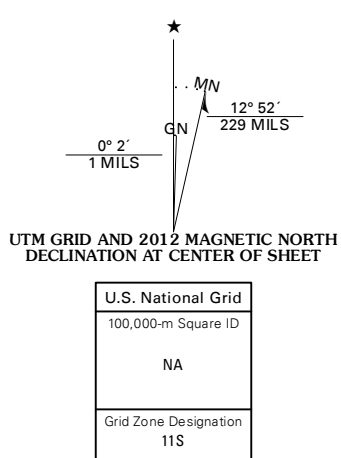


BULLFROG MOUNTAIN QUADRANGLE  
NEVADA-NYE CO.  
7.5-MINUTE SERIES



Produced by the United States Geological Survey  
North American Datum of 1983 (NAD83)  
World Geodetic System of 1984 (WGS84). Projection and  
1 000-meter grid: Universal Transverse Mercator, Zone 11S  
10 000-foot ticks: Nevada Coordinate System of 1983  
(central zone)

Imagery.....NAIP, May 2010  
Roads.....©2006-2011 TomTom  
Names.....GNIS, 2011  
Hydrography.....National Hydrography Dataset, 2010  
Contours.....National Elevation Dataset, 2001  
Boundaries.....Census, BWC, IBC, USGS, 1972 - 2010



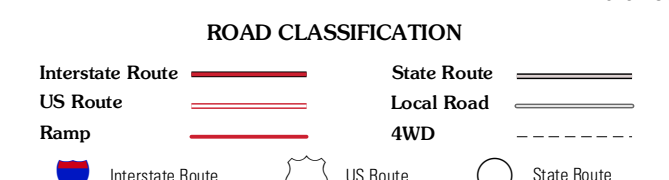
CONTOUR INTERVAL 40 FEET  
NORTH AMERICAN VERTICAL DATUM OF 1988

This map was produced to conform with the  
National Geospatial Program US Topo Product Standard, 2011.  
A metadata file associated with this product is draft version 0.6.1



QUADRANGLE LOCATION

|                    |                      |                |
|--------------------|----------------------|----------------|
| Bonnie<br>Clare SE | Springdale<br>SW     | Springdale     |
| Wahguyhe<br>Peak   | Bullfrog<br>Mountain | Beatty         |
| Thimble<br>Peak    | Daylight<br>Pass     | Gold<br>Center |



BULLFROG MOUNTAIN, NV  
2012

ADJOINING 7.5' QUADRANGLES