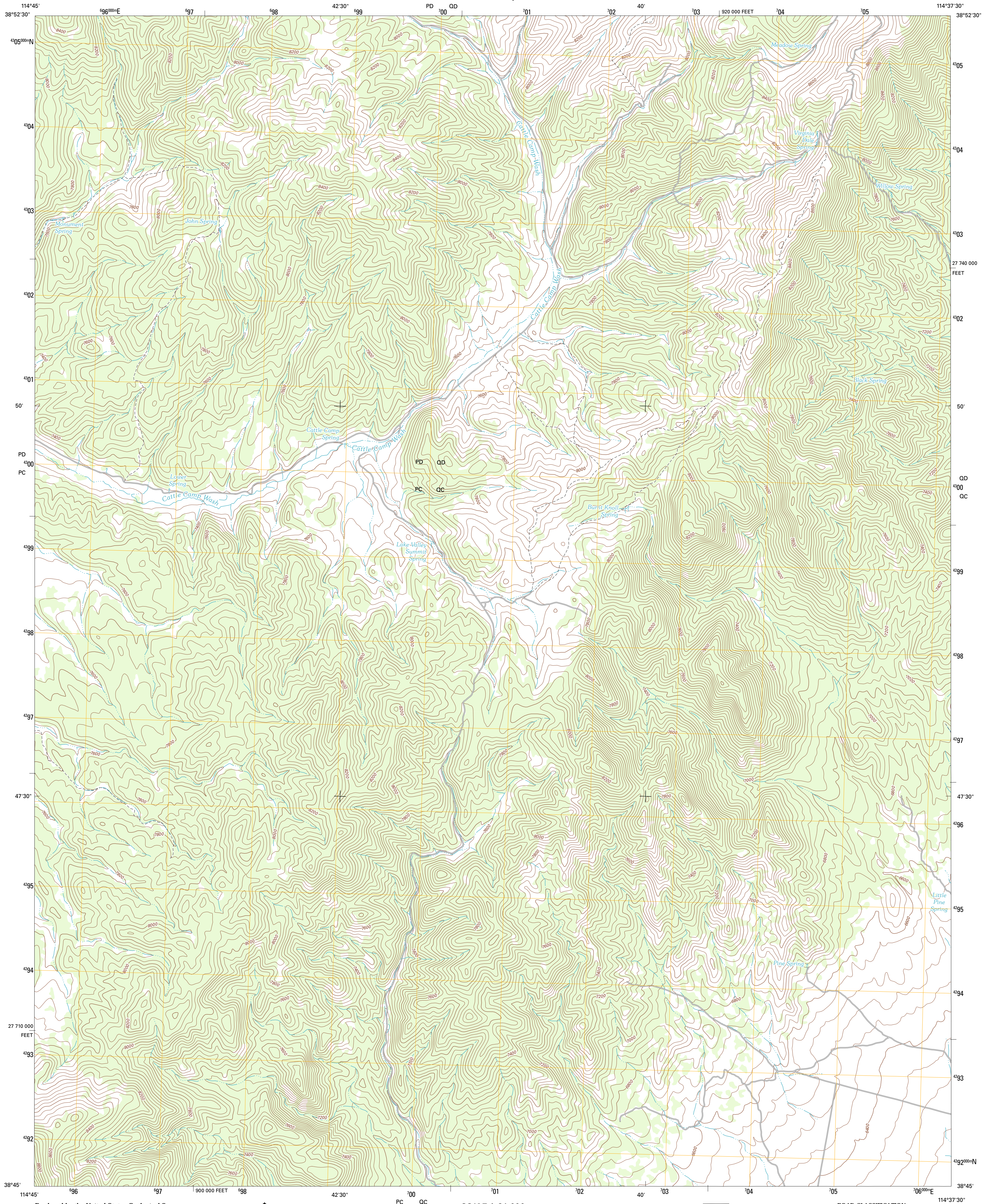




U.S. DEPARTMENT OF THE INTERIOR
U. S. GEOLOGICAL SURVEY

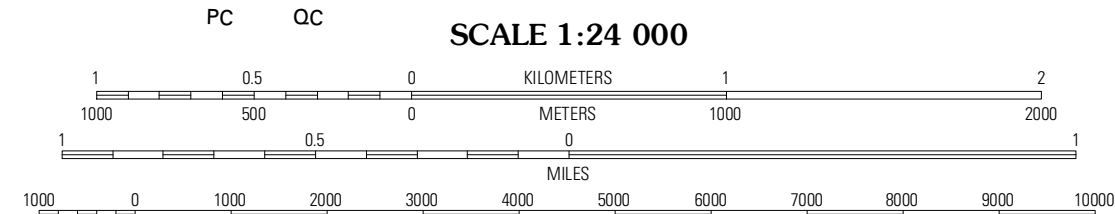
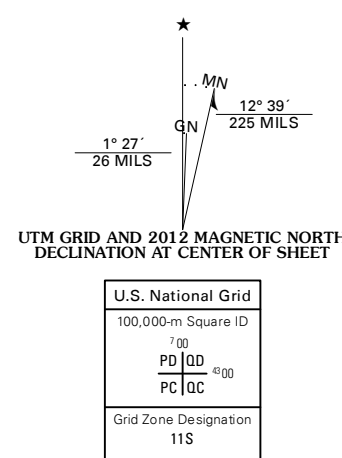


CATTLE CAMP SPRING QUADRANGLE
NEVADA-WHITE PINE CO.
7.5-MINUTE SERIES



Produced by the United States Geological Survey
North American Datum of 1983 (NAD83)
World Geodetic System of 1984 (WGS84). Projection and
1 000-meter grid: Universal Transverse Mercator, Zone 11S
10 000-foot ticks: Nevada Coordinate System of 1983 (east
zone)

Imagery.....N.A.I.P., July 2010
Roads.....©2006-2011 TomTom
Names.....GNS, 2011
Hydrography.....National Hydrography Dataset, 2010
Contours.....National Elevation Dataset, 2010
Boundaries.....Census, IBWC, IBC, USGS, 1972 - 2010



CONTOUR INTERVAL 40 FEET
NORTH AMERICAN VERTICAL DATUM OF 1988
This map was produced to conform with the
National Geospatial Program US Topo Product Standard, 2011.
A metadata file associated with this product is draft version 0.6.1

NEVADA

ROAD CLASSIFICATION

- Interstate Route
- US Route
- Ramp
- State Route
- Local Road
- 4WD
- State Route

QUADRANGLE LOCATION

White Rock Creek	Horse Camp Springs	North Spring Point
Bullback Summit	Cattle Camp Spring	Lake Valley Summit
Parker Station	Mount Grafton	Mount Grafton NE

ADJOINING 7.5' QUADRANGLES

CATTLE CAMP SPRING, NV
2012