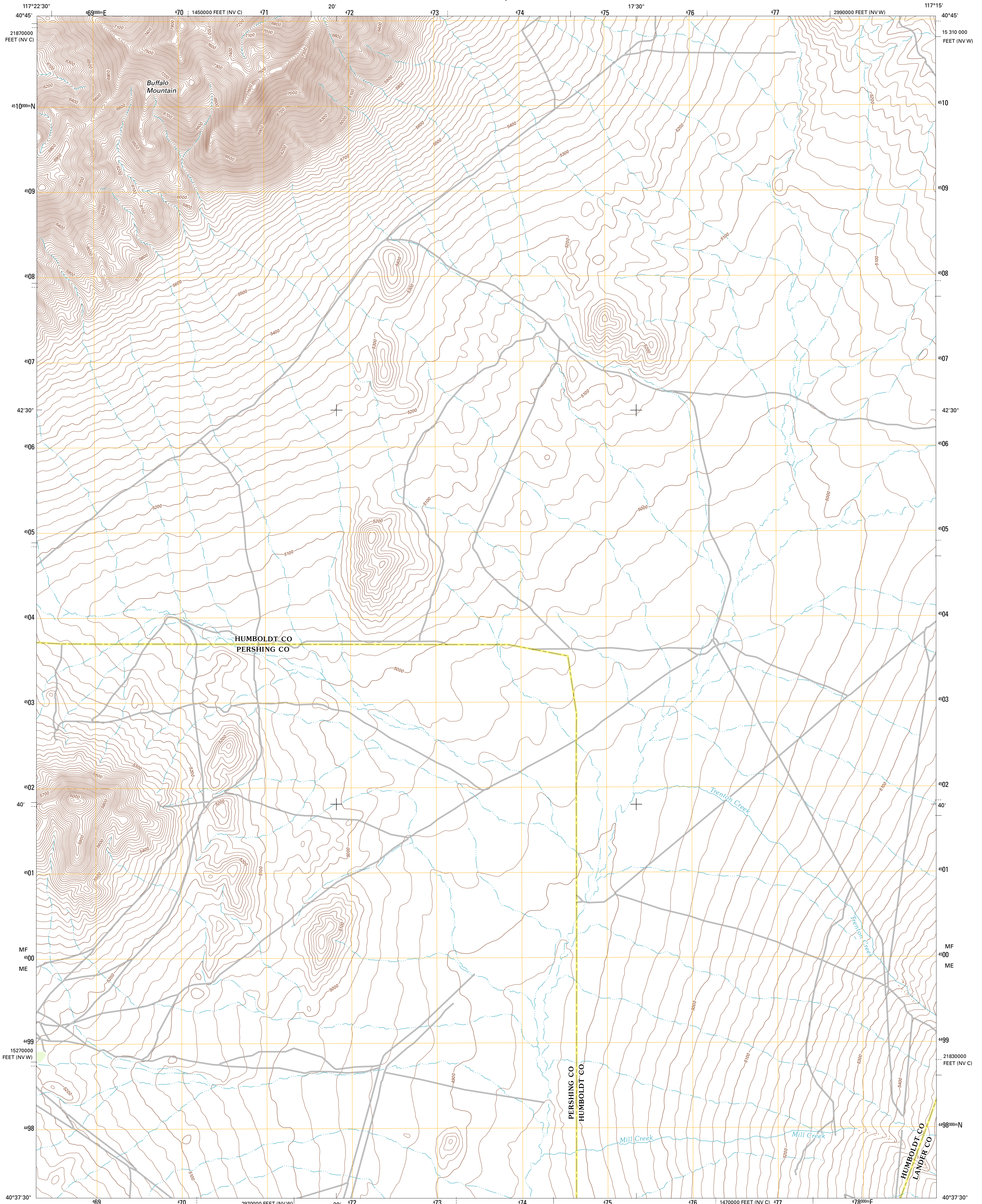




U.S. DEPARTMENT OF THE INTERIOR
U. S. GEOLOGICAL SURVEY

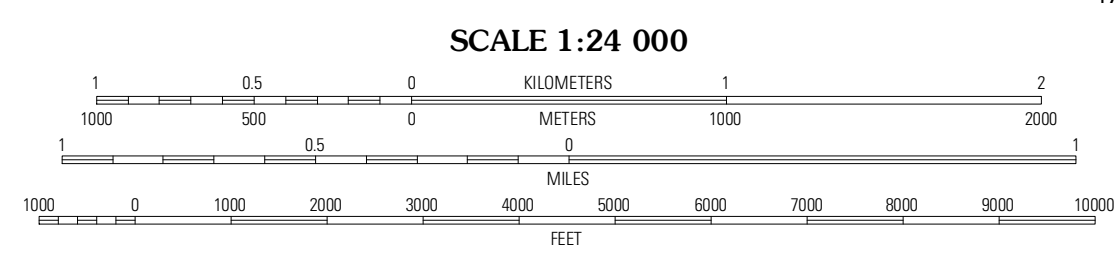
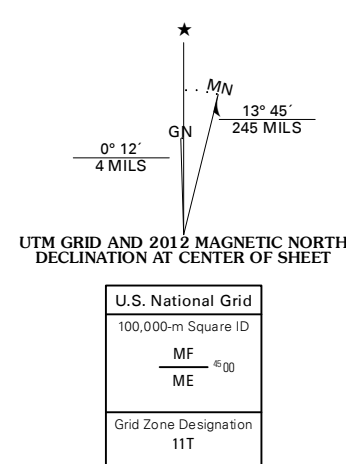


CHERRY CREEK NE QUADRANGLE
NEVADA
7.5-MINUTE SERIES



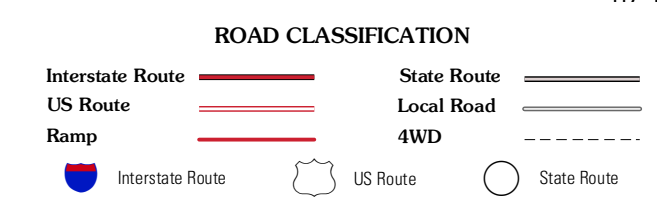
Produced by the United States Geological Survey
North American Datum of 1983 (NAD83)
World Geodetic System of 1984 (WGS84) Projection and
1 000-meter grid: Universal Transverse Mercator, Zone 11T
10 000-foot ticks: Nevada Coordinate System of 1983 (west
and central zones)

Imagery.....NAIP, June 2010 - July 2010
Roads.....©2006-2011, TomTom
Names.....National Hydrography Dataset, 2011
Hydrography.....National Hydrography Dataset, 2010
Contours.....National Elevation Dataset, 1999
Boundaries.....Census, IBWC, IBC, USGS, 1972 - 2010



CONTOUR INTERVAL 20 FEET
NORTH AMERICAN VERTICAL DATUM OF 1988

This map was produced to conform with the
National Geospatial Program US Topo Product Standard, 2011.
A metadata file associated with this product is draft version 0.6.1



QUADRANGLE LOCATION

Goldrun Creek	Brooks Spring	Valley
Smelter Pass	Cherry Creek NE	North Peak
China Mountain	Cherry Creek SE	Antler Peak

ADJOINING 7.5' QUADRANGLES

CHERRY CREEK NE, NV
2012