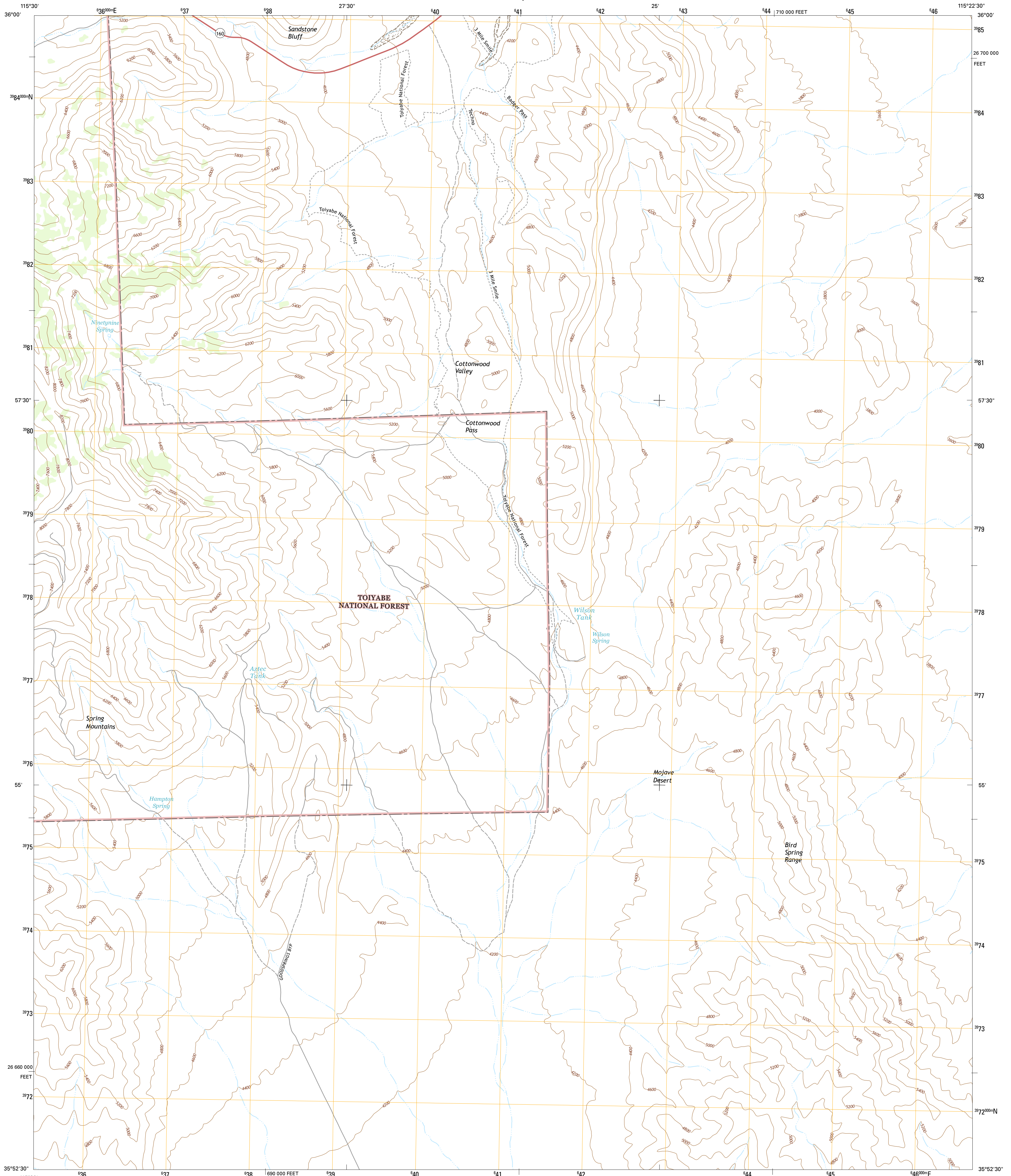




U.S. DEPARTMENT OF THE INTERIOR  
U.S. GEOLOGICAL SURVEY

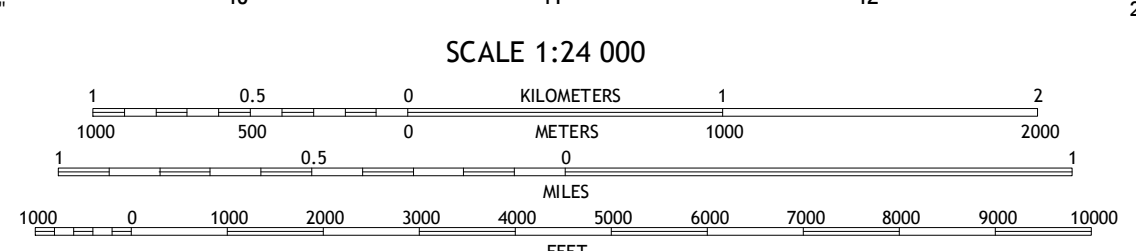
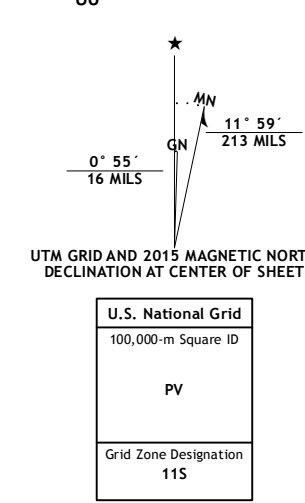


COTTONWOOD PASS QUADRANGLE  
NEVADA-CLARK CO.  
7.5-MINUTE SERIES



Produced by the United States Geological Survey  
North American Datum of 1983 (NAD83)  
World Geodetic System of 1984 (WGS84). Projection and  
1 000-meter grid: Universal Transverse Mercator, Zone 11S  
10 000-foot ticks: Nevada Coordinate System of 1983 (east zone)  
This map is not a legal document. Boundaries may be  
generalized for this map scale. Private lands within government  
reservations may not be shown. Obtain permission before  
entering private lands.

Imagery.....NAIP, July 2013  
Roads.....HERE, ©2013 - 2014  
Roads within US Forest Service Lands.....FS Topo Data  
with limited Forest Service updates, 2012 - 2015  
Names.....GNIS, 2015  
Hydrography.....National Hydrography Dataset, 2013  
Contours.....National Elevation Dataset, 2004  
Boundaries.....Multiple sources; see metadata file 1972 - 2015  
Public Land Survey System.....BLM, 2011



ROAD CLASSIFICATION

Expressway	Local Connector
Secondary Hwy	Local Road
Ramp	4WD
Interstate Route	US Route
FS Primary Route	FS Passenger Route
	FS High Clearance Route

ADJOINING QUADRANGLES

1	2	3
4	5	6
7	8	

1 Mountain Springs  
2 Blue Diamond  
3 Blue Diamond SE  
4 Potosi  
5 Bird Spring  
6 Shoshone Peak  
7 Goodsprings  
8 Jean

Check with local Forest Service unit for current travel conditions and restrictions.

COTTONWOOD PASS, NV  
2015

