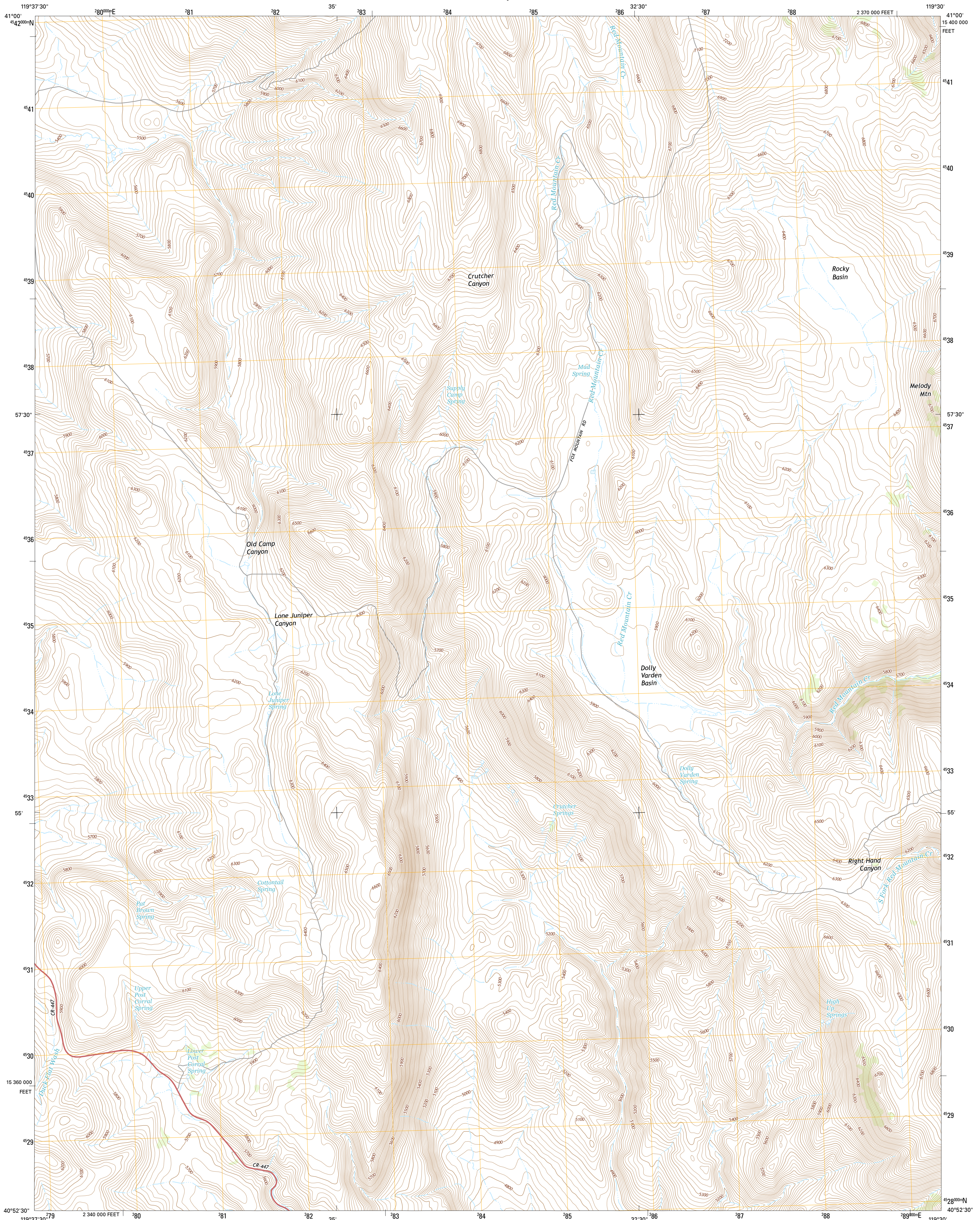




U.S. DEPARTMENT OF THE INTERIOR  
U.S. GEOLOGICAL SURVEY



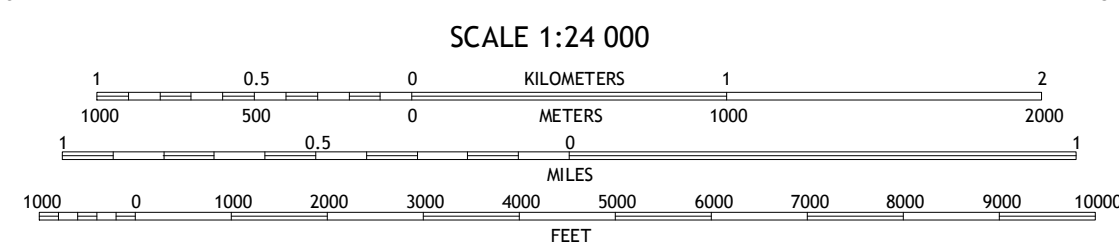
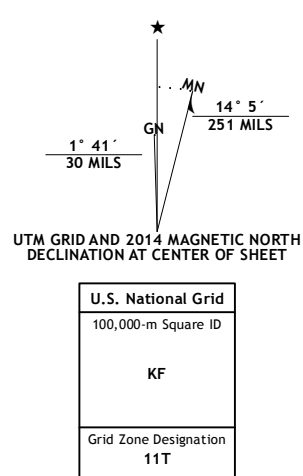
CRUTCHER CANYON QUADRANGLE  
NEVADA-WASHOE CO.  
7.5-MINUTE SERIES



Produced by the United States Geological Survey  
North American Datum of 1983 (NAD83)  
World Geodetic System of 1984 (WGS84). Projection and  
1 000-meter grid: Universal Transverse Mercator, Zone 11T  
10 000-foot ticks: Nevada Coordinate System of 1983 (west zone)

This map is not a legal document. Boundaries may be  
generalized for this map scale. Private lands within government  
reservations may not be shown. Obtain permission before  
entering private lands.

Imagery.....NAIP, July 2013  
Roads.....HERE, ©2013  
Names.....GNIS, 2013  
Hydrography.....National Hydrography Dataset, 2013  
Contours.....National Elevation Dataset, 2001  
Boundaries.....Multiple sources; see metadata file 1972 - 2014  
Public Land Survey System.....BLM, 2011



CONTOUR INTERVAL 20 FEET  
NORTH AMERICAN VERTICAL DATUM OF 1988  
This map was produced to conform with the  
National Geospatial Program US Topo Product Standards, 2011.  
A metadata file associated with this product is draft version 0.6.18



QUADRANGLE LOCATION

**ROAD CLASSIFICATION**  
Expressway Local Connector   
Secondary Hwy Local Road   
Ramp AWD   
Interstate Route US Route   
State Route

1	2	3
4	5	6
7	8	9

ADJOINING QUADRANGLES

- 1 Lost Creek Pass
- 2 Fox Mountain
- 3 Leadville
- 4 Hillside Spring
- 5 Melody Mountain
- 6 Poodle Mountain
- 7 Squaw Valley
- 8 The Banjo

CRUTCHER CANYON, NV  
2014

