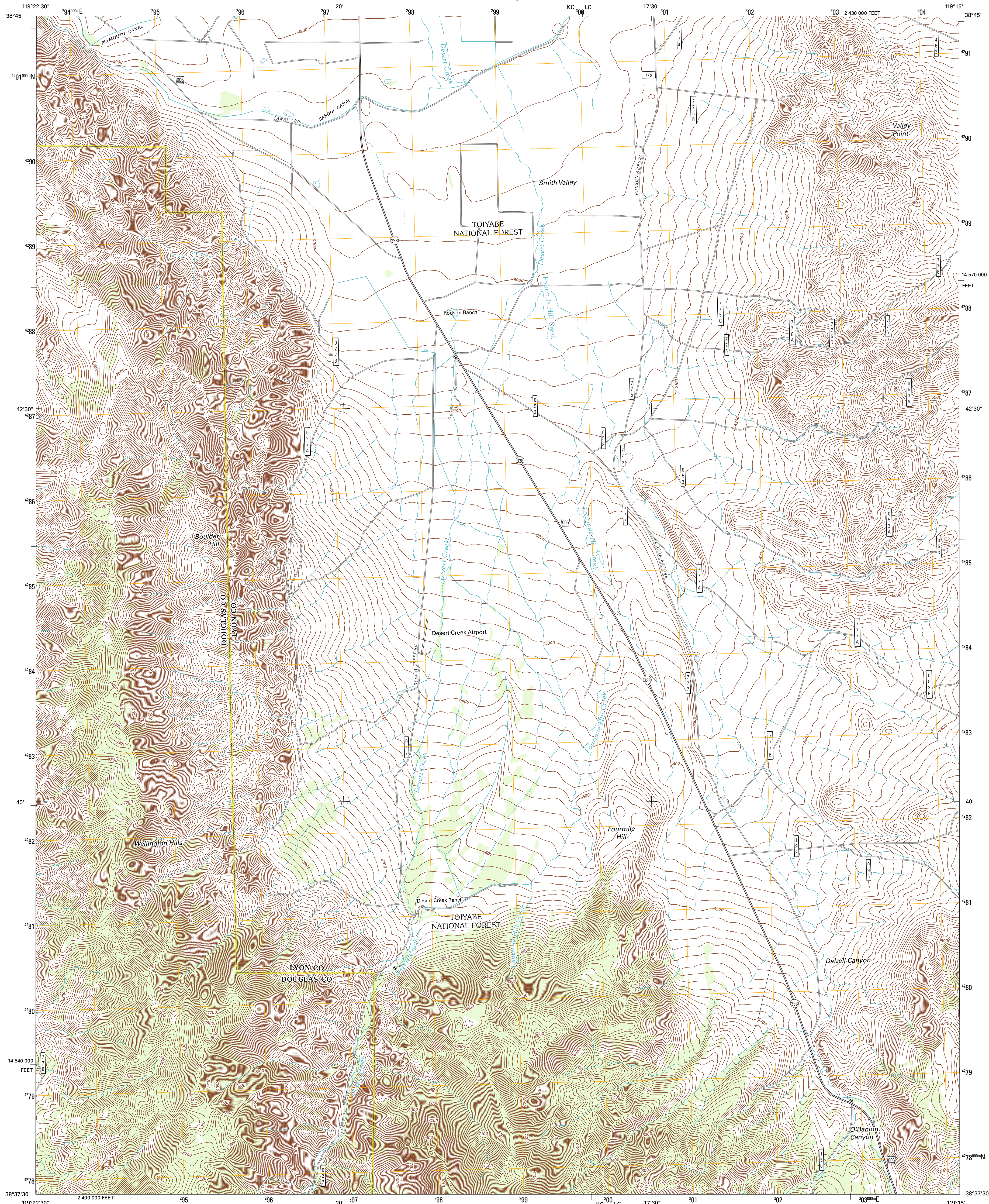




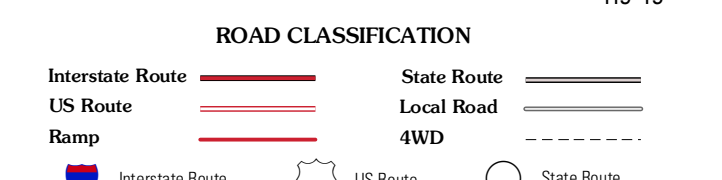
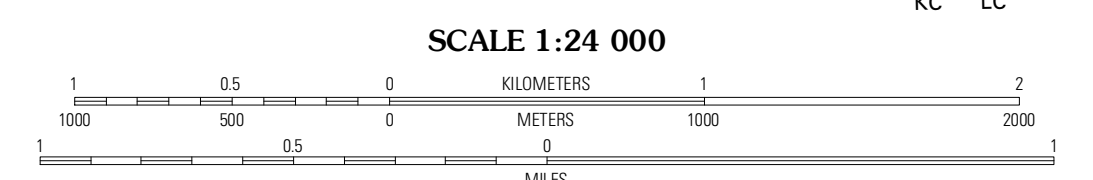
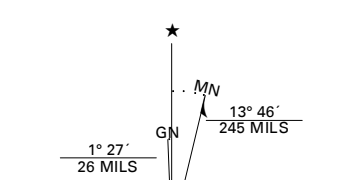
U.S. DEPARTMENT OF THE INTERIOR
U. S. GEOLOGICAL SURVEY



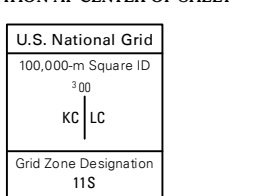
DESERT CREEK RANCH QUADRANGLE
NEVADA
7.5-MINUTE SERIES



Produced by the United States Geological Survey
North American Datum of 1983 (NAD83)
World Geodetic System of 1984 (WGS84). Projection and
1 000-meter grid: Universal Transverse Mercator, Zone 11S
10 000-foot ticks: Nevada Coordinate System of 1983 (west
zone)



Imagery:.....NAP, June 2010
Roads:.....©2006-2011 TomTom
Roads within US Forest Service Lands:.....FS Topo Data
with limited Forest Service updates, 2009
Names:.....GNIS, 2011
Hydrography:.....National Hydrography Dataset, 2010
Contours:.....National Elevation Dataset, 2001
Boundaries:.....Census, IBWC, USGS, 1972 - 2010



CONTOUR INTERVAL 20 FEET
NORTH AMERICAN VERTICAL DATUM OF 1988

This map was produced to conform with the
National Geospatial Program US Topo Product Standard, 2011.
A metadata file associated with this product is draft version 0.6.1

QUADRANGLE LOCATION

Owens Peak	Smith	Wilson Canyon
Long Dry Canyon	Desert Creek Ranch	Mount Ena
Rise Canyon	Desert Creek Peak	Nye Canyon

Check with local Forest Service unit
for current travel conditions and restrictions.

DESERT CREEK RANCH, NV
2012

ADJOINING 7.5' QUADRANGLES