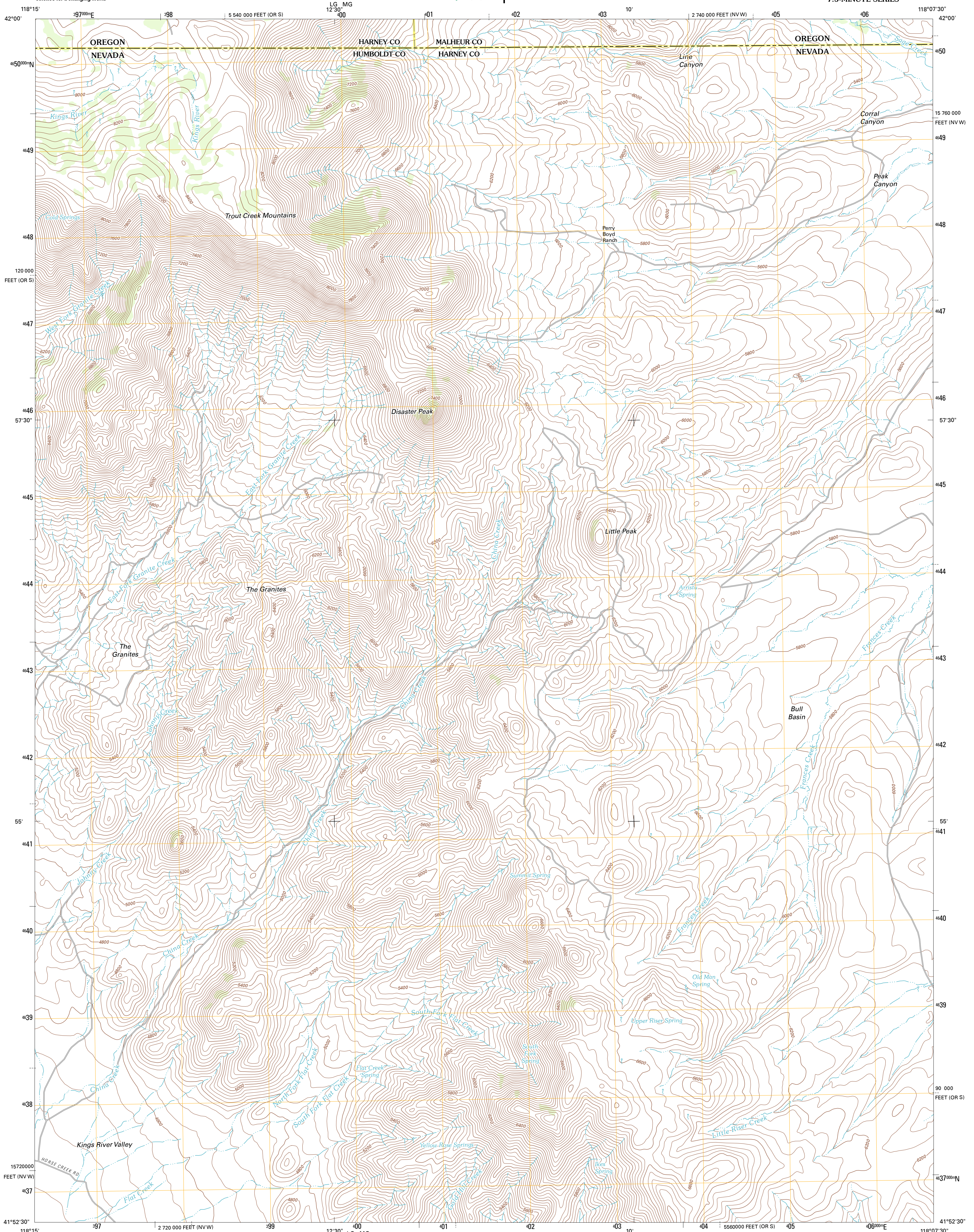




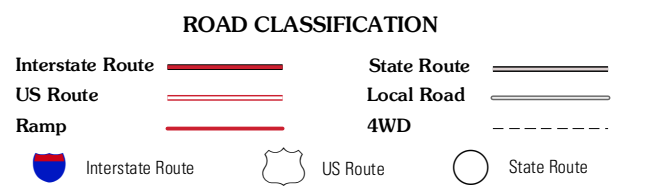
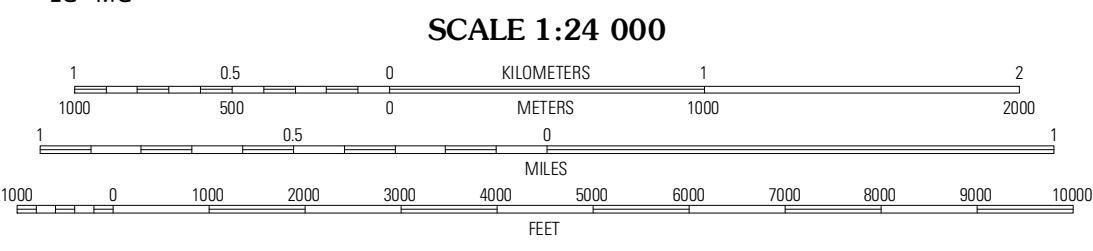
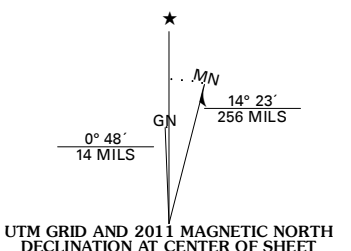
U.S. DEPARTMENT OF THE INTERIOR
U. S. GEOLOGICAL SURVEY



DISASTER PEAK QUADRANGLE
NEVADA-OREGON
7.5-MINUTE SERIES



Produced by the United States Geological Survey
 North American Datum of 1983 (NAD83)
 World Geodetic System of 1984 (WGS84). Projection and
 1 000-meter grid: Universal Transverse Mercator, Zone 11T
 10 000-foot ticks: Nevada Coordinate System of 1983 (west
 zone), Oregon Coordinate System of 1983 (south zone)



QUADRANGLE LOCATION

The V	Chicken Spring	Payne Creek
Holloway Mountain	Disaster Peak	Washburn Basin
Kings River Ranch	Calavera Canyon	Jordan Meadow Mountain

DISASTER PEAK, NV-OR
2011

CONTOUR INTERVAL 40 FEET
NORTH AMERICAN VERTICAL DATUM OF 1988

This map was produced to conform with the
National Geospatial Program US Topo Product Standard, 2011.
A metadata file associated with this product is draft version 0.6.1