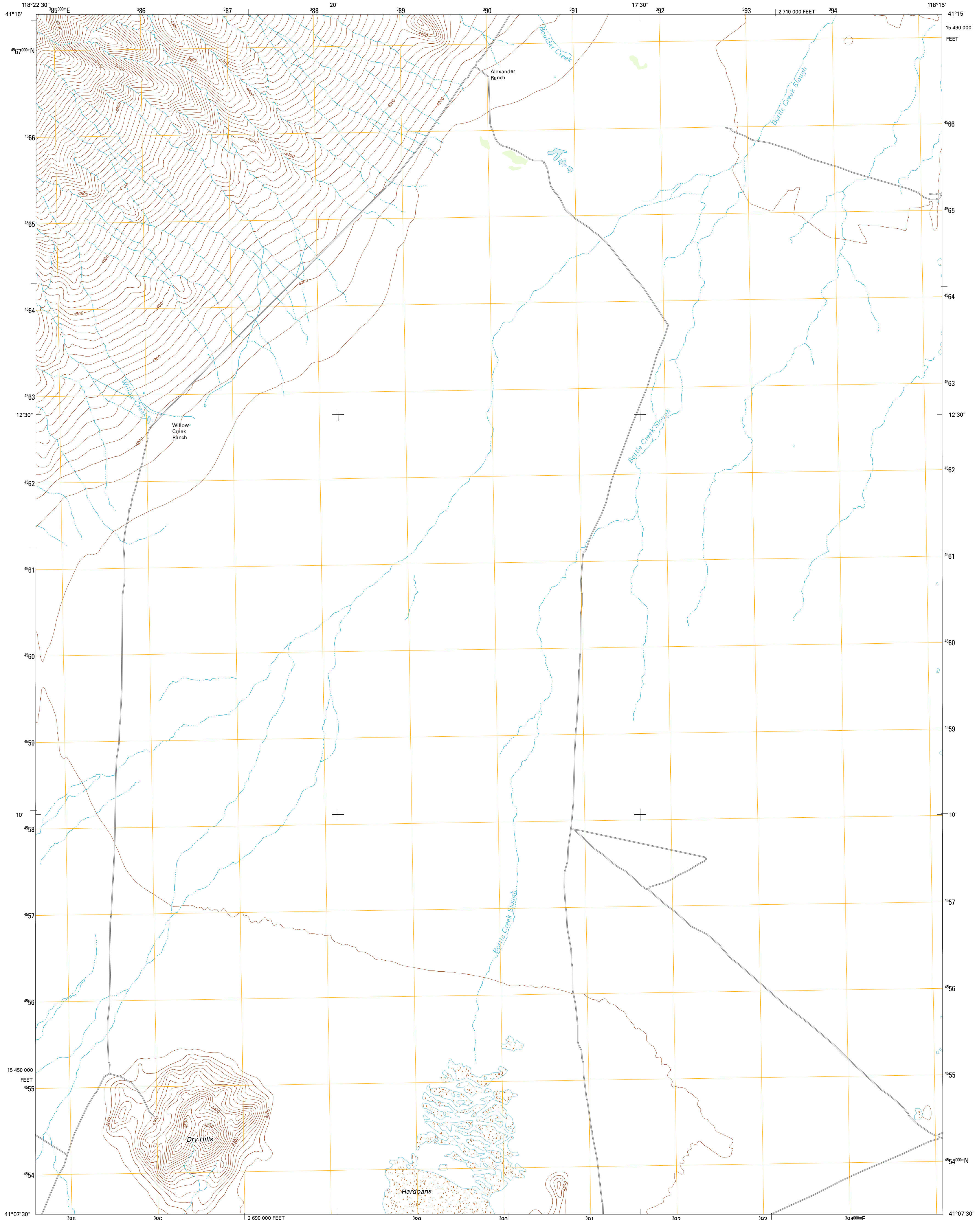




U.S. DEPARTMENT OF THE INTERIOR
U. S. GEOLOGICAL SURVEY

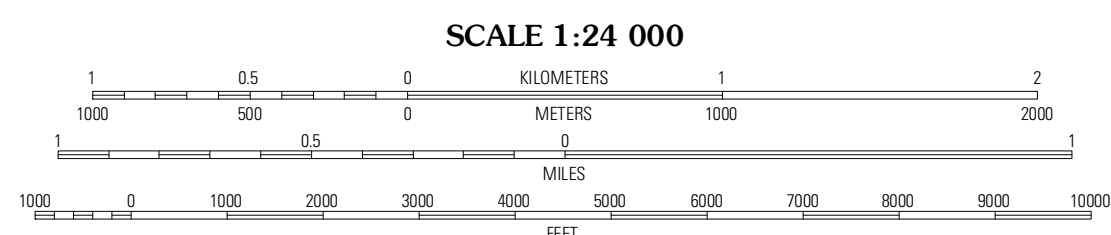
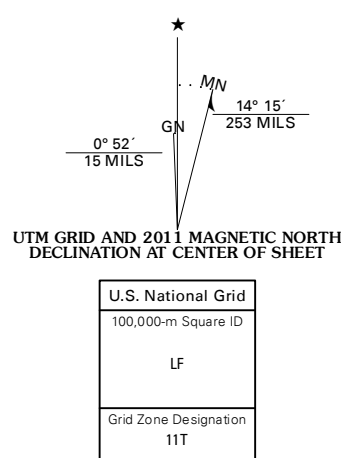


DRY HILLS QUADRANGLE
NEVADA-HUMBOLDT CO.
7.5-MINUTE SERIES



Produced by the United States Geological Survey
North American Datum of 1983 (NAD83)
World Geodetic System of 1984 (WGS84). Projection and
1 000-meter grid: Universal Transverse Mercator, Zone 11T
10 000-foot ticks: Nevada Coordinate System of 1983 (west
zone)

Imagery.....NAIP, June 2010
Roads.....©2006-2011 TomTom
Names.....GNIS, 2011
Hydrography.....National Hydrography Dataset, 2010
Contours.....National Elevation Dataset, 2002
Boundaries.....Census, IBWC, IBC, USGS, 1972 - 2010



CONTOUR INTERVAL 20 FEET
NORTH AMERICAN VERTICAL DATUM OF 1988

This map was produced to conform with the
National Geospatial Program US Topo Product Standard, 2011.
A metadata file associated with this product is draft version 0.6.1



QUADRANGLE LOCATION

Parrot Peak	Bottle Creek Ranch	Bottle Creek Slough SW
Schoolhouse Butte	Dry Hills	Presnel Well
Donna Schee Spring	Donna Schee Peak	Lay Waterhole

ADJOINING 7.5' QUADRANGLES

ROAD CLASSIFICATION

Interstate Route State Route

US Route Local Road

Ramp 4WD

Interstate Route US Route State Route

DRY HILLS, NV
2011