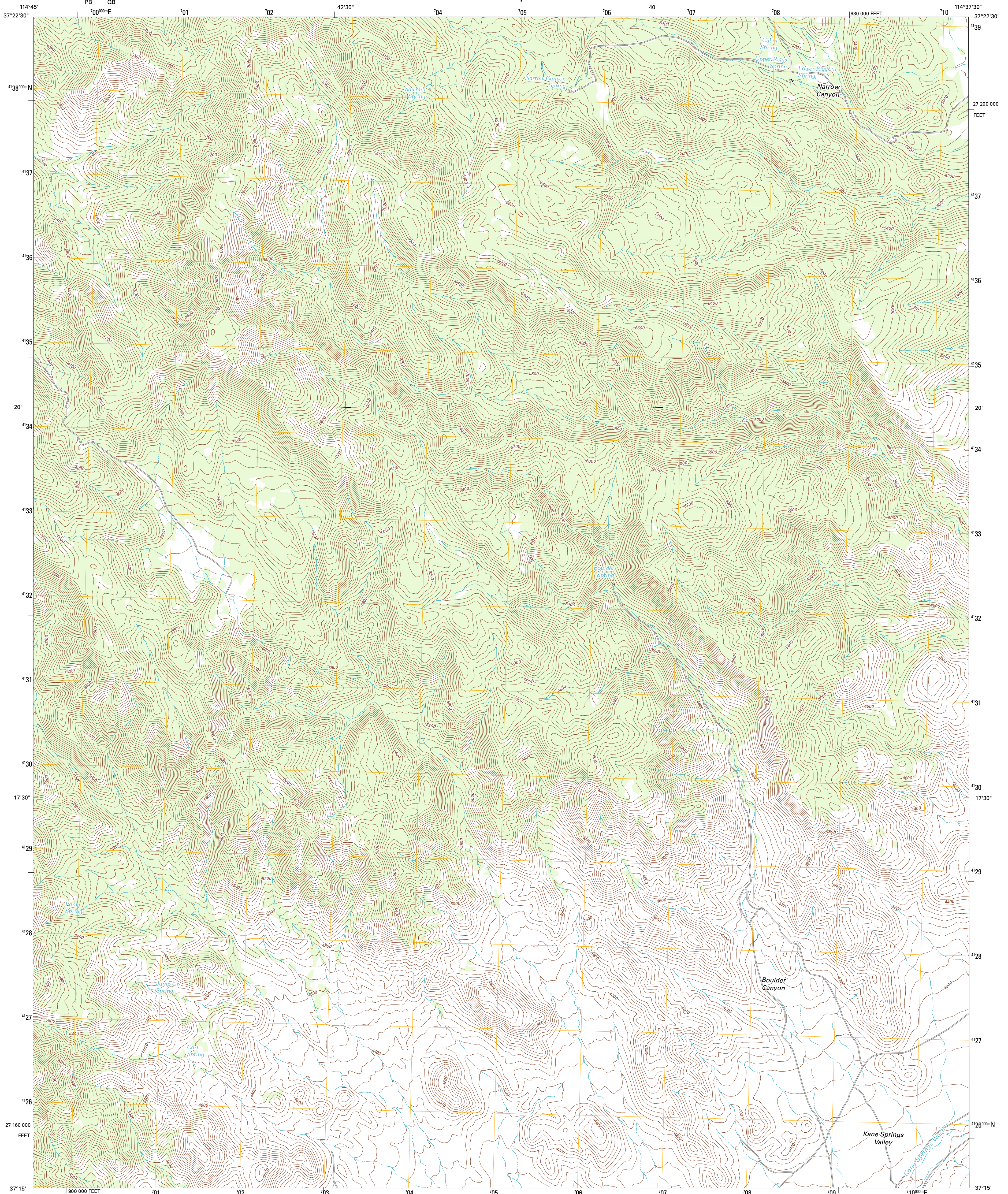




U.S. DEPARTMENT OF THE INTERIOR
U. S. GEOLOGICAL SURVEY

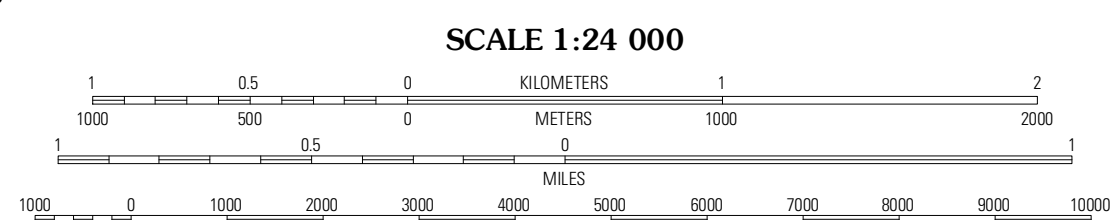
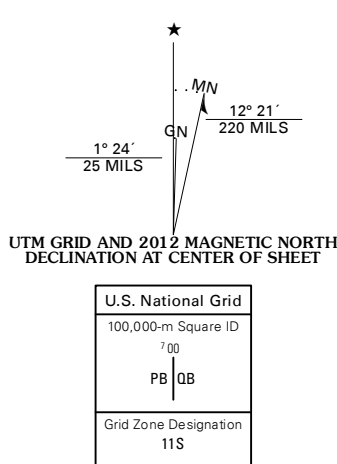


ELGIN SW QUADRANGLE
NEVADA-LINCOLN CO.
7.5-MINUTE SERIES

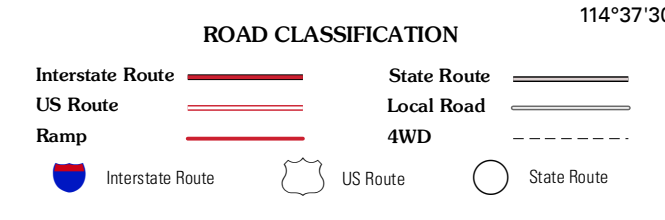
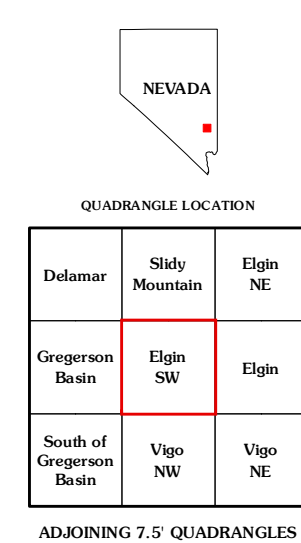


Produced by the United States Geological Survey
North American Datum of 1983 (NAD83)
World Geodetic System of 1984 (WGS84). Projection and
1 000-meter grid: Universal Transverse Mercator, Zone 11S
10 000-foot ticks: Nevada Coordinate System of 1983 (east zone)

Imagery.....NAIP, May 2010
Roads.....©2006-2011, TomTom
Names.....GNIS, 2011
Hydrography.....National Hydrography Dataset, 2010
Contours.....National Elevation Dataset, 2005
Boundaries.....Census, BWC, IBC, USGS, 1972 - 2010



SCALE 1:24 000
CONTOUR INTERVAL 40 FEET
NORTH AMERICAN VERTICAL DATUM OF 1988
This map was produced to conform with the
National Geospatial Program US Topo Product Standard, 2011.
A metadata file associated with this product is draft version 0.6.1



ELGIN SW, NV
2012

QUADRANGLE LOCATION		
Delamar	Slidy Mountain	Elgin NE
Gregerson Basin	Elgin SW	Elgin
South of Gregerson Basin	Vigo NW	Vigo NE

ADJOINING 7.5 QUADRANGLES