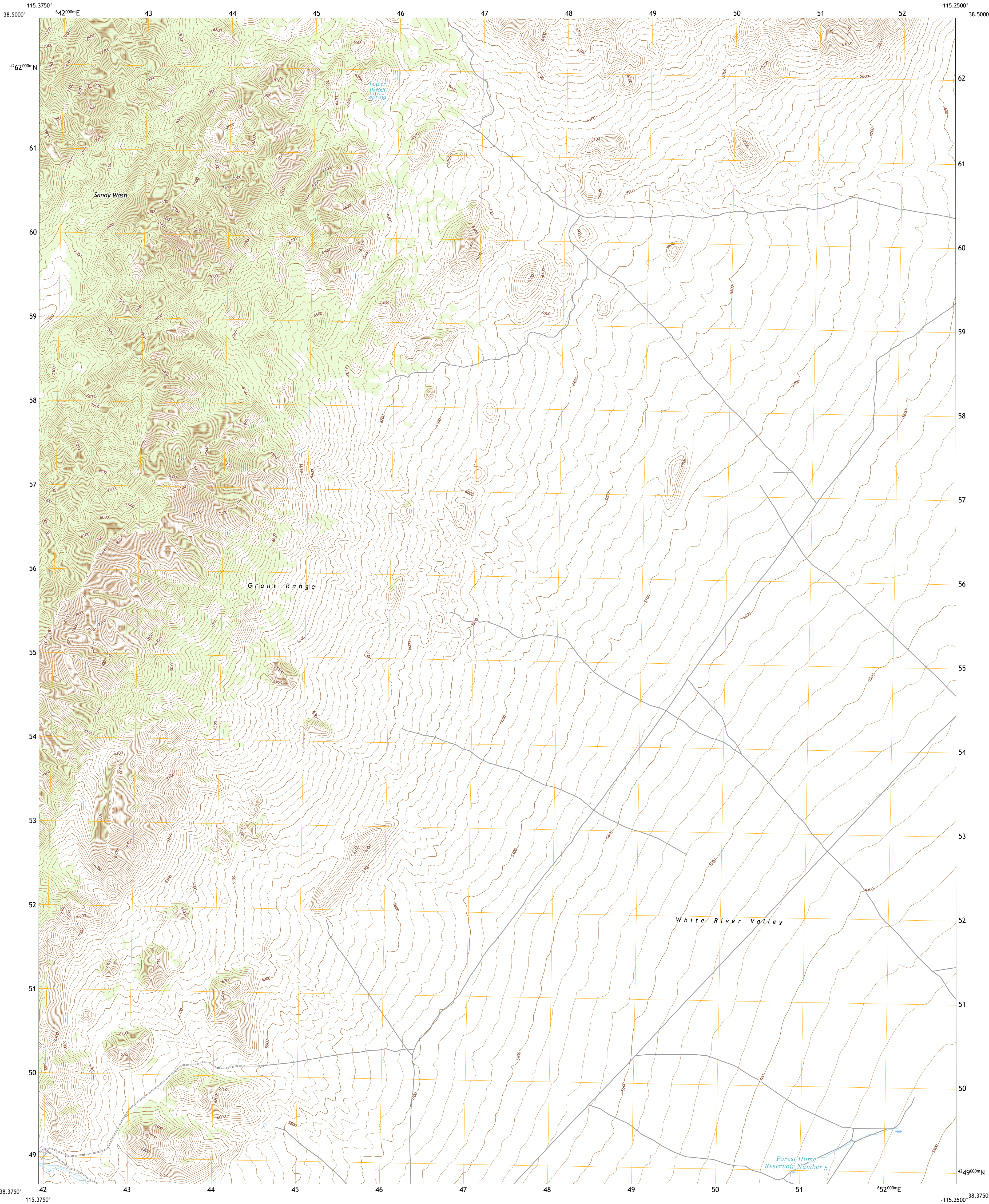




U.S. DEPARTMENT OF THE INTERIOR
U.S. GEOLOGICAL SURVEY



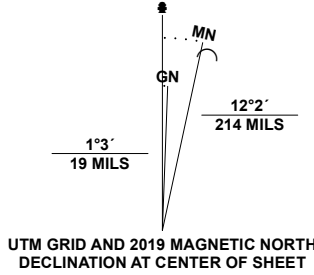
FOREST HOME NE QUADRANGLE
NEVADA - NYE COUNTY
7.5-MINUTE SERIES



Produced by the United States Geological Survey

North American Datum of 1983 (NAD83)
World Geodetic System of 1984 (WGS84). Projection and
1 000-meter grid/Universal Transverse Mercator, Zone 11S
This map is not a legal document. Boundaries may be
generalized for this map scale. Private lands within government
reservations may not be shown. Obtain permission before
entering private lands.

Imagery.....NAIP, June 2017 - November 2017
Roads.....U.S. Census Bureau, 2018
Names.....GNIS, 1980 - 2021
Hydrography.....National Hydrography Dataset, 2005 - 2019
Contours.....National Elevation Dataset, 2004
Boundaries.....Multiple sources: see metadata file, 2019 - 2021
Public Land Survey System.....BLM, 2020
Wetlands.....FWS National Wetlands Inventory, 2015



CONTOUR INTERVAL 20 FEET
NORTH AMERICAN VERTICAL DATUM OF 1988
This map was produced to conform with the
National Geospatial Program US Topo Product Standard.



1	2	3
4	5	6
7	8	9

1 Blue Eagle Mountain
2 Wells Station
3 Moorman Spring
4 Health Canyon
5 Sunnyside NW
6 Horse Spring Hills
7 Forest Home
8 Hot Creek Butte

ROAD CLASSIFICATION
Expressway
Secondary Hwy
Ramp
Local Connector
Local Road
4WD
US Route
State Route

FOREST HOME NE, NV
2021

