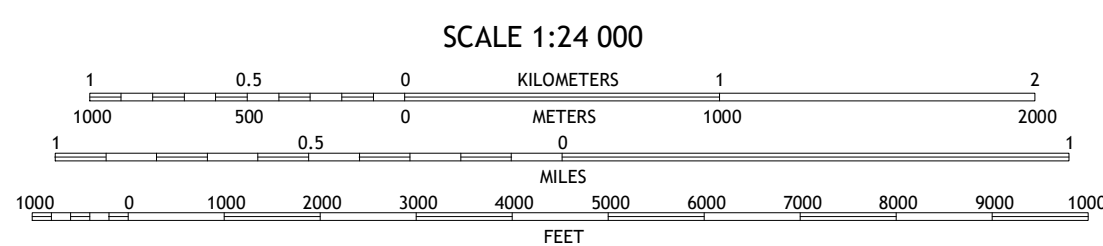
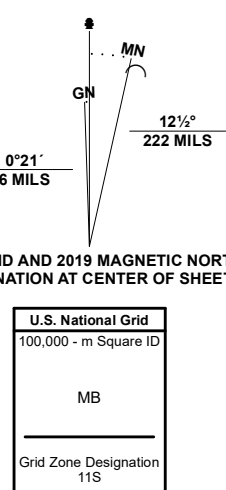


Produced by the United States Geological Survey

North American Datum of 1983 (NAD83)  
World Geodetic System of 1984 (WGS84) Projection and  
1 000-meter grid/Universal Transverse Mercator, Zone 11S  
This map is not a legal document. Boundaries may be  
generalized for this map scale. Private lands within government  
reservations may not be shown. Obtain permission before  
entering private lands.  
Imagery.....NAIP, June 2017 - November 2017  
Roads.....U.S. Census Bureau, 2018  
Names.....GNIS, 1980 - 2009  
Hydrography.....National Hydrography Dataset, 2006 - 2021  
Contours.....National Elevation Dataset, 2003  
Boundaries.....Multiple sources; see metadata file, 2019 - 2021  
Public Land Survey System.....BLM, 2020  
Wetlands.....FWS National Wetlands Inventory Not Available



ADJOINING QUADRANGLES

1	2	3
4	5	6
7	8	

1 North of Silver Peak  
2 Weepah  
3 Paymaster Canyon  
4 Silver Peak  
5 Paymaster Ridge  
6 Lida Wash NW  
7 Alcatraz Island  
8 Split Mountain

