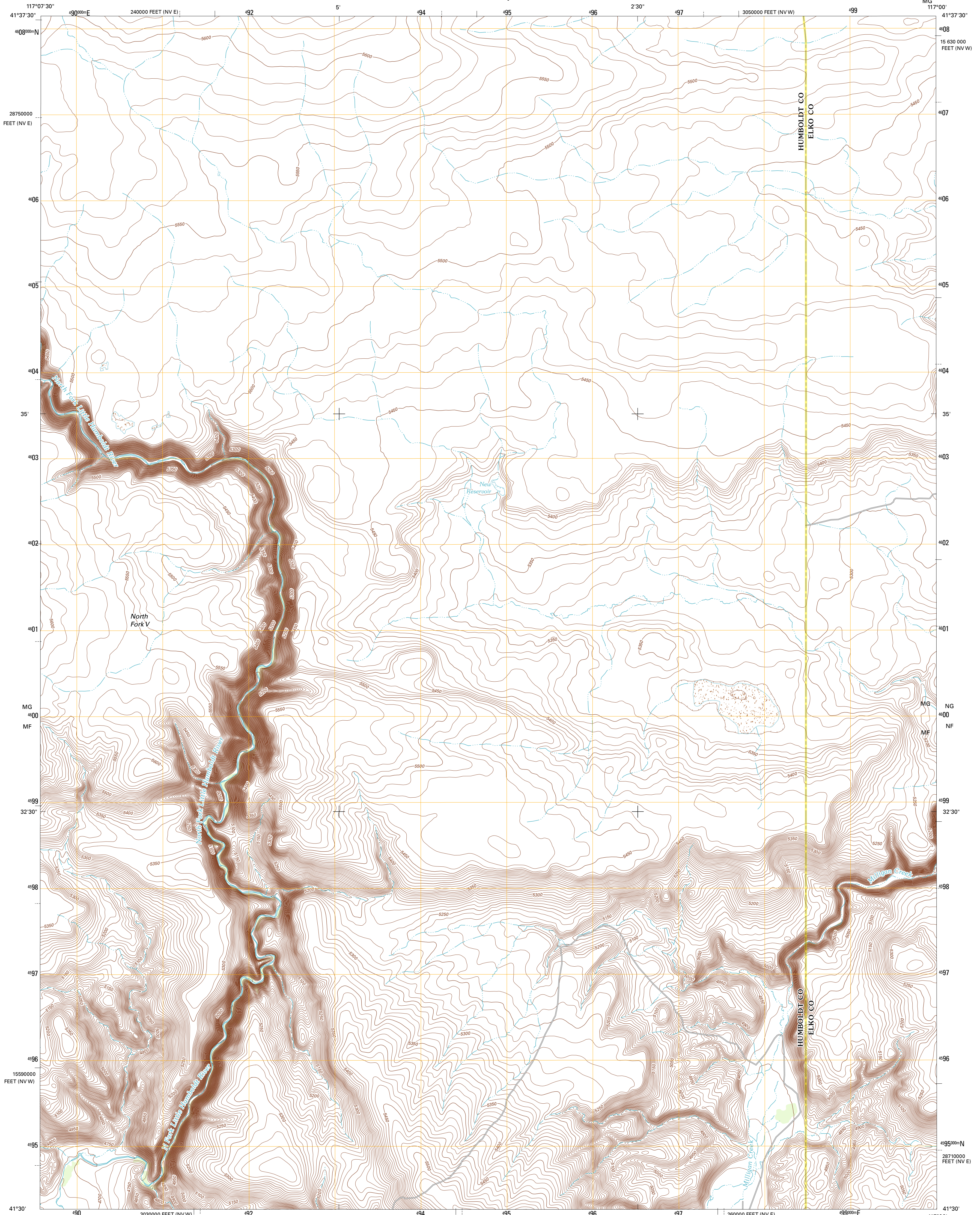




U.S. DEPARTMENT OF THE INTERIOR  
U. S. GEOLOGICAL SURVEY

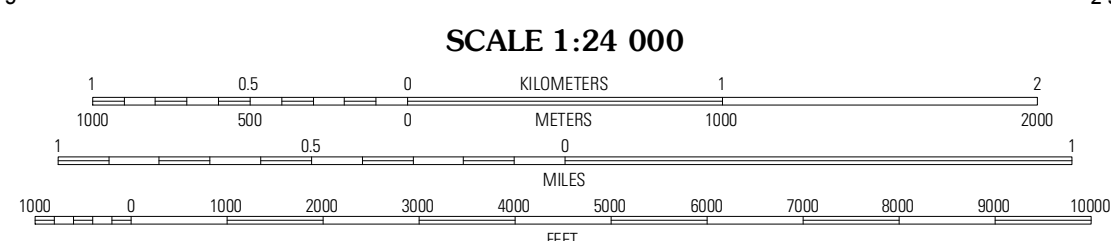
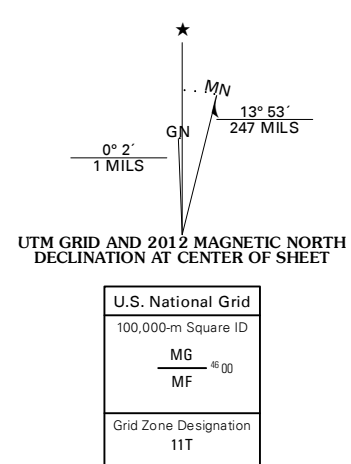


GREELEY FLAT SE QUADRANGLE  
NEVADA  
7.5-MINUTE SERIES



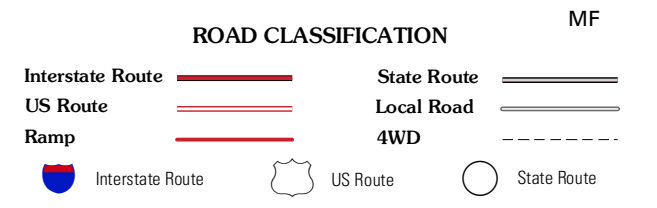
Produced by the United States Geological Survey  
North American Datum of 1983 (NAD83)  
World Geodetic System of 1984 (WGS84). Projection and  
1 000-meter grid: Universal Transverse Mercator, Zone 11T  
10 000-foot ticks: Nevada Coordinate System of 1983 (west  
and east zones)

Imagery.....NAIP, July 2010  
Roads.....©2006-2011 TomTom  
Names.....GNS, 2011  
Hydrography.....National Hydrography Dataset, 2010  
Contours.....National Elevation Dataset, 1999  
Boundaries.....Census, IBWC, IBC, USGS, 1972 - 2010



CONTOUR INTERVAL 10 FEET  
NORTH AMERICAN VERTICAL DATUM OF 1988

This map was produced to conform with the  
National Geospatial Program US Topo Product Standard, 2011.  
A metadata file associated with this product is draft version 0.6.1



QUADRANGLE LOCATION

Greeley Flat	Button Lake	Button Lake Well
Whiskey Springs	Greeley Flat SE	Humboldt Hill
Chimney Reservoir	Layton Spring	Rodent Flat

GREELEY FLAT SE, NV  
2012

ADJOINING 7.5 QUADRANGLES