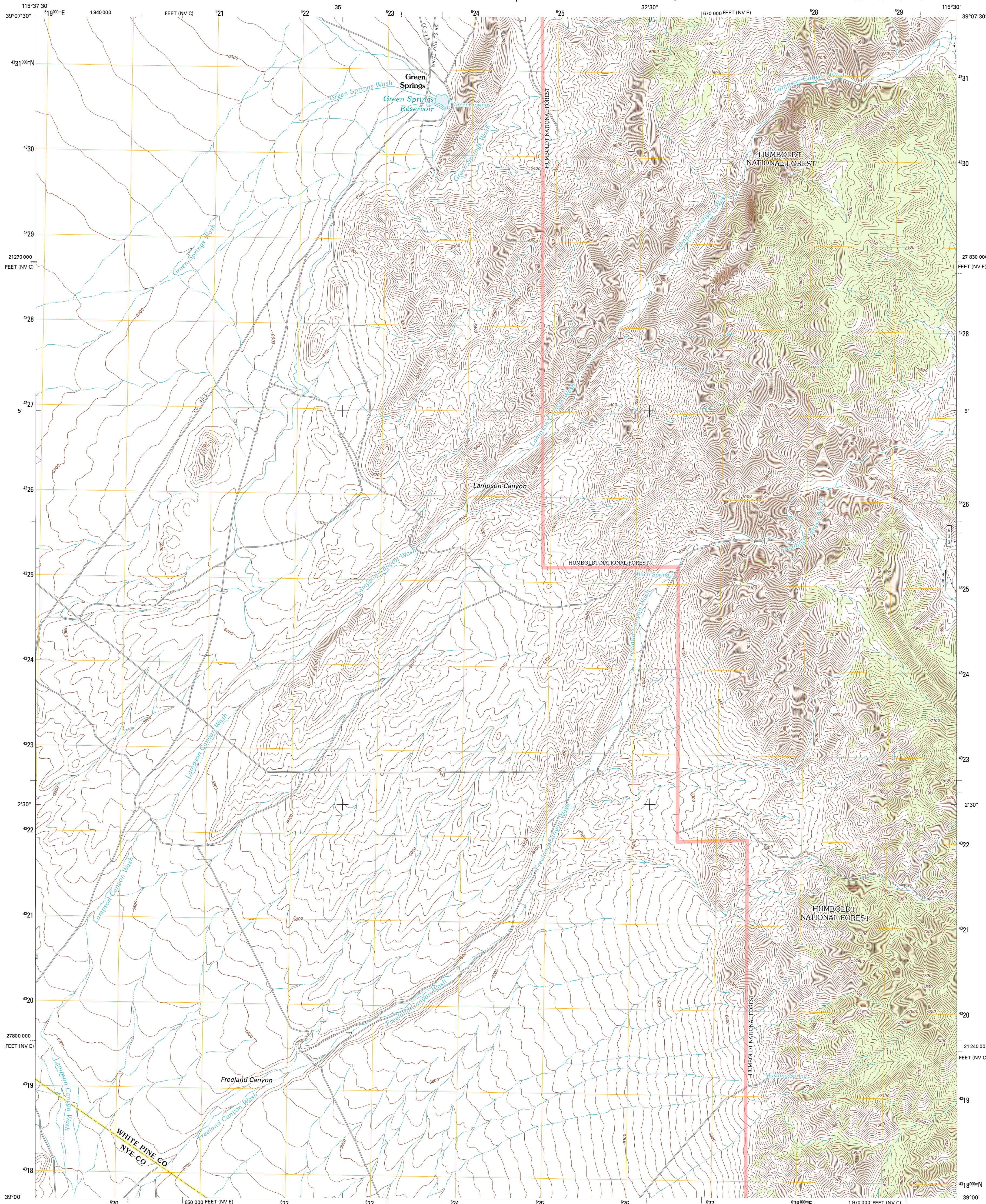




U.S. DEPARTMENT OF THE INTERIOR
U. S. GEOLOGICAL SURVEY

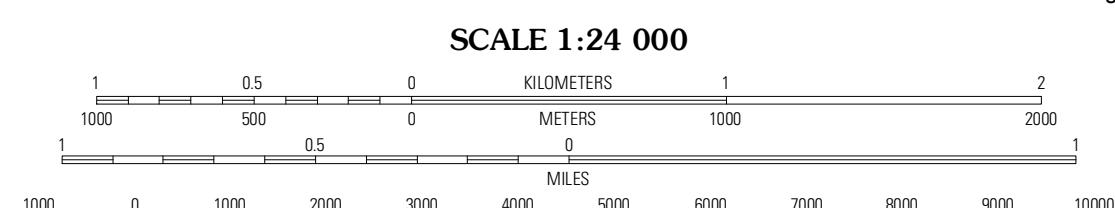
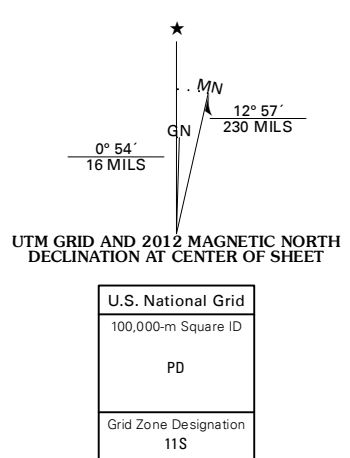


GREEN SPRINGS QUADRANGLE
NEVADA
7.5-MINUTE SERIES

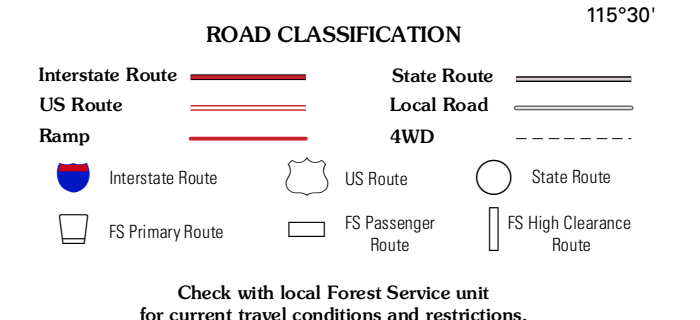
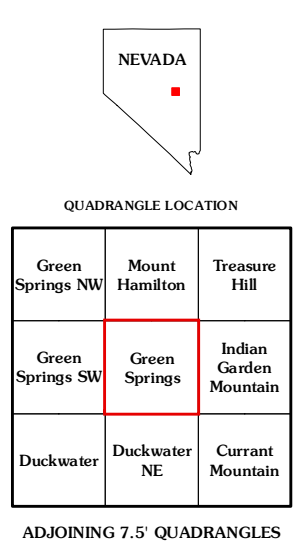


Produced by the United States Geological Survey
North American Datum of 1983 (NAD83)
World Geodetic System of 1984 (WGS84). Projection and
1 000-meter grid: Universal Transverse Mercator, Zone 11S
10 000-foot ticks: Nevada Coordinate System of 1983 (east
and central zones)

Imagery: N.A.P., June 2010
Roads: ©2006-2011 TomTom
Roads within US Forest Service Lands: FS Topo Data
with limited Forest Service updates, 2009
Names: GNIS, 2011
Hydrography: National Hydrography Dataset, 2010
Contours: National Elevation Dataset, 2004
Boundaries: Census, IBWC, IBC, USGS, 1972 - 2010



CONTOUR INTERVAL 20 FEET
NORTH AMERICAN VERTICAL DATUM OF 1988
This map was produced to conform with the
National Geospatial Program US Topo Product Standard, 2011.
A metadata file associated with this product is draft version 0.6.1



Check with local Forest Service unit
for current travel conditions and restrictions.

GREEN SPRINGS, NV
2012

ADJOINING 7.5' QUADRANGLES

Green Springs NW	Mount Hamilton	Treasure Hill
Green Springs SW	Green Springs	Indian Garden Mountain
Duckwater	Duckwater NE	Current Mountain